

# CalSAWS

California Statewide Automated Welfare System

## **Design Document**

CA-48513

Update EDBC Logic to Auto-Test for 4M when  
Youth 18 years or Older Exits Foster Care

CalSAWS	DOCUMENT APPROVAL HISTORY	
	Prepared By	Tisha Mutreja
	Reviewed By	Renee Gustafson, Derek Goering, Prashant Goel, Akira Moriguchi, Geetha Ramalingam, William Baretsky, Ritu China

DATE	DOCUMENT VERSION	REVISION DESCRIPTION	AUTHOR
10/19/2020	1.0	Initial Draft	Tisha Mutreja
12/07/2020	1.1	Draft post review comments from BAs	Tisha Mutreja
12/21/2020	1.2	Updated Draft on further confirmations from BAs	Tisha Mutreja
1/08/2021	1.3	Added Examples to recommendations	Tisha Mutreja
1/08/2021	1.4	Added Flow Chart to Supporting Documents	Tisha Mutreja
1/11/2021	1.5	Added Automated Task Creation	Tisha Mutreja
1/15/2021	1.6	Updated Auto-reassignment logic	Tisha Mutreja
1/19/2021	1.7	Updated task settings and flow charts	Renee Gustafson
1/22/2021	1.8	Automation section added	William Baretsky
1/26/2021	1.9	Household record update added to the criteria	Tisha Mutreja

## Table of Contents

1	Overview .....	4
	1.1 Current Design.....	4
	1.2 Requests.....	4
	1.3 Overview of Recommendations.....	4
	1.4 Assumptions .....	5
2	Recommendations.....	6
	2.1 Eligibility Rules Updates .....	6
	2.1.1 Overview .....	6
	2.1.2 Description of Changes .....	6
	2.1.3 Programs Impacted .....	9
	2.1.4 Performance Impacts .....	9
	2.2 Automated Task Creation .....	10
	2.2.1 Overview .....	10
	2.2.2 Description of Change.....	10
	2.2.3 Execution Frequency.....	11
	2.2.4 Key Scheduling Dependencies.....	11
	2.2.5 Counties Impacted .....	11
	2.2.6 Data Volume/Performance.....	11
	2.2.7 Failure Procedure/Operational Instructions.....	12
	2.3 Automated Regression Test.....	12
	2.3.1 Overview .....	12
	2.3.2 Description of Change.....	12
3	Supporting Documents .....	13
4	Requirements.....	13
	4.1 Project Requirements.....	13

# 1 OVERVIEW

---

This SCR is to streamline the process by updating EDBC logic to auto-test for 4M instead of 7J/38 when a youth 18 years or older exits from Foster Care (FC).

## 1.1 Current Design

Currently, when an individual is discontinued from FC, CalSAWS EDBC logic auto-tests the individual for Medi-Cal (MC). The auto-test logic opens a Medi-Cal program under the same FC case and grants Medi-Cal with a 7J or 38 aid code.

For Requested MC Type 'Former Foster Youth', Medi-Cal EDBC logic creates a budget named, "Former Foster Youth" with Member Role and aid code 4M when the FFY individual is the age of 18 through 26 years. The System generates a Notice of Action for change/approval to aid code 4M.

CalSAWS Medi-Cal EDBC logic sets the RE Due Date for a MC program with only a FFY individual to the month in which the individual turns 26; if there are any other individuals on the MC program, the RE Due Date is set to the last day of the month of 'Begin Date + 11 months' where Begin Date is the first day of the EDBC Benefit Month.

For Example: If a Medi-Cal application on 02/05/2021 has only an FFY individual (FFY individual turns 26 on 08/28/2023), the System sets the RE Due Month to 08/2023.

If there is another non-FFY individual on a separate MC program on the same case, the System sets the RE Due Month to 01/2022.

Current auto-test logic creates a new MC program block under the same FC case when an individual, age 18 or older, is discontinued from the FC program for any discontinuance status reason except 'Written Withdrawal inc. MC' and 'Requested Disc. - Written inc. MC'.

## 1.2 Requests

1. Streamline the process when youth 18 years or older exits Foster Care, by changing EDBC logic to auto-test for Former Foster Youth (4M) Medi-Cal to ensure uninterrupted Medi-Cal benefits.

## 1.3 Overview of Recommendations

1. Update EDBC logic to auto-test for Former Foster Youth (4M) Medi-Cal when an individual age 18 or above is discontinued from the FC program.
  - a. Create the new Medi-Cal program in a new case
2. For FC cases with another individual on an open MC program, create a task for the MC Worker in the FC case to inform that the FC individual is discontinued and moved to the newly created MC case.

## 1.4 Assumptions

1. The functionalities listed below related to individuals in Former Foster Youth Medi-Cal and individuals discontinued from Foster Care will be implemented with future SCR CA-220233. This SCR will follow regular prioritization process.
  - a. Update Medi-Cal EDBC logic to set the RE Due Date to the FFY individual's birthday month in the next year when the Medi-Cal program has only the FFY individual
  - b. Create a report to capture all Medi-Cal FFY (4M) cases with assigned workers
  - c. Automate the process to send out a Medi-Cal application 3 months prior to the end of coverage when auto-test results in an individual granted Medi-Cal with aid code 7J
  - d. Automate the process to send out a Medi-Cal application immediately when auto-test results in in an individual granted Medi-Cal with aid code 38
2. There are no changes to forms or NOAs as a result of this SCR.
3. There are no changes to how EDBC sets the Medi-Cal RE Due Date. It will follow current functionality.
4. The auto-test logic will not be suppressed if the physical address is out of state. The System will follow existing functionality to auto-test a Medi-Cal program and then discontinue the MC individual for 'Calif. Residence'.
5. The auto-test logic will copy over the mailing/physical address from the discontinued Foster Care case to the newly created Medi-Cal case.

## 2 RECOMMENDATIONS

---

### 2.1 Eligibility Rules Updates

#### 2.1.1 Overview

Update EDBC logic to auto-test for Former Foster Youth (4M) Medi-Cal when an individual age 18 or above is discontinued from the FC program.

#### 2.1.2 Description of Changes

1. Update EDBC auto-test logic to create a new Medi-Cal program when an individual, age 18 or older, is discontinued from the FC program for any discontinuance Status reason except the existing exception list of auto-test status reasons and the status reason of 'deceased' as follows:

- a. Create a new MC program in the FC case with the discontinued FC individual, age 18 or older.
  - i. Assign the FC worker to the MC program
  - ii. Set the Requested MC Type to 'Former Foster Youth' for the FFY individual
  - iii. Set the FFY individual as the primary applicant
  - iv. Set the Application Date for the MC program and program person(s) to the system date (calendar date)
  - v. Set the Beginning Date of Aid (BDA) to the first of the following month after the FFY individual is discontinued from FC

**Note:** The existing MC EDBC logic will grant the FFY individual the 4M aid code, 'Member' Role and a 'Former Foster Youth' budget.

For example: If the FFY individual was discontinued on FC case effective 02/2021 and auto-tested to the new MC case on 01/07/2021, the Medi-Cal Application Date will be set as 01/07/2021, and BDA as 02/01/2021.

- b. Create a separate MC program block with the Infant Supplement Payment (ISP) child(ren), if any, with below details:
  - i. Assign the FC worker to the MC program
  - ii. Set the Requested MC Type as 'Medi-Cal'
  - iii. Set the Application Date for the MC program and program person(s) to the system date (calendar date)
  - iv. Set the BDA to the first of the following month after the FFY individual is discontinued from FC
    1. Update EDBC logic for ISP child(ren) with parent FFY, to create a budget as 'Auto-test Medi-Cal' with Role as 'MEM' and aid code as '7J'

2. Update 'Save and Accept EDBC' logic to move the auto-tested FFY MC program and ISP MC program, if any, to a new MC case from the discontinued FC case as follows:
  - a. Create a new MC case with new case number:
    - i. Copy the FFY individual and ISP child(ren), if any, into the new MC case.
    - ii. Move the Active FFY MC program block and Active ISP MC program block, if any, from the discontinued FC case to the MC case.
    - iii. Set the MC program worker(s) to be assigned by the existing auto-reassignment logic. This end dates the FC worker assignment assigned to the MC program(s) in the FC case during auto-test.

In case the county opts-out of the auto-reassignment logic, the assignment stays with the existing FC worker. It will be the responsibility of the FC Worker to make sure the MC program is reassigned appropriately in order to allow for timely processing of the MC application.
    - iv. Do not copy the Foster Care program or the Foster Care Resource (from the Child Placement) from the discontinued FC case to the MC case.
    - v. Create a new household record for each individual as "In the Home" and set Begin Date as sysdate (calendar date).
3. Create a Journal Entry for MC cases created by auto-test logic stated in recommendation above.

The Journal Entry will be displayed as follows on Journal Detail page:

**Journal Category:** Activity

**Journal Type:** Eligibility

**Short Description:** MC Case created from FFY Discontinuance MC Auto-Test

**Long Description:** Case created by Medi-Cal Auto-Test when an individual, age 18 or older, was discontinued from the Foster Care program

Note: There will be one journal entry per case.

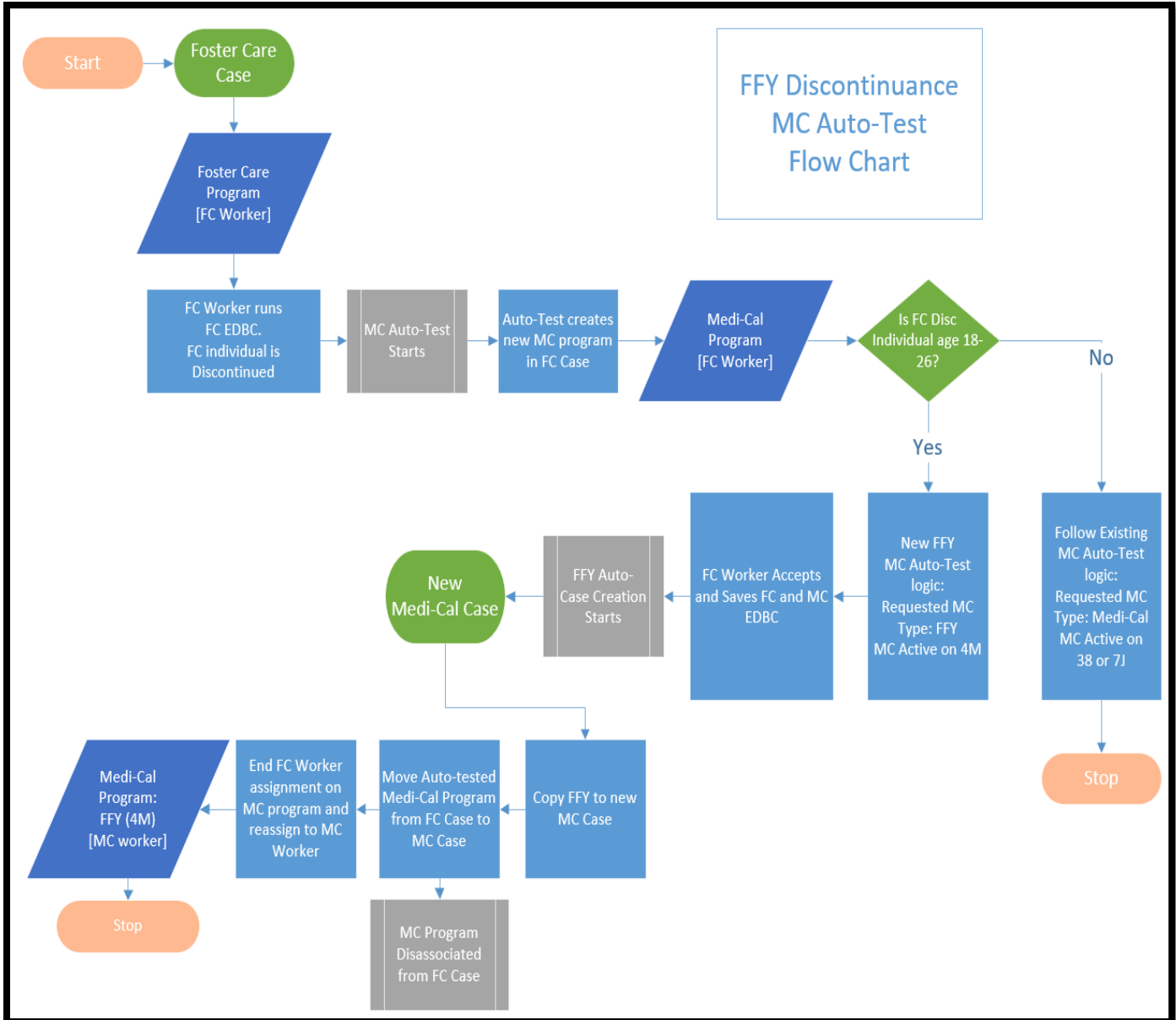


Figure 2.1 - Example Flow Chart for FFY Auto-Discontinuance



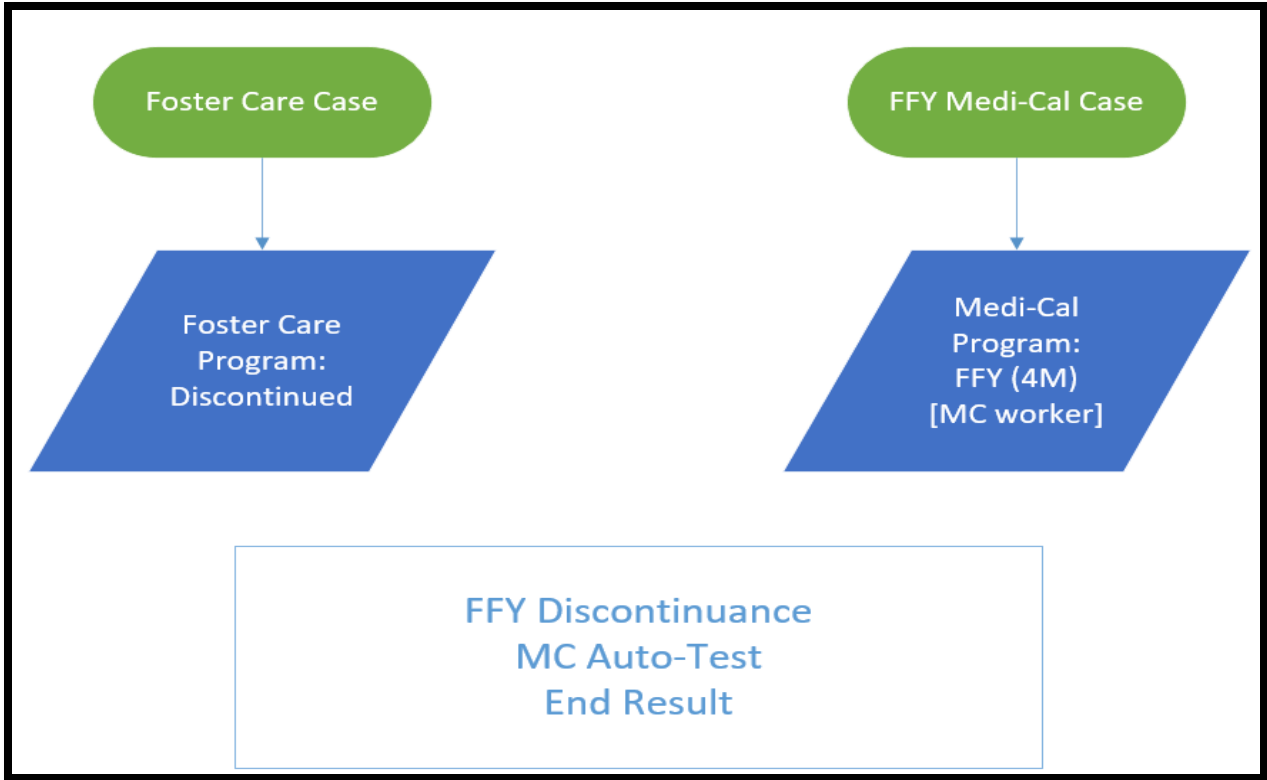


Figure 2.2 - End Result of FFY Auto-Discontinuance

NOTE: Additional flow charts are attached in Supporting Documents for reference.

**2.1.3 Programs Impacted**

Medi-Cal, Foster Care

**2.1.4 Performance Impacts**

N/A

## 2.2 Automated Task Creation

### 2.2.1 Overview

For FC cases with another individual on an open MC program, when the FFY individual is discontinued from the FC case and auto-tested into a new MC case, the existing MC programs are not copied over to the new MC case. Create a task for the MC Worker in the FC case to inform that the FC individual is discontinued and moved to the newly created MC case.

### 2.2.2 Description of Change

1. Add a Task Sweep job to create an automated task for the Medi-Cal worker on the open Medi-Cal program block from the discontinued Foster Care case.
2. Create an automated task with the following details:

Open MC program on Discontinued FC Case	
Trigger Condition	An open MC program block exists on the discontinued FC case mentioned in recommendation 2.1.2
Automated Action Name	Open MC program on Discontinued FC Case
Automated Action Scenario	An open MC program block exists on the discontinued FC case mentioned in recommendation 2.1.2
Automated Action Program	MC
Automated Action Source	Online EDBC
Automated Action Run Date	Real-time: online EDBC run date
Task Category	Case update
Task Type	Open MC program on Discontinued FC Case
Task Priority	Medium

<b>Open MC program on Discontinued FC Case</b>	
Task Due Date	10 business days
Expire Tasks	Yes
Expiration Period	90 days
Expiration Type	After Task is created
Task Long Description	The FC individual was discontinued and auto-tested to FFY on a separate Medi-Cal case. Review if the MC individual on this case should also move to the new Medi-Cal case.
Office Distribution	Yes
Task Initial Assignment	Case carrying worker.
Task Newly Assigned Indicator	5 days
Task Available Online	No
Task Navigation Template	Default – Case Summary page.

### **2.2.3 Execution Frequency**

Daily

### **2.2.4 Key Scheduling Dependencies**

None

### **2.2.5 Counties Impacted**

All counties

### **2.2.6 Data Volume/Performance**

Not Applicable

### **2.2.7 Failure Procedure/Operational Instructions**

Batch Support Operations staff will evaluate transmission errors and failures and determine the appropriate resolution (i.e., manually retrieving the file from the directory and contacting the external partner if there is an account or password issue, etc.)

## **2.3 Automated Regression Test**

### **2.3.1 Overview**

Update and enhance the existing automated regression test script(s) targeting Medi-Cal Former Foster Youth auto-test functionality to verify the movement of the Medi-Cal program to a separate case.

### **2.3.2 Description of Change**

Update the existing Medi-Cal Former Foster Youth script(s) to verify the new final result after EDBC is accepted and saved:

1. No Medi-Cal program is present on the Foster Care case
2. No Medi-Cal EDBC results are visible on the Foster Care case
3. The auto-tested Medi-Cal program is present on a new second case:
  - a. Requested Medi-Cal Type is "Former Foster Youth" for each applicant
  - b. Program status is "Active"
  - c. Person status is "Active" for each applicant
4. The auto-tested Medi-Cal EDBC result is visible on this second case:
  - a. Status is "Active"
  - b. Aid Code is "4M" for each applicant

### 3 SUPPORTING DOCUMENTS

Number	Functional Area	Description	Attachment
1	Eligibility Rules	Flow charts explaining the MC auto-test process from recommendation 2.1.2	 FFY Auto-Test.pdf

### 4 REQUIREMENTS

#### 4.1 Project Requirements

REQ #	REQUIREMENT TEXT	How Requirement Met
2.4.3.17	The LRS shall continue processing the application for any remaining programs if, at any point in time, the information collected results in ineligibility for one or more programs	Updated EDBC auto-test logic to create a new case with a Medi-Cal program when an individual, age 18 or older, is discontinued from the FC program