

# CalSAWS

California Statewide Automated Welfare System

## **Design Document**

SCR CA-215921 DDID 2315 FDS GA GR Phase 3 -  
Employment Services and EDBC changes

<b>CalSAWS</b>	<b>DOCUMENT APPROVAL HISTORY</b>	
	Prepared By	Peterson Etienne, Justis Ketcham, Stephanie Hugo, Shreesha Venugopal Math, Marqui Simmons
	Reviewed By	

DATE	DOCUMENT VERSION	REVISION DESCRIPTION	AUTHOR
1/17/2022	1.0	Initial Draft	Peterson Etienne, Justis Ketcham, Stephanie Hugo, Shreesha Venugopal Math, Marqui Simmons
1/19/2022	1.1	Updated based on QA comments	Peterson Etienne, Justis Ketcham, Ramakrishna Kuchibhotla, Shreesha Venugopal Math
1/19/2022	1.2	Added Status reason 'ES Non-compliance – 6 month sanction', 'Age is over 59' and removed the status reason 'Failed to comply as an applicant' for Common routine sanction functionality	Peterson Etienne, Ramakrishna Kuchibhotla
1/20/2022	1.3	Added Assumption that logic related to non-cooperation mandatory program requirement cannot be tested in this SCR.	Peterson Etienne



## Table of Contents

1	Overview .....	7
1.1	Current Design.....	7
1.2	Requests .....	7
1.3	Overview of Recommendations .....	7
1.4	Assumptions .....	7
2	Recommendations .....	8
2.1	GA/GR Sanction List.....	8
2.1.1	Overview.....	8
2.1.2	GA/GR Sanction List Mockup .....	9
2.1.3	Description of Changes .....	9
2.1.4	Page Location .....	10
2.1.5	Security Updates .....	10
2.1.6	Page Mapping .....	11
2.1.7	Page Usage/Data Volume Impacts .....	11
2.2	GA/GR Sanction Detail .....	11
2.2.1	Overview.....	11
2.2.2	GA/GR Sanction Detail Mockup .....	11
2.2.3	Description of Changes .....	12
2.2.4	Page Location .....	15
2.2.5	Security Updates .....	15
2.2.6	Page Mapping .....	15
2.2.7	Page Usage/Data Volume Impacts .....	<b>Error! Bookmark not defined.</b>
2.3	GA/GR Employment Services Status Detail .....	15
2.3.1	Overview.....	15
2.3.2	GA/GR Employment Services Status Detail Mockup.....	16
2.3.3	Description of Changes .....	17
2.3.4	Page Location .....	20
2.3.5	Security Updates .....	21
2.3.6	Page Mapping .....	21
2.3.7	Page Usage/Data Volume Impacts .....	21

2.4	Non-Compliance And Sanction Summary .....	25
2.4.1	Overview.....	25
2.4.2	Non-Compliance And Sanction Summary Page Mockup.....	25
2.4.3	Description of Changes .....	26
2.4.4	Page Location .....	27
2.4.5	Security Updates .....	27
2.4.6	Page Mapping .....	28
2.4.7	Page Usage/Data Volume Impacts .....	28
2.5	Sanction Type Detail Page .....	28
2.5.1	Overview.....	28
2.5.2	Sanction Type Detail Mockup .....	29
2.5.3	Description of Changes .....	29
2.5.4	Page Location .....	31
2.5.5	Security Updates .....	31
2.5.6	Page Mapping .....	31
2.5.7	Page Usage/Data Volume Impacts .....	31
2.6	Eligibility Employment Services Functionality .....	32
2.6.1	Eligibility Changes .....	32
2.6.2	Logic Overview - Auto creation of GA/GR Employment Services Program 34	
2.6.3	Sanction Functionality .....	37
2.7	Employable Status Functionality.....	60
2.7.1	County Admin Detail.....	60
2.8	Batch – Create New Sanction Type Detail Batch .....	80
2.8.1	Overview.....	80
2.8.2	Description of Change .....	80
2.8.3	Execution Frequency.....	81
2.8.4	Key Scheduling Dependencies.....	81
2.8.5	Counties Impacted.....	81
2.8.6	Failure Procedure/Operational Instructions.....	81
3	Requirement.....	82
3.1	Migration Requirements .....	82
4	Migration Impacts .....	87

5 Appendix.....87  
5.1 Rules Flow Diagram .....87  
5.2 Reference Table .....91

## 1 OVERVIEW

---

This SCR will implement the Eligibility functionality of the Employment Services program solution and the Non-financial functionality for the GA/GR Automated EDBC/CC Counties Solution in CalSAWS.

### 1.1 Current Design

The GA/GR Automated EDBC/CC Counties Solution in the CalSAWS system is designed to automate the rules for the Los Angeles county's implementation as well as the automation and monitoring of their General Relief Opportunities for Work (GROW) program. Currently CalWIN manages their GA/GR program logic by using a Rule Matrix which can be accessed by the county to allow each county administrator to customize the behavior to their specific county.

### 1.2 Requests

A GA/GR Automated EDBC/CC Counties Solution and the new Employment Services program will be developed in CalSAWS to automate the rules and administer the program for the 18 CalWIN counties. This solution will provide the framework for the remaining 39 C-IV counties to opt into this solution in the future. This change request will automate the non-financial functionality for the new solution.

### 1.3 Overview of Recommendations

1. Add Eligibility functionality for Employment Services and creating sanctions.
2. Add all the required Data Collection elements to implement the Employment Services and sanction functionalities for the new solution
3. Create new Admin Summary and Detail pages that can be accessed in Admin tools by the County Admin staff
4. A new set of Admin detail pages, Rules, Batch and NOA triggers will be added for the below Non-Financial rules.

1. Employable Status

### 1.4 Assumptions

1. The existing Los Angeles county rules will remain unchanged.
2. This SCR CA-215921 is based on the WCDS approved documents.
3. The design of the rules is for each CalWIN county based on the Gainwell documents approved by the counties.
4. The functionality of this SCR CA-215921 will be disabled until activated by the system property flag established in SCR CA-215687 which is part of the 20.11 release.

5. Any logic related to San Francisco explicitly called out in relevant WCDS approved use cases will be included in this design. Any, San Francisco sub program logic independent of the rule will be added in SCR CA-215677 DDID 2374 scheduled for 22.01.
6. Alerts will be handled separately outside the Rules design in a separate SCR CA-220119.
7. All functionality related to new fields will only affect the rules related to an individual county's General Assistance/General Relief program and will not impact the rules of other programs, unless specified.
8. All Data collection used in EDBC determination is effective for the benefit month.
9. All calculation for computed values will be detailed in the Visio diagram.
10. 'Participation status' will be an internal flag in CalSAWS, when a participation status is set in the rule it will replace the previous set status for each individual.
11. Manual EDBC and negative action EDBC cannot be run with these changes.
12. Changes related to Time Clock functionality cannot be tested with this SCR as the time clock changes will be implemented with CA-215680 scheduled for 22.05 release.
13. User can reset the sanction instance number.
14. Sanctions will be carried along with person within the county but not across counties. So, sanctions created in one county are not available in another county.
15. The program description 'General Assistance/General Relief (GR)' represents 'GA/GR Automated EDBC/CC Counties Solution'.
16. Any logic related to non-cooperation/non-mandatory program requirement functionality cannot be tested until CA- 226620 scheduled for 22.05 release.

## 2 RECOMMENDATIONS

---

### 2.1 GA/GR Sanction List

#### 2.1.1 Overview

GA/GR Sanction List page displays all the sanction records created for the given case. The sanction records are created on a person level. The person on a different case, but within the same county will be able to see the records.



## 2.1.2 GA/GR Sanction List Mockup

### GA/GR Sanction List

\* - Indicates required fields

Search Results Summary
Results 1 - 2 of 2

Display From:

To:

View

	Name	Type	Reason	Begin Date	End Date	
<input type="checkbox"/>	<a href="#">math. shreesacramento 28M</a>	Timely report/Cal-Learn Child Progress Inadequate	Member of the Economic Unit falsified evidence about the responsible relative/alien sponsor's income	01/01/2022	01/31/2022	<p>Edit</p> <p>View History</p>
<input type="checkbox"/>	<a href="#">math. shreesacramento 28M</a>	Timely report/Cal-Learn Child Progress Inadequate	Member of the Economic Unit falsified evidence about the responsible relative/alien sponsor's income	12/01/2021	12/31/2021	<p>Edit</p> <p>View History</p>

Remove

Figure 2.1.2.1 – GA/GR Sanction List Mockup

## 2.1.3 Description of Changes

1. "GA/GR Sanction" link appears at the last under "GA/GR" Task Navigation. On click of this link user will navigate to "GA/GR Sanction List" page. The link is only visible if the user has "GAGRSanctionListView" right.
2. Display From: This field will be the limit for the earliest date that the displayed records will be available.
3. To: This field will be the upper limit for when a record ended.
4. View: This button will reload the search results based on the dates provided.
5. Add: if the user has the "GAGRSanctionDetailEdit" right, the Add button will display and take the user to the "GA/GR Sanction Detail" page in create mode.
6. Checkbox: The checkboxes will only display when the user has the "GAGRSanctionDetailRemove" right.
7. Name: This will display the name of the individual the record is applicable for. If the user has the "GAGRSanctionDetailView" right, the name will display as a hyperlink that will take the user to the "GA/GR Sanction Detail" page in view mode.
8. Type: The Type of the GA/GR Sanction record created.
9. Reason: The Reason for the GA/GR Sanction record created.
10. Begin Date: The begin Date of the GA/GR Sanction record.

11. End Date: The end Date of the GA/GR Sanction record.
12. Edit: if the user has the "GAGRSanctionDetailEdit" right, the edit button will display and take the user to the "GA/GR Sanction Detail" page in edit mode.
13. View History: This button will take the user to the Transaction History Detail for the associated record. This button will only display when the user has the "GAGRSanctionDetailView" right.
14. Remove: This button will delete the records with the checkboxes selected. This button will only display when the user has the "GAGRSanctionDetailRemove" right.

Note: Sanction record for a person belonging to same county(county where the sanction record got created) will be visible on a GA/GR Sanction List on the other case if the person moves to other case within the same county.

#### 2.1.4 Page Location

- **Global: Eligibility**
- **Local: Customer Information**
- **Task: GA/GR -> GA/GR Sanction**

#### 2.1.5 Security Updates

##### 1. Security Rights

Security Right	Right Description	Right to Group Mapping
GAGRSanctionView	GA/GR Sanction View	GA/GR Sanction View, GA/GR Sanction Edit
GAGRSanctionEdit	GA/GR Sanction Edit	GA/GR Sanction Edit
GAGRSanctionRemove	GA/GR Sanction Remove	GA/GR Sanction Remove
GAGRSanctionListView	GA/GR Sanction List View	GA/GR Sanction List View

## 2. Security Groups

Security Group	Group Description	Group to Role Mapping
GA/GR Sanction View	This group has the capability to view GA/GR Sanction records.	See the Security Matrix for the group to role associations
GA/GR Sanction Edit	This group has the capability to create and modify GA/GR Sanction records.	See the Security Matrix for the group to role associations
GA/GR Sanction Remove	This group has the capability to remove GA/GR Sanction records.	See the Security Matrix for the group to role associations
GA/GR Sanction List View	This group has the capability to view GA/GR Sanction records on the list page.	See the Security Matrix for the group to role associations

### 2.1.6 Page Mapping

Add page mapping for the new fields for this page.

### 2.1.7 Page Usage/Data Volume Impacts

[Where applicable, evaluate the projected page usage and data volume that will be created from all counties using this page.]

## 2.2 GA/GR Sanction Detail

### 2.2.1 Overview

GA/GR Sanction Detail page is used to create sanction records for any of the applicable General Assistance/General Relief, General Assistance (Managed), General Assistance (Non-Managed), GA/GR Automated Solution programs.

### 2.2.2 GA/GR Sanction Detail Mockup

**GA/GR Sanction Detail**

\*- Indicates required fields

Save and Return Cancel

Name: \* Created By: User  
john\_helson 28M

Type: \*  
Timely report/Cal-Learn Child Progress Inadequate

Reason:  
Member of the Economic Unit falsified evidence about the responsible relative/alien sponsor's income

Instance: 1 County: San Luis Obispo

Begin Date: \* 12/01/2021 End Date: 12/31/2021 End Reason: County Determined Good Cause

Save and Return Cancel

Figure 2.2.2.1 – GA/GR Sanction Detail Mockup (Create Mode)

### 2.2.3 Description of Changes

1. Name: Name of the Participant. This dropdown will have a list of all case members having General Assistance/General Relief, General Assistance (Managed), General Assistance (Non-Managed), GA/GR Automated Solution programs. This dropdown will default to "-Select- ". This field will be required. This field will only be editable in create mode.
2. Created By: It is a non-editable field. When EDBC creates the record, the value will be "System" and when User creates the record the value will be "User".
3. Type: The dropdown containing sanction Types. This field will be required. This field will only be editable in create mode. The types listed under Sanction section on the page Non-Compliance And Sanction Summary and having Activated Indicator as 'Y' for the current date, will be displayed under Type dropdown.
4. Reason: The dropdown containing sanction Reasons. This field will only be editable in create mode. Below is the list of sanction reason:
  - a. Application is denied because client provided fraudulent information
  - b. Applied for and/or received GR using a false identity and/or SSN.
  - c. Cashing duplicate warrant.
  - d. Committed an act of violence or vandalism in a Social Services office or related location

**Commented [PE1]:** Lien Comment:

Does the General Assistance/General Relief include LA GR program on the GA/GR Sanction?

- e. Convicted of welfare fraud
  - f. Currently under a fraud sanction from receiving GA
  - g. Did not provide proof of current status of SSI/SSP application.
  - h. Failed to coop with an SIU investigation, incl failure to keep appointment(s) with an investigator
  - i. Failed to report and/or apply for all persons in the GR AU.
  - j. Failed to report anticipated income.
  - k. Failed to report application for or receipt of income.
  - l. Failed to report ownership of property.
  - m. Fails to report all facts.
  - n. Falsified evidence or info- resp relative/alien sponsor's inc, prop, willingness to provide support
  - o. Falsified evidence or information about the residence of the GR AU
  - p. Falsified incapacity documentation.
  - q. Gives the county fraudulent documents or did not give the county complete information
  - r. Knowingly accepted or negotiated GR benefits to which the GR AU is not entitled
  - s. Member of Economic Unit falsified evidence about response. Relative/ sponsor's willingness to support
  - t. Member of Economic Unit falsified evidence about the responsible relative/alien sponsor's property.
  - u. Member of Economic Unit falsified info about the response relative sponsor's willingness to support
  - v. Member of Economic Unit falsified info about the responsible relative/alien sponsor's property.
  - w. Member of the Economic Unit falsified evidence about the responsible relative/alien sponsor's income
  - x. Member of the Economic Unit falsified info about the responsible relative/alien sponsor's income.
  - y. Misrepresented info provided on the GR application and/or Statement of Facts
  - z. Previously committed fraud.
  - aa. Provided apparent fraudulent documents.
  - bb. Receiving a lump sum.
  - cc. Reports a false place of residence.
  - dd. Serving a fraud sanction
  - ee. Serving a previous sanction.
  - ff. Simultaneously applied for and/or received GR in two or more jurisdictions
5. Instance: This is the dropdown field containing instance values from 1 to 5. It is not a required field. The field is editable in both create and edit mode.
6. County: The drop-down containing list of counties. The field is editable in both create and edit mode.

**Commented [PE2]:** Lien Comment:

Should we change to 5 or more to match with Admin page?

7. Begin Date: The Date field. This field will be required. The field is editable in both create and edit mode.
8. End Date: The Date field. The field is editable in both create and edit mode.
9. End Reason: The drop-down field containing End reason. The field is editable in both create and edit mode. The Dropdown contains following values:
  - a. Admin Hearing Reversal
  - b. Allowable Negligent Act
  - c. County Determined Good Cause
  - d. Custodial Parent Sanction
  - e. End of Sanction Period
  - f. Exemption
  - g. Not Eligible to CalWORKs
  - h. Participant is Complying
  - i. Sanction Cured
  - j. Sanction Lifted
  - k. Sanction Sent in Error
  - l. Sanction Suspended
  - m. SSI Recipient
  - n. State Hearing Reversal
10. Save and Return: This button will only appear in Create and Edit Modes. This button will save the record to the database and return the user to the GA/GR Sanction List page. Records will be effective dated based on the participant and type.
11. Edit: This button will appear in View Mode if the user has the "GAGRSanctionDetailEdit" right. This button will reload the page in Edit mode for the given record.
12. Cancel: This button will only appear in Create and Edit Modes. This button will discard all changes and return the user to the GA/GR Sanction List page.
13. Close: This button will only appear in View Modes. This button will return the user to the GA/GR Sanction List page.
14. On click of 'Save and Return' please trigger the below validations if applicable:
  - (a) Trigger the validation error message, 'End Date must be after Begin Date.' For the End Date field if the End Date is before Begin Date.
  - (b) Trigger the validation error message, 'The selected Type is not active for the selected Begin Date and End Date. Please adjust Begin Date or End Date.' If the type is not activated for the selected begin date and end date (User can check the status of Types in Sanction Detail page).

**Commented [PE3]:** Lien Comment:

Need to add field validation for Begin and End date.

Note: As the technical changes, one should persist the logged in county while saving the details. And if the person belongs to the same county but moves to other case then in the other case under GA/GR Sanction List page one can see the record of the person who moved to different case within the same county.

### 2.2.4 Page Location

- **Global: Eligibility**
- **Local: Customer Information**
- **Task: GA/GR -> GA/GR Sanction**

### 2.2.5 Security Updates

#### 3. Security Rights

Security Right	Right Description	Right to Group Mapping
GAGRSanctionView	GA/GR Sanction View	GA/GR Sanction View, GA/GR Sanction Edit
GAGRSanctionEdit	GA/GR Sanction Edit	GA/GR Sanction Edit

#### 4. Security Groups

Security Group	Group Description	Group to Role Mapping
GA/GR Sanction View	This group has the capability to view GA/GR Sanction records.	See the Security Matrix for the group to role associations
GA/GR Sanction Edit	This group has the capability to create and modify GA/GR Sanction records.	See the Security Matrix for the group to role associations

### 2.2.6 Page Mapping

Add page mapping for the new fields for this page.

## 2.3 GA/GR Employment Services Status Detail

### 2.3.1 Overview

The "GA/GR Employment Services Status Detail" page is used to display or create detailed information regarding a program status.

### 2.3.2 GA/GR Employment Services Status Detail Mockup

**GA/GR Employment Services Status Detail**

\* - Indicates required fields Close

<b>Status: *</b> Active	<b>Status Reason: *</b> Conversion
<b>Begin Date: *</b> 11/04/2019	<b>End Date:</b> 07/31/2021

Close

Figure 2.3.2.1 – GA/GR Employment Services Status Detail – (View)

**GA/GR Employment Services Status Detail**

\* - Indicates required fields Save and Return Cancel

<b>Status: *</b> Active	<b>Status Reason: *</b> Participating
<b>Begin Date: *</b> 03/01/2021	<b>End Date:</b> 

Save and Return

Cancel

Figure 2.3.2.2 – GA/GR Employment Services Status Detail – (Create)



**GA/GR Employment Services Status Detail**

\*- Indicates required fields

Save and Return Cancel

Status: \*  
 Deregistered ▼

Begin Date: \*      End Date:

Save and Return Cancel

**Figure 2.3.2.3 – GA/GR Employment Services Status Detail – (Create)  
 (Status is Deregistered)**

**2.3.3 Description of Changes**

1. When the Status in GA/GR Employment Services Status Detail page is 'Deregistered' then 'Status Reason' drop down will not be shown in the screen to capture the status reason.
2. Update the Status Reason dropdown for Status Sanction and Non-Comp with the following status reasons and that these status reasons only available for GA/GR Employment Services program.
  - a. Status Sanction

Status Reason	
Attending a school or training program	Failing to attend a scheduled comprehensive assessment meeting
Client fails to cooperate with Employment Services (Job Club) and is sanctioned for a period	Fails to attend a case management appointment
Client not followed rules he/she has failed to cooperate with job search sanctioned for a period	Fails to attend a Substance Abuse Counselor appointment
Client provided fraudulent info about job search to qualify for a grant and sanction for 6 months	Fails to meet requirement to participate in the training or ESL component of the GATE program
Client submitted a job search form Dept is unable to verify job search contacts Sanction for 6 months	Fails to register with the Work Program without good cause.

Cond Employable-fails without good cause to report to the GR Work Program Employment Specialist	Fails to report the GRWP Coordinator/Employment Specialist without good cause
Conditionally Employable fails without good cause to register with the GR Work Program	Fails to report to an assigned work site without good cause
Conditionally Employable-fails without good cause to report to an assigned job site	Failure to Comply with Work Project Requirements
Conditionally Employable-fails without good cause to report to an assigned training	Failure to Co-operate with GAADDS 1st Time
Conditionally Employable-fails without good cause to complete a required job search report	Failure to Co-operate with GAADDS 2nd Time
Did not accept a referral to a formal training program	Failure to Co-operate with GAADDS 3rd Time
Did not attend your job preparation class(es)	Failure to cooperate with GR employable program requirement
Did Not Complete 24 Hour Work Test	Failure to provide verification of incapacity (disability)
Did not complete job search	Failure to Provide Verification that they Complied
Did Not Complete Job Training	Failure/Refusal to Comply with Work Referrals
Did not complete required tests/exam available at no cost	Harassing co-workers
Did not go to job interview	Ineligible: Failure to comply with work project requirements
Did not keep an appointment for an employability assessment at Vocational Services	Ineligible: Client failed to verify ongoing presence in the City/County of San Francisco
Did not report to a job as instructed	Ineligible: Client failed verify ongoing presence in the City/County of San Francisco
Did not report to training as expected	Ineligible: Essential information for verification being unacceptable
Disrespectful/insubordinate of supervision	Ineligible: Failed to attend GEP
Disruptive during class/assignment.	Ineligible: Failed to attend IGEP
Documents/information that seem to be false, and it violates the work program requirements	Ineligible: Failed to carry out treatment program

Failed to accept a job offer without good cause.	Ineligible: Failed to keep appointment for referral for evaluation for a work assignment/job search
Failed to appear for an interview with Sbs Abs Cnslr	Ineligible: Non-participation in required program
Failed to appear for Employability Assessment	Ineligible: SF PAES client failed for missing GEP first session
Failed to attend CAM/Return Questionnaire/Medical History	Left the work site without good cause prior to completing the assigned hours
Failed to attend CAM/Return Questionnaire/Medical History AND in AIK	Missing their appointment with the Special Medical worker
Failed to attend the work program orientation	Missing their medical appointment
Failed to complete address for employers on Job Search form.	Negligent failure to complete assigned hours on the work project - missed scheduled orientation
Failed to complete the Work Program Assigned activity	Negligent failure to complete work search satisfactorily because work search form not received
Failed to comply with GA Regulations AND in AIK	Negligent failure to properly complete assigned hours on the work project because of absence(s)
Failed to cooperate with Early Fraud Detctn & Prvnt	Negligent failure to properly complete assigned hours on the work project on three different dates
Failed to cooperate with SET Refugee Program AND Not in AIK	Non-cooperation for a non-specified reason
Failed to cooperate with SETA Refugee Program AND in AIK	Not available for full time employment or is employed full-time
Failed to cooperate with VRS/EDD	Not Available for Work without Good Cause
Failed to file application	Not Coop with Vocational
Failed to keep a scheduled appointment with the MRT	Not cooperating with SETA refugee program
Failed to keep an employability determination appointment at VHC	Observed in the act of theft/vandalism

Failed to keep appointment	Refused to accept and keep employment at minimum wage
Failed to keep appointment with DCM	Refused to complete any/all forms.
Failed to keep SSI advocacy assessment appointment	Refused to complete/participate in any or all exercises during the assignments
Failed to keep your appointment with vocational rehabilitation services	Santa Clara GA client is in school and is not, therefore available for work
Failed to participate in a required program of rehabilitation	Training assignment ended because of misconduct
Failed to participate in GATE/ESL Training AND in AIK	Turned in a Job Search form with the wrong month
Failed to participate in the Emp/Training Component of GATE and resides in AIK Facility	Under the apparent influence of alcohol/drugs
Failed to present proof of current EDD work registration	Unsatisfactory work performance without good cause
Failed to provide a Job Search form	Violent or threatening violence on the premises of vrs
Failed to provide Job Search form by 5th of the month	When client is enrolled or expects to be enroll in school and cannot accept full time job
Failed to provide verification	Willfully damaged work materials/property
	Work project assignment ended because of misconduct

b. Non-Comp

Status Reason
Failed to present proof of current EDD work
Did not accept a referral to a formal training program
Did not attend your job preparation class(es)
Did not go to job interview
Other

**2.3.4 Page Location**

- **Global:** Empl. Services
- **Local:** Case Summary

- **Task:** GA/GR Employment Services

### **2.3.5 Security Updates**

No security updates.

### **2.3.6 Page Mapping**

Add page mapping for the new fields for this page.

### **2.3.7 Page Usage/Data Volume Impacts**

No page usage or data volume impacts.

## 2.4 GA/GR Employment Services Detail

### 2.4.1 Overview

The "GA/GR Employment Services Detail" page is used to display program related information.

### 2.4.2 GA/GR Employment Services Status Detail Mockup

#### GA/GR Employment Services Detail

\* - Indicates required fields

[View History](#) [Save and Return](#) [Cancel](#)

Date: \*  
02/01/2022 [View Date](#)

**Program Information**

Status: *	Status Reason:	Source: *
Pending		Other

Program Begins on: \*  
01/01/2022

Automatically Reassign When Activated:  
No

**Administrative Roles**

Name	Administrative Role	Begin Date	End Date	Use Between Payees
math, shreesacramentothree 29M	Primary Applicant/Recipient	01/01/2022		<a href="#">Edit</a>
math, shreesacramentothree 29M	Payee	01/01/2022		<a href="#">Edit</a>

[Add](#)

**Program Persons**

Name	Role	Role Reason	Status	Status Reason
<a href="#">math, shreesacramentothree 29M</a>	MEM		Pending	

**Secondary Assignment**

Worker  
[Select](#)

[View History](#) [Save and Return](#) [Cancel](#)

Figure 2.3.2.1 – GA/GR Employment Services Detail – (Edit)

### GA/GR Employment Services Detail

\*- Indicates required fields

[View History](#) [Issuance Method](#) [Edit](#) [Close](#)

**Date: \***  
02/01/2022

**Program Information**

<b>Status: *</b> Pending	<b>Status Reason:</b>	<b>Source: *</b> Other
<b>Program Begins on: *</b> 01/01/2022		
<b>Automatically Reassign When Activated:</b> No		

**Administrative Roles**

Name	Administrative Role	Begin Date	End Date	Use Between Payees
math, shreesacramentothree 29M	Primary Applicant/Recipient	01/01/2022		
math, shreesacramentothree 29M	Payee	01/01/2022		

**Program Persons**

Name	Role	Role Reason	Status	Status Reason
<a href="#">math, shreesacramentothree 29M</a>	MEM		Pending	

**Secondary Assignment**

Worker

[View History](#) [Issuance Method](#) [Edit](#) [Close](#)

**Figure 2.3.2.2 – GA/GR Employment Services Detail – (View)**

### 2.4.3 Description of Changes

1. Do not display Edit and Add button under Program Person Section.
2. Update CT18 for GA/GR Employment Services (GE) program and set refer\_table\_25\_descr (Is Application Considered) to 'N'.
3. Rename 'Application Date' to 'Program Begins on'.

Note: The GA/GR Employment Services Program was added initially under the SCR CA-215644.

#### 2.4.4 Page Location

- **Global:** Case Info
- **Local:** Case Summary
- **Task:** Case Summary -> GA/GR Employment Services ->View Details



## 2.5 Non-Compliance And Sanction Summary

### 2.5.1 Overview

The Non-Compliance and Sanction Summary page will provide the user a list of Non-Compliance and Sanction Types. The functionalities will lead the user to detail page in which they can view the individual types.

### 2.5.2 Non-Compliance And Sanction Summary Page Mockup

**Non-Compliance And Sanction Summary**

County: Sacramento

**Non-Compliance**

**Sanction**

<a href="#">Age Exempt Fraud</a>	Edit
<a href="#">Aid Received More Than Time Limit</a>	Edit
<a href="#">Audit</a>	Edit
<a href="#">CALM Fraud</a>	Edit
<a href="#">Cessation of Expense</a>	Edit
<a href="#">Date of Strike</a>	Edit
<a href="#">Failed work project</a>	Edit
<a href="#">Failure to complete Quarterly Reporting</a>	Edit
<a href="#">Fleeing Felon/GA</a>	Edit
<a href="#">GA Fraud</a>	Edit
<a href="#">GAADS</a>	Edit
<a href="#">Housing Expense</a>	Edit
<a href="#">IPV</a>	Edit
<a href="#">Job Refusal</a>	Edit
<a href="#">Job Refusal - PAES</a>	Edit
<a href="#">Job Search</a>	Edit
<a href="#">Job Termination</a>	Edit
<a href="#">Lump Sum POI</a>	Edit
<a href="#">Lump Sum Reported</a>	Edit
<a href="#">Lump Sum Timely Reported</a>	Edit
<a href="#">Mandatory Requirement</a>	Edit
<a href="#">Non Compliance</a>	Edit
<a href="#">Non Compliance #2</a>	Edit
<a href="#">Non Cooperation with Medical Evaluation</a>	Edit
<a href="#">PAES ES Non Compliance</a>	Edit
<a href="#">PAES Fraud</a>	Edit
<a href="#">PAES Mandatory Requirement</a>	Edit
<a href="#">POI Code Excess Resource</a>	Edit
<a href="#">POI for Resource (Restricted account WD)</a>	Edit
<a href="#">Procedural Requirement</a>	Edit
<a href="#">QC</a>	Edit
<a href="#">Reapplied before waiting period</a>	Edit
<a href="#">SSI</a>	Edit
<a href="#">SSI Advance Non Cooperation</a>	Edit
<a href="#">SSIP Fraud</a>	Edit
<a href="#">Time Limited Assistance</a>	Edit
<a href="#">Voluntary Quit</a>	Edit

Figure 2.4.2.1 – Non-Compliance and Sanction Summary Page

### 2.5.3 Description of Changes

1. User can navigate to Non-Compliance And Sanction Summary Page by clicking on Non-Compliance/Sanction link from task navigation(Global navigation: Admin Tools, Local navigation: Admin,Task Navigation: GA/GR County Admin -> Non-Compliance/Sanction). The link will display if the user is having 'NonComplianceAndSanctionSummaryView'.
2. County – This field will display the county of the user.
3. Non-Compliance – This section will be an expandable section with the following Types listed beneath it. Functionalities will be defined in a future SCR.
4. Sanction – This section will be an expandable section with the Types listed beneath it. All the Types will be hyper link and on click of each type the user will navigate to Sanction Type Detail Page in view mode. The types will be hyper link only if user has 'NonComplianceAndSanctionDetailView' right. This section will be collapsed by default.
  - a. Age Exempt Fraud
  - b. Aid Received More Than Time Limit
  - c. Audit
  - d. CALM Fraud
  - e. Cessation of Expense
  - f. Date of Strike
  - g. Failed work project
  - h. Failure to complete Quarterly Reporting
  - i. Fleeing Felon/GA
  - j. GA Fraud
  - k. GAADS
  - l. Housing Expense
  - m. IPV
  - n. Job Refusal
  - o. Job Refusal - PAES
  - p. Job Search
  - q. Job Termination
  - r. Lump Sum POI
  - s. Lump Sum Reported
  - t. Lump Sum Timely Reported
  - u. Mandatory Requirement
  - v. Non Compliance
  - w. Non Compliance #2
  - x. Non Cooperation with Medical Evaluation
  - y. PAES ES Non Compliance
  - z. PAES Fraud
  - aa. PAES Mandatory Requirement
  - bb. POI Code Excess Resource

- cc. POI for Resource (Restricted account WD)
  - dd. Procedural Requirement
  - ee. QC
  - ff. Reapplied before waiting period
  - gg. SSI
  - hh. SSI Advance Non Cooperation
  - ii. SSIP Fraud
  - jj. Time Limited Assistance
  - kk. Voluntary Quit
5. Edit: On click of Edit button the user will navigate to Sanction Type Detail Page in Edit mode. The Button will only display if the user has 'NonComplianceAndSanctionDetailEdit' right.

#### 2.5.4 Page Location

- **Global: Admin Tools**
- **Local: Admin**
- **Task: GA/GR County Admin -> Non-Compliance/Sanction**

#### 2.5.5 Security Updates

Security Rights

Security Right	Right Description	Right to Group Mapping
NonComplianceAndSanctionSummaryView	Non-Compliance And Sanction Summary	Non-Compliance And Sanction Summary View
NonComplianceAndSanctionDetailView	Non-Compliance And Sanction Detail	Non-Compliance And Sanction Detail View, Non-Compliance And Sanction Detail Edit
NonComplianceAndSanctionDetailEdit	Non-Compliance And Sanction Detail	Non-Compliance And Sanction Detail Edit

## Security Groups

Security Group	Group Description	Group to Role Mapping
Non-Compliance And Sanction Summary View	This group has the capability to access the Non-Compliance And Sanction Summary page to view existing Types information.	See the Security Matrix for the group to role associations
Non-Compliance And Sanction Detail View	This group has the capability to access the Non-Compliance And Sanction Detail page to view existing Types information.	See the Security Matrix for the group to role associations
Non-Compliance And Sanction Detail Edit	This group has the capability to access the Non-Compliance And Sanction Detail page to view and edit existing Types information.	See the Security Matrix for the group to role associations

### 2.5.6 Page Mapping

Add page mapping for the new fields for this page.

### 2.5.7 Page Usage/Data Volume Impacts

This is a new page and will not be frequented often in a normal workflow.

## 2.6 Sanction Type Detail Page

### 2.6.1 Overview

The Sanction Type Detail page will provide the user a list of values associated to the selected type. The Values for the type can be changed for the given begin and end month.

## 2.6.2 Sanction Type Detail Mockup

### Sanction Type Detail

**SSI Advance Non Cooperation**

**County:** San Francisco      **View Month:** 12/2021

Item	Value
Activated	Yes ▾
Begin Month	<input type="text"/> <input type="button" value="⌄"/>
End Month	<input type="text"/> <input type="button" value="⌄"/>
Sanction Duration Units	Days ▾
Sanction Duration 1st Occurrence	<input type="text" value="30"/>
Sanction Duration 2nd Occurrence	<input type="text" value="60"/>
Sanction Duration 3rd Occurrence	<input type="text" value="90"/>
Sanction Duration 4th Occurrence	<input type="text" value="120"/>
Sanction Duration 5th Occurrence or more	<input type="text" value="150"/>
San Francisco Program	Personal Assisted Employment Services ▾

**Pending Updates**

Item	Value	Begin Month	End Month	Updated By
No Data Found.				

Figure 2.5.2.1 – Sanction Type Detail

## 2.6.3 Description of Changes

1. The section title will match the 'Type' selected to reach the detail page.
2. County – The County of the logged in user.
3. View Month – The date the user is viewing the associated type for. The calendar icon will allow the user to select the date. The date will display in MM/YYYY format. Standard Date validation for the date format will apply. The default date will be the current month.
4. View – This button will refresh the type values display information based on dates provided.
5. Item – The list of items associated to the selected type.
6. Value – The values of the items.
7. The following table below table contains the list of items and the value description for those items:

Items	Value and its Description
Activated	It's the dropdown field having the value Yes/No. This field will only be editable in Create and Edit mode.
Begin Month	The date the item start being active/inactive. This will be a date field in MM/YYYY format. This field will only be editable in Create and Edit mode.
End Month	The date the item stopped being active/inactive. This will be a date field in MM/YYYY format. This field will only be editable in Create and Edit mode. The validation message, "End Month cannot be prior to the Begin Month.", will display if the user attempts to Save with a month prior to the Begin Month.
Sanction Duration Units	The Dropdown containing the values Days, Month. This field will only be editable in Create and Edit mode.
Sanction Duration 1st Occurrence	The input field that accepts the numerical values. This field will only be editable in Create and Edit mode.
Sanction Duration 2nd Occurrence	The input field that accepts the numerical values. This field will only be editable in Create and Edit mode.
Sanction Duration 3rd Occurrence	The input field that accepts the numerical values. This field will only be editable in Create and Edit mode.
Sanction Duration 4th Occurrence	The input field that accepts the numerical values. This field will only be editable in Create and Edit mode.
Sanction Duration 5th Occurrence or more	The input field that accepts the numerical values. This field will only be editable in Create and Edit mode.
San Francisco Program	The dropdown field containing sub program for San Francisco. The Item will only appear when the county selected is San Francisco. This field will only be editable in Create and Edit mode. It contains below values: 1)Age Exempt 2)Cash Aid Link to Medical 3)General Assistance/General Relief 4)Personal Assisted Employment Services 5)SSI Pending

**Commented [PE4]:** Lien Comment:

For the Begin and End month, does the logic check if there is an end month with high date for the same sanction and/or overlapping?

**Commented [PE5]:** Lien Comment:

Is it for GA/GR Solution program?

8. Pending Updates – This section will display the list of changes made throughout the day that have yet to be applied by users. Changes made by a user will be pending until they are applied via an overnight batch job. The section will display the same information inserted as well as an updated by column. The updated by column will display a staff id as a link to the worker detail page of the user specified.
9. Save - This button will save update the information based on the user's input and return the user to the Non-Compliance And Sanction page. This button is only visible in Edit mode.
10. Cancel - This button will return the user to the Non-Compliance And Sanction page without applying any changes. This button is only visible in Edit mode.
11. Edit - This button will take the user to the Sanction Type Detail Page in Edit mode. This button is only visible in View mode.
12. Close - This button will return the user to the Non-Compliance And Sanction page. This button is only visible in View mode.
13. Records created will be effective dated so that there is always a high-dated determination for every rule.

#### 2.6.4 Page Location

- **Global: Admin Tools**
- **Local: Admin**
- **Task: GA/GR County Admin -> Non-Compliance/Sanction**

#### 2.6.5 Security Updates

Security Rights needs to be updated.

#### 2.6.6 Page Mapping

Add page mapping for the new fields for this page.

#### 2.6.7 Page Usage/Data Volume Impacts

This is a new page and will not be frequented often in a normal workflow.

## 2.7 Eligibility Employment Services Functionality

### 2.7.1 Eligibility Changes

#### 2.7.1.1 Overview

When the 'GA/GR Automated Solution' program is in pending status and doesn't have the corresponding 'GA/GR Employment Services' program in the same case then the following 'Automated Program Actions' section will be shown to create the 'GA/GR Employment Services' program.

#### 2.7.1.2 General Assistance/General Relief (GR) EDBC Summary' Section Mockup

Automated Program Actions				
Name	DOB	Program	Status	Status Reason
GR, Sample 23M	10/10/1998	GA/GR Employment Services	Pending	Mandatory

Apply Program Actions

#### 2.6.1.2.1 General Assistance/General Relief (GR) EDBC Summary – Automated Program Actions section with Apply Program Actions button.

Automated Program Actions				
Name	DOB	Program	Status	Status Reason
GR, First 26M	10/10/1995	GA/GR Employment Services	Pending	Mandatory
GR, Second 23F	10/10/1998	GA/GR Employment Services	Pending	Mandatory

Apply Program Actions

#### 2.6.1.2.2 General Assistance/General Relief (GR) EDBC Summary – Automated Program Actions section with Apply Program Actions button for more than one person.

- Activated GA/GR Employment Services program as indicated by the Automated Program Actions section.

#### 2.6.1.2.3 General Assistance/General Relief (GR) EDBC Summary – Validation Message.

- Warning: To activate the required GA/GR Employment Services program, press the "Apply Program Actions" button (or if you're sure you don't want to, press "Accept" again now).

#### 2.6.1.2.4 General Assistance/General Relief (GR) EDBC Summary – Validation Message.



Sanction Information				
Name	Type	Instance	Begin Date	End Date
GR, First 23F	Non Compliance	1	01/01/2022	01/30/2022

**2.6.1.2.5 General Assistance/General Relief (GR) EDBC Summary – Sanction Information Section.**

**2.7.1.3 Description of Changes**

1. The 'Automated Program Actions' section will be shown at the end of the 'General Assistance/General Relief (GR) EDBC Summary' page for BDA month when all the following conditions are met:
  - a. The General Assistance/General Relief (GR) BDA month is currently in the pending status.
  - b. There is no 'GA/GR Employment Services' program created for the program person(s) OR the status of the 'GA/GR Employment Services' is 'Deregistered' for the program person(s).
2. The 'Automated Program Actions' section will have a button 'Apply Program Actions'.
3. Clicking on 'Apply Program Actions' button, a pending 'GA/GR Employment Services' program will be created for each program person(s).
  - a. If the program does not exist or if the program exists for the program person(s) then the status of the program will be changed from 'Deregistered' to 'Pending'.
4. Clicking on 'Apply Program Actions' button in the 'Automated Program Actions' section to create 'GA/GR Employment Services' program is not mandatory for authorizing the General Assistance/General Relief (GR) EDBC.
5. When clicking on the 'Accept' button without clicking on 'Automated Program Actions' button then the following message will display on the 'General Assistance/General Relief (GR) EDBC Summary' page:
  - a. Warning: To activate the required GA/GR Employment Services program, press the "Apply Program Actions" button (or if you're sure you don't want to, press "Accept" again now).
6. When the 'Apply Program Actions' button on the 'Automated Program Actions' section is clicked the following message is displayed on the EDBC summary page:
  - a. "Activated GA/GR Employment Services program as indicated by the Automated Program Actions section."

7. After the button 'Apply Program Actions' is clicked and when the 'GA/GR Employment Services' program is created, or program status is changed then the 'Apply Program Actions' button will no longer be available in the 'Automated Program Actions' section.

Please Note:

- EDBC will consider only the sanction details created in the current county (current county is maintained in the backend and not shown in the online page). To consider the sanctions created for the GA/GR Automated Solution program persons, current case county and sanction created county should match along with the person id.
- A new 'Sanction Information' section (Figure 2.3.1.2.5) will be added to the General Assistance/General Relief (GR) EDBC Summary page with sanction details for each person created in the current EDBC run. This information will be saved in the EDBC staging table along with sanction created county information. Once the EDBC is authorized the information will be saved to the sanction table.
- When the sanction instance is greater than 5 then the sanction duration value is considered from the value that is defined for 'Sanction Duration 5<sup>th</sup> Occurrence or more' in 'Sanction Type Detail' page.

**Commented [PE6]:** Lien Comment:

Should it be GA/GR Automated Solution?

#### 2.7.1.4 Page Location

- **Global: Eligibility**
- **Local: Customer Information**
- **Task: EDBC Summary**

#### 2.7.1.5 Page Mapping

Add page mapping for the new fields for 'General Assistance/General Relief (GR) EDBC Summary' page.

### 2.7.2 Logic Overview - Auto creation of GA/GR Employment Services Program

#### 2.7.2.1 Overview

When the 'GA/GR Automated Solution' program is in pending status and case don't have the corresponding 'GA/GR Employment Services' program then the following two options will enable the worker to create the 'GA/GR Employment Services' program.

#### 2.7.2.2 Creating GA/GR Employment Services – Option 1

Create the 'GA/GR Employment Services' manually by adding the program from 'New Program' option.

### 2.7.2.2.1 Program Detail Page

Case Summary	Program Detail
Case Number: <input type="text"/> <input type="button" value="Go"/>	*- Indicates required fields <b>Select Program: *</b> GA/GR Employment Services <input type="button" value="Go"/>
Person Search	This Type_1 page took 0.22 seconds to load.
EBT Account Search	
Application Registration	
Case Summary	
Contact	
Authorized Representative	
Application Questions	
Negative Action	
<b>New Program</b>	
New Person	
Hide Person	
EBT Account List	

#### 2.6.2.2.1.1 – Choosing the Select Program: GA/GR Employment Services

### 2.7.2.3 Creating GA/GR Employment Services - Option 2

1. Run EDBC for 'GA/GR Automated Solution' for BDA month which is currently in the pending status.
2. Open 'General Assistance/General Relief (GR) EDBC Summary' page for BDA month and the following 'Automated Program Actions' section will be shown at the end of the page. This section will have a button 'Apply Program Actions' and when worker clicks on the button a 'GA/GR Employment Services' program with 'Pending' status will be created if it does not exist or if 'GA/GR Employment Services' program exists and the status is 'Deregistered' then GA/GR Employment Service program block will be reactivated by end dating the 'Deregistered' status and adding a Pending status.

**Commented [PE7]:** Lien Comment:

Please note that the GA/GR ES program block will be reactivated. The GA/GR ES program deregistered will be end dated and GA/GR ES program will be added

#### General Assistance/General Relief (GR) EDBC Summary - Automated Program Actions

Automated Program Actions				
Name	DOB	Program	Status	Status Reason
GR, Sample 23M	10/10/1998	GA/GR Employment Services	Pending	Mandatory

#### 2.6.2.3.1 – The Automated Program Actions section for one person in the program.

Automated Program Actions				
Name	DOB	Program	Status	Status Reason
GR, First 26M	10/10/1995	GA/GR Employment Services	Pending	Mandatory
GR, Second 23F	10/10/1998	GA/GR Employment Services	Pending	Mandatory

Apply Program Actions

**2.6.2.3.2 – The Automated Program Actions section for more than one person in program.**

3. Clicking this button and creation of 'GA/GR Employment Services' program is not **mandatory** from this page but is preferable. However, this will not prevent the worker from authorizing the EDBC without creating the 'GA/GR Employment Services' program for BDA month. Also, EDBC 'Type' will be 'Regular' (not 'Read Only') and no 'Type Reason' will be populated.

EDBC Information	
Quarterly Reporting Period Begin Month:	12/2021
Reporting Type Reason:	
Type:	Regular
Recalculation:	No

**2.6.2.3.3 – The General Assistance/General Relief (GR) EDBC Summary - EDBC Information Section**

4. The following message will be displayed in the EDBC summary page when clicking the 'Accept' button without clicking 'Apply Program Actions' button:  
Warning: To activate the required GA/GR Employment Services program, press the "Apply Program Actions" button (or if you're sure you don't want to, press "Accept" again now).
5. Clicking 'Apply Program Actions' in 'Automated Program Actions' section then
  - i. The following message will be displayed in the EDBC summary page: "Activated GA/GR Employment Services program as indicated by the Automated Program Actions sections."
  - ii. The button 'Apply Program Actions' will no longer be available in 'Automated Program Actions' section.
6. A new 'GA/GR Employment Services' program block will be created if not exists or status of the program will be changed from 'Deregistered' to 'Pending' with the begin date as the EDBC run date.

### 2.7.3 Sanction Functionality

#### Leverage Rule

Below is the corresponding leveraged CalWIN rule County Admin Matrix and the CalWIN number mapped to CalSAWS rules

Rule Description	Alameda	Contra Costa	Fresno	Orange	Placer	Sacramento	San Diego	San Francisco	San Luis Obispo	San Mateo	Santa Barbara	Santa Clara	Santa Cruz	Solano	Sonoma	Tulare	Ventura	Yolo
Non-Compliance - Sacramento.	N	N	N	N	N	Y	N	N	N	N	N	N	N	N	N	N	N	N
Non-Compliance - San Francisco.	N	N	N	N	N	N	N	Y	N	N	N	N	N	N	N	N	N	N
Employable Status-Alameda.	Y	N	N	N	N	N	N	N	N	N	N	N	N	N	N	N	N	N
Fail applicant if employable/conditionally employable, not cooperating with ES without good cause.	N	Y	N	N	N	N	N	N	N	Y	N	N	N	N	Y	Y	N	N
Fail Employable Spouse of Indiv that has emp services non-coop sanction and send MAPC to Sanction Indv if Sanction >= 3months during and 1st 3 months sanction in 6 months.	N	N	N	N	N	N	Y	N	N	N	N	N	N	N	N	N	N	N
Earned income – San Francisco Only.	N	N	N	N	N	N	N	Y	N	N	N	N	N	N	N	N	N	N

CalWIN Number	CalWIN Rule	CalSAWS Rule
EDX111C005	MPR-Sacramento	Non-Compliance - Sacramento.
EDX111C014	MPR-SanFrancisco	Non-Compliance - San Francisco.
EDX119C004	Employable Status-Alameda	Employable Status-Alameda.

EDX119C005	Fail applicant if employable/conditionally employable, not cooperating with ES without good cause	Fail applicant if employable/conditionally employable, not cooperating with ES without good cause.
EDX119C022	Fail Employable Spouse of Indiv that has Emp Svcs Non Coop Sanction and send MAPC to Sctd indiv if Snt >= 3 mnths dur and 1st 3 mnths snt in 6 mnths	Fail Employable Spouse of Indiv that has emp services non-coop sanction and send MAPC to Sanction Indv if Sanction >= 3months during and 1st 3 months sanction in 6 months.
EDX309C008	Earned income method 8 - San Francisco Only	Earned income – San Francisco Only.

### 2.7.3.1 EDBC Changes

#### 2.7.3.1.1 Overview

This section will provide the Eligibility Rules flow for Sanction that can be filtered for each CalWIN County.

#### 2.7.3.1.2 Description of Change

##### Sanction Rules Flow Diagram:

A Consolidated Rules Flow Visio document will be provided as a separate Attachment in addition to this design Document that will depict the rules for a selected County.

Please refer the [Rules Flow Diagram](#) in the Appendix section on how to open and navigate the Visio diagram.

##### New Program/Person Status:

New Program/Person Status Reasons will be added to be used by this Rule Flow. The following reasons will set to the program/person level when the following conditions are met:

1. The new status reason CT73 'Indv is Prev Sanctioned and Still Not Complying' will be set as a person failure reason when all the following conditions are met:
  - a. The individual already has a sanction applicable for the benefit month.
  - b. The program mode is intake.

Category	Short Description
73	Indv is Prev Sanctioned and Still Not Complying

2. The new status reason CT73 'Indv is Within the Sanction Period' will be set as a person failure reason when all the following conditions are met:
- a. The individual has a sanction applicable for the benefit month
  - b. Either I or II are true:
    - I. The following:
      - i. The GAGR Automated program BDA month is not the same as the benefit month.
      - ii. Any of the following:
        - a. The 'SFO PAES Sanction Exists' is True. (This is determined in the common routine sanction Visio flow)
        - b. The rule 'Non-Compliance - San Francisco.' is not active.
        - c. The rule 'Earned income – San Francisco Only.' is active.
    - II. All the following
      - i. The GAGR program BDA month is the same as the benefit month.
      - ii. The rule 'Earned income – San Francisco Only.' is active.
  - c. The individual has a sanction applicable for the benefit month.
  - d. The County (County from GA/GR Sanction Detail page) is the current case county.

**Commented [PE8]:** Lien Comment:  
Should it be GA/GR Automated program?

**Commented [PE9]:** Lien Comment:  
Should it be GA/GR automated program?

Category	Short Description
73	Indv is Within the Sanction Period

3. The new status reason CT73 'Another Counties Sanction Entered by the Worker' will be set as a program/person failure reason when all the following conditions are met:
- a. The individual has a sanction applicable for the benefit month
  - b. Either I or II are true:
    - I. The following:

- i. The GAGR program BDA month is not the same as the benefit month.
- ii. Any of the following:
  - a. The 'SFO PAES Sanction Exists' is True. (This is determined in the common routine sanction Visio flow)
  - b. The rule 'Non-Compliance - San Francisco.' is not active.
  - c. The rule 'Earned income – San Francisco Only.' is active.
- ii. All the following
  - i. The GAGR program BDA month is the same as the benefit month.
  - ii. The rule 'Earned income – San Francisco Only.' is active.
- c. The individual has a sanction applicable for the benefit month.
- d. The County (County from GA/GR Sanction Detail page) is NOT the current case county.

**Commented [PE10]:** Lien Comment:  
Should it be GA/GR automated program

**Commented [PE11]:** Lien Comment:  
Should it be GA/GR automated program

Category	Short Description
73	Another Countyies Sanction Entered by the Worker

- 4. The new status reason CT73 'CalWORKs Sanction is Applied - Fail Case/Indv' will be set as a person failure reason when all the following conditions are met:
  - a. The individual has a non-compliance applicable for the benefit month.
  - b. The non-compliance program type is 'Cash'.
  - c. The non-compliance type is not 'Drug/Fleeing Felon'.

Category	Short Description
73	CalWORKs Sanction is Applied - Fail Case/Indv

- 5. The new status reason CT73 'Indv Received 3 Months of Time-Limited GA Within the Last 12 Months' will be set as a display reason when all the following conditions are met:
  - a. The rule 'Employable Status-Alameda.' is active.



- b. The individual has a sanction applicable for the benefit month.
- c. The sanction type is 'Non-compliance'.

Category	Short Description
73	Indv Received 3 Months of Time-Limited GA Within the Last 12 Months

- 6. The new status reason CT73 'Individual is Under CalWORKs Drug Felony Sanction' will be set as a person failure reason when all the following conditions are met:
  - a. The individual has a non-compliance applicable for the benefit month.
  - b. The Non-compliance program type is 'Cash'.
  - c. The Non-compliance type is 'Drug/Fleeing Felon'.

Category	Short Description
73	Individual is Under CalWORKs Drug Felony Sanction

- 7. The new status reason CT73 'In POI for CalWORKs or RCA' will be set as a person failure reason when all the following conditions are met:
  - a. The individual has a non-compliance applicable for the benefit month.
  - b. The non-compliance program type is 'Cash'.
  - c. The non-compliance Type is 'Transferred Property/Income'.

Category	Short Description
73	In POI for CalWORKs or RCA

- 8. The new status reason CT73 'Serving a Previous Sanction' will be set as a person failure reason when all the following conditions are met:
  - a. The individual has a sanction applicable for the benefit month.
  - b. The sanction type is 'IPV'
  - c. The rule 'Non-Compliance - Sacramento.' is active.
  - d. The program is intake.

Category	Short Description
73	Serving a Previous Sanction

9. The new status reason CT73 'Previously Committed Fraud' will be set as a person failure reason when all the following conditions are met:
- The individual has a sanction applicable for the benefit month.
  - The sanction type is 'GA Fraud'
  - The program mode is intake.

Category	Short Description
73	Previously Committed Fraud

10. The new status reason CT73 'Committed an Act of Violence /Vandalism' will be set as a display reason when all the following conditions are met:
- There is an existing individual sanction applicable for the benefit month.
  - The sanction reason 'Committed an act of violence or vandalism in a social services office or related location' was selected and the reason is applicable for the county.

Category	Short Description
73	Committed an Act of Violence/Vandalism

11. The new status reason CT73 'Applicant is Serving a 90-Day Disqualification Period' will be set as a display reason when all the following conditions are met:
- The rule 'Fail applicant if employable/conditionally employable, not cooperating with ES without good cause.' is active.
  - The individual has a sanction applicable for the benefit month and the sanction type is one of the following:
    - Voluntary Quit
    - Job Refusal
    - Job Termination

- b. There is a sanction reason selected but there is no status reason for that sanction reason. (Determined by Reference Table)

Category	Short Description
73	Applicant is Serving a 90-Day Disqualification Period

12. The new status reason CT73 'Existing Sanc. for Failure to Comply with Work Project and/or Emp Req' will be set as a display reason when all the following conditions are met:

- a. The individual has a sanction applicable for the benefit month
- b. Either I or II are true:
  - i. The following:
    - a. The GAGR program BDA month is not the same as the benefit month.
    - ii. Any of the following:
      - a. The 'SFO PAES Sanction Exists' is True. (This is determined in the common routine sanction Visio flow)
      - b. The rule 'Non-Compliance - San Francisco.' is not active.
      - c. The rule 'Earned income – San Francisco Only.' is active.
  - ii. All the following
    - i. The GAGR program BDA month is the same as the benefit month.
    - ii. The rule 'Earned income – San Francisco Only.' is active.
- c. The rule 'Fail applicant if employable/conditionally employable, not cooperating with ES without good cause.' is active.
- d. The individual has a Sanction applicable for the benefit month.
- e. The sanction type is non-compliance.
- f. There is a sanction reason selected and the sanction reason does not have a status reason (Determined by RT Table)

**Commented [PE12]:** Lien Comment:  
Should it be GA/GR automated program

**Commented [PE13]:** Lien Comment:  
Should it be GA/GR automated program

Category	Short Description
73	Existing Sanc. for Failure to Comply with Work Project and/or Emp Req

13. The following status reasons will be set based on the sanction status reason (Reason from GA/GR Sanction Detail page). Below table shows Sanction status reason and the corresponding status reason.

GA/GR Sanction Detail Reason	CalSAWS Status Reason
Simultaneously applied for and/or received GR in two or more jurisdictions	Applied for and/or Received GR in Two or More Jurisdictions
Applied for and/or received GR using a false identity and/or SSN.	Applied for and/or Received GR Using a False Identity and/or SSN
Knowingly accepted or negotiated GR benefits to which the GR AU is not entitled	Knowingly Accepted or Negotiated GR Benefits
Failed to report application for or receipt of income.	Failed to Report Application For or Receipt of Income
Failed to report anticipated income.	Failed to Report Anticipated Income
Failed to report ownership of property.	Failed to Report Ownership of Property
Falsified incapacity documentation.	Falsified Incapacity Documentation
Failed to report and/or apply for all persons in the GR AU.	Failed to Report and/or Apply for All Persons in GR Economic Unit
Falsified evidence or info- resp relative/Non-citizen sponsor's inc, prop, willingness to provide support	False Info Abt Rel/Non-citiz. Sponsor's Inc or Prop or Supp.
Falsified evidence or information about the residence of the GR AU	False Evidence or Info Abt Res of the GR Economic Unit
Failed to coop with an SIU investigation, incl failure to keep appointment(s) with an investigator	Failed to Cooperate with Appt and Investigation
Misrepresented info provided on the GR application and/or Statement of Facts	False Info Provided On GR App and/or Statement of Facts
Committed an act of violence or vandalism in a Social Services office or related location	Committed an Act of Violence or Vandalism
Gives the county fraudulent documents or did not give the county complete information	Provided County Fraudulent Docs or Not Provided Comp Info

Convicted of welfare fraud	Convicted of Welfare Fraud
Fails to report all facts.	Fails to Report all Facts
Cashing duplicate warrant.	Cashing Duplicate Warrant
Receiving a lump sum.	Receiving a Lump Sum
Serving a fraud sanction	Serving a Fraud Sanction
Serving a previous sanction.	Serving a Previous Sanction
Did not provide proof of current status of SSI/SSP application.	Did not Provide Proof of Current Status of SSI/SSP App
Previously committed fraud.	Previously Committed Fraud
Member of the Economic Unit falsified evidence about the responsible relative/ Non-citizen sponsor's income	False Evidence about Resp Relative/ Non-citizen Sponsor's Income
Member of Economic Unit falsified evidence about the responsible relative/ Non-citizen sponsor's property.	False Evidence about Resp Relative/ Non-citizen Sponsor's Property
Member of Economic Unit falsified evidence about respons. Relative/ sponsor's willingness to support	False Info about Resp Rel/Non-citizen. Sponsor's Willingness to Supp.
Member of the Economic Unit falsified info about the responsible relative/ Non-citizen sponsor's income.	False Information about Resp Relative/ Non-citizen Sponsor's Income
Member of Economic Unit falsified info about the responsible relative/ Non-citizen sponsor's property.	False Information about Resp Relative/ Non-citizen Sponsor's Property
Member of Economic Unit falsified info about the respons relative sponsor's willingness to support	False Info about Resp Rel/Non-citizen. Sponsor's Willingness to Supp.
Currently under a fraud sanction from receiving GA	Under a Fraud Sanction from Receiving GA
Provided apparent fraudulent documents.	Provided Apparent Fraudulent Documents
Reports a false place of residence.	Reports a False Place of Residence
Application is denied because client provided fraudulent information	Client provided fraudulent information

## 2.7.3.2 Correspondence

### 2.7.3.2.1 Overview

This section describes the Notice of Action (NOA) triggers that will be created depending on the resulting EDBC reason code in the previous sections. Notices only trigger from certain reason codes listed in this section.

The reason codes listed in the rule recommendations are formatted as <CalWIN Reason Code> - <CalSAWS EDBC Display Reason>. The trigger condition describes the statuses and reasons in which the notice will trigger for. The county-specific information describes which counties and actions the notices will generate for, as well as the document name and number that will be displayed on the distributed documents page. The template column determines how notices are grouped when generated.

### 2.7.3.2.2 Description of Change

#### 1. Reason Code: XAN078 - Indv is Within the Sanction Period

##### a. Trigger Condition

- i. This notice generates for the applicable counties when the person was 'Pending' and is now 'Denied' on the current EDBC with the reason 'Indv is Within the Sanction Period'.

##### b. Person Level Reason

##### c. County-specific information:

County	Action	Document Description	Number	Template
Alameda	Denial	GA Denial - Sanction Period Still In Effect	132 3 (10/10)	11462
Orange	Denial	GR Denial - Under Sanction	143 B	11608
Sacramento	Denial	DENIAL/FAILURE TO COMPLY WITH SANCTION RESTORATION REQM	CDS 190-0 (12/95)	11746
Santa Barbara	Denial	GR - Deny - Still Serving Sanction/POI	159-0	12332
Santa Clara	Denial	GA Denial - Client Serving Sanction	GA 229	12042
San Mateo	Denial	GA Denial - Penalty Period Not Expired	127 0	607394
Yolo	Denial	General Assistance - sanction period	136-3	611376

#### 2. Reason Code: XAN178 - Another Counties Sanction Entered by the Worker

##### a. Trigger Condition

- i. This notice generates for the applicable counties when the program was 'Active' in the previous saved EDBC and is now 'Discontinued' on the current EDBC with the reason 'Another Counties Sanction Entered by the Worker'.
  - or
  - ii. This notice generates for the applicable counties when the program was 'Pending' and is now 'Denied' on the current EDBC with the reason 'Another Counties Sanction Entered by the Worker'.
- b. Program Level Reason
- c. County-specific information:

County	Action	Document Description	Number	Template
Alameda	Discontinuance	GA Disc - Other County/Other State Sanction	009 3 (10/10)	12652
Alameda	Denial	GA Denial - Other County/Other State Sanction	123 1 (10/10)	11462
Orange	Denial	GR Denial: Sanctioned in Another County/Jurisdiction.	147 A	11608
Santa Barbara	Denial	GR - Deny - Still Serving Sanction/POI	159-0	12332
Yolo	Discontinuance	General Assistance Discontinuance - CalWORKs Exclusions	010-3	107879
Yolo	Denial	General Assistance Denial - Sanctioned by other County	119-3	611375
Yolo	Denial	GA Denial - Denial Other County Sanction	123-3	12242
Yolo	Denial	General Assistance Denial - CalWORKs Exclusions	125-3	611466

**3. Reason Code: XAN180 - CalWORKs Sanction is Applied - Fail Case/Indv**

- a. Trigger Condition
- i. This notice generates for the applicable counties when the person was 'Active' in the previous saved EDBC and is now 'Discontinued' on the current EDBC with the reason 'CalWORKs Sanction is Applied - Fail Case/Indv'.
  - or
  - ii. This notice generates for the applicable counties when the person was 'Pending' and is now 'Denied' on the current EDBC with the reason 'CalWORKs Sanction is Applied - Fail Case/Indv'.
- b. Person Level Reason
- c. County-specific information:

County	Action	Document Description	Number	Template
--------	--------	----------------------	--------	----------

Alameda	Denial	GA Denial - Ineligible Due to CalWORKs Penalty or Sanction	116 3 (10/10)	11462
Santa Barbara	Discontinuance	GR - Disc - Other Cash Program	053-1	12334
Santa Barbara	Denial	GR - Deny - Eligible to CalWORKs/Honor CalWORKs POI/Sanction	153-0	12332
San Diego	Denial	GR Person/Case Denied Due to CalWORKs Ineligibility	143-2	12733
Yolo	Discontinuance	General Assistance Discontinuance - CalWORKs Exclusions	010-3	107879

**4. Reason Code: XAN506 - Indv Received 3 Months of Time-Limited GA Within the Last 12 Months**

a. Trigger Condition

- i. This notice generates for the applicable counties when the program was 'Pending' and is now 'Denied' on the current EDBC with the reason 'Indv Received 3 Months of Time-Limited GA Within the Last 12 Months'.
- ii. This notice generates for the applicable counties when the program was 'Active' in the previous saved EDBC and is still 'Active' on the current EDBC with a change in benefits and has the reason 'Indv Received 3 Months of Time-Limited GA Within the Last 12 Months'.

b. Person Level Reason

c. County-specific information:

County	Action	Document Description	Number	Template
Alameda	Denial	GA Denial - Time Limit	241 1 (10/10)	12645
Orange	Change	GR Status Change NOA - Incap to Employable	262 C	609322

**5. Reason Code: XAN809 - In POI for CalWORKs or RCA**

a. Trigger Condition

- i. This notice generates for the applicable counties when the person was 'Pending' and is now 'Denied' on the current EDBC with the reason 'In POI for CalWORKs or RCA'.

b. Person Level Reason

c. County-specific information:

County	Action	Document Description	Number	Template
Orange	Denial	GR Denial - Cash Ineligibility due to Lump Sum Payment in CalWORKs/RCA	234 A	11608



San Diego	Denial	GR Person/Case Denied Due to CalWORKs Ineligibility	143-2	12733
-----------	--------	---	-------	-------

**6. Reason Code: XAN889 - Serving a Previous Sanction**

a. Trigger Condition

- i. This notice generates for the applicable counties when the person was 'Pending' and is now 'Denied' on the current EDBC with the reason 'Serving a Previous Sanction'.

b. Person Level Reason

c. County-specific information:

County	Action	Document Description	Number	Template
Sacramento	Denial	GA Denial/imposing fraud sanction: investigations/court order	CDS 191-0 (01/96)	11748

**7. Reason Code: XAN896 - Previously Committed Fraud**

a. Trigger Condition

- i. This notice generates for the applicable counties when the person was 'Pending' and is now 'Denied' on the current EDBC with the reason 'Previously Committed Fraud'.

b. Person Level Reason

c. County-specific information:

County	Action	Document Description	Number	Template
Sacramento	Denial	DENIAL/PERMANENT FRAUD DISQUALIFICATION	CDS 186-0 (1/96)	11746
Sacramento	Denial	GA Denial/imposing fraud sanction: investigations/court order	CDS 191-0 (01/96)	11748

**8. Reason Code: XAN919 - Committed an Act of Violence/Vandalism**

a. Trigger Condition

- i. This notice generates for the applicable counties when the person was 'Active' in the previous saved EDBC and is now 'Discontinued' on the current EDBC with the reason 'Committed an Act of Violence/Vandalism'.

b. Person Level Reason

c. County-specific information:

County	Action	Document Description	Number	Template
San Diego	Discontinuance	GR Discontinuance - Acts of Violence	003.2	12726

**9. Reason Code: XAN986 - Applicant is Serving a 90-Day Disqualification Period**

a. Trigger Condition

- i. This notice generates for the applicable counties when the person was 'Pending' and is now 'Denied' on the current EDBC with the reason 'Applicant is Serving a 90-Day Disqualification Period'.

b. Person Level Reason

c. County-specific information:

County	Action	Document Description	Number	Template
Sonoma	Denial	GA Denial - Disqualification Period for Job Quit Not Met	125-0 (01/98)	12539

**10. Reason Code: XAN994 - Existing Sanc. for Failure to Comply with Work Project and/or Emp Req**

a. Trigger Condition

- i. This notice generates for the applicable counties when the person was 'Pending' and is now 'Denied' on the current EDBC with the reason 'Existing Sanc. for Failure to Comply with Work Project and/or Emp Req'.

b. Person Level Reason

c. County-specific information:

County	Action	Document Description	Number	Template
Sonoma	Denial	GA Denial - Failure to Comply with Work Project/Emp & Trng Requirements	112-2 (08/98)	12539

**11. Reason Code: XAN870 - Applied for and/or Received GR in Two or More Jurisdictions**

a. Trigger Condition

- i. This notice generates for the applicable counties when the person was 'Active' in the previous saved EDBC and is now 'Discontinued' on the current EDBC with the reason 'Applied for and/or Received GR in Two or More Jurisdictions'.
- or
- ii. This notice generates for the applicable counties when the person was 'Pending' and is now 'Denied' on the current EDBC with the reason 'Applied for and/or Received GR in Two or More Jurisdictions'.

b. Person Level Reason

c. County-specific information:

County	Action	Document Description	Number	Template
--------	--------	----------------------	--------	----------

Orange	Discontinuance	GR Discontinuance - (90/180 Day Sanction)	083/084 B	609248
Orange	Denial	GR Denial - (90/180 Day Sanction)	115/116 B	609249

**12. Reason Code: XAN871 - Applied for and/or Received GR Using a False Identity and/or SSN**

a. Trigger Condition

- i. This notice generates for the applicable counties when the person was 'Active' in the previous saved EDBC and is now 'Discontinued' on the current EDBC with the reason 'Applied for and/or Received GR Using a False Identity and/or SSN'.
- or
- ii. This notice generates for the applicable counties when the person was 'Pending' and is now 'Denied' on the current EDBC with the reason 'Applied for and/or Received GR Using a False Identity and/or SSN'.

b. Person Level Reason

c. County-specific information:

County	Action	Document Description	Number	Template
Orange	Discontinuance	GR Discontinuance - (90/180 Day Sanction)	083/084 B	609248
Orange	Denial	GR Denial - (90/180 Day Sanction)	115/116 B	609249

**13. Reason Code: XAN872 - Knowingly Accepted or Negotiated GR Benefits**

a. Trigger Condition

- i. This notice generates for the applicable counties when the person was 'Active' in the previous saved EDBC and is now 'Discontinued' on the current EDBC with the reason 'Knowingly Accepted or Negotiated GR Benefits'.
- or
- ii. This notice generates for the applicable counties when the person was 'Pending' and is now 'Denied' on the current EDBC with the reason 'Knowingly Accepted or Negotiated GR Benefits'.

b. Person Level Reason

c. County-specific information:

County	Action	Document Description	Number	Template
Orange	Discontinuance	GR Discontinuance - (90/180 Day Sanction)	083/084 B	609248

Orange	Denial	GR Denial - (90/180 Day Sanction)	115/116 B	609249
--------	--------	-----------------------------------	-----------	--------

**14. Reason Code: XAN873 - Failed to Report Application For or Receipt of Income**

a. Trigger Condition

- i. This notice generates for the applicable counties when the person was 'Active' in the previous saved EDBC and is now 'Discontinued' on the current EDBC with the reason 'Failed to Report Application For or Receipt of Income'.
- or
- ii. This notice generates for the applicable counties when the person was 'Pending' and is now 'Denied' on the current EDBC with the reason 'Failed to Report Application For or Receipt of Income'.

b. Person Level Reason

c. County-specific information:

County	Action	Document Description	Number	Template
Orange	Discontinuance	GR Discontinuance - (90/180 Day Sanction)	083/084 B	609248
Orange	Denial	GR Denial - (90/180 Day Sanction)	115/116 B	609249

**15. Reason Code: XAN874 - Failed to Report Anticipated Income**

a. Trigger Condition

- i. This notice generates for the applicable counties when the person was 'Active' in the previous saved EDBC and is now 'Discontinued' on the current EDBC with the reason 'Failed to Report Anticipated Income'.
- or
- ii. This notice generates for the applicable counties when the person was 'Pending' and is now 'Denied' on the current EDBC with the reason 'Failed to Report Anticipated Income'.

b. Person Level Reason

c. County-specific information:

County	Action	Document Description	Number	Template
Orange	Discontinuance	GR Discontinuance - (90/180 Day Sanction)	083/084 B	609248
Orange	Denial	GR Denial - (90/180 Day Sanction)	115/116 B	609249

**16. Reason Code: XAN875 - Failed to Report Ownership of Property**

a. Trigger Condition

- i. This notice generates for the applicable counties when the person was 'Active' in the previous saved EDBC and is now 'Discontinued' on the current EDBC with the reason 'Failed to Report Ownership of Property'.
  - or
  - ii. This notice generates for the applicable counties when the person was 'Pending' and is now 'Denied' on the current EDBC with the reason 'Failed to Report Ownership of Property'.
- b. Person Level Reason
- c. County-specific information:

County	Action	Document Description	Number	Template
Orange	Discontinuance	GR Discontinuance - (90/180 Day Sanction)	083/084 B	609248
Orange	Denial	GR Denial - (90/180 Day Sanction)	115/116 B	609249

**17. Reason Code: XAN876 - Falsified Incapacity Documentation**

- a. Trigger Condition
- i. This notice generates for the applicable counties when the person was 'Active' in the previous saved EDBC and is now 'Discontinued' on the current EDBC with the reason 'Falsified Incapacity Documentation'.
  - or
  - ii. This notice generates for the applicable counties when the person was 'Pending' and is now 'Denied' on the current EDBC with the reason 'Falsified Incapacity Documentation'.
- b. Person Level Reason
- c. County-specific information:

County	Action	Document Description	Number	Template
Orange	Discontinuance	GR Discontinuance - (90/180 Day Sanction)	083/084 B	609248
Orange	Denial	GR Denial - (90/180 Day Sanction)	115/116 B	609249

**18. Reason Code: XAN877 - Failed to Report and/or Apply for All Persons in GR Economic Unit**

- a. Trigger Condition
- i. This notice generates for the applicable counties when the person was 'Active' in the previous saved EDBC and is now 'Discontinued' on the current EDBC with the reason 'Failed to Report and/or Apply for All Persons in GR Economic Unit'.

or

- ii. This notice generates for the applicable counties when the person was 'Pending' and is now 'Denied' on the current EDBC with the reason 'Failed to Report and/or Apply for All Persons in GR Economic Unit'.

b. Person Level Reason

c. County-specific information:

County	Action	Document Description	Number	Template
Orange	Discontinuance	GR Discontinuance - (90/180 Day Sanction)	083/084 B	609248
Orange	Denial	GR Denial - (90/180 Day Sanction)	115/116 B	609249

**19. Reason Code: XAN878 - False Info Abt Rel/Non-citiz. Sponsors Inc or Prop or Supp.**

a. Trigger Condition

- i. This notice generates for the applicable counties when the person was 'Active' in the previous saved EDBC and is now 'Discontinued' on the current EDBC with the reason 'False Info Abt Rel/Non-citiz. Sponsors Inc or Prop or Supp.'

b. Person Level Reason

c. County-specific information:

County	Action	Document Description	Number	Template
Orange	Discontinuance	GR Discontinuance - (90/180 Day Sanction)	083/084 B	609248

**20. Reason Code: XAN879 - False Evidence or Info Abt Res of the GR Economic Unit**

a. Trigger Condition

- i. This notice generates for the applicable counties when the person was 'Active' in the previous saved EDBC and is now 'Discontinued' on the current EDBC with the reason 'False Evidence or Info Abt Res of the GR Economic Unit'.

or

- ii. This notice generates for the applicable counties when the person was 'Pending' and is now 'Denied' on the current EDBC with the reason 'False Evidence or Info Abt Res of the GR Economic Unit'.

b. Person Level Reason

c. County-specific information:

County	Action	Document Description	Number	Template
--------	--------	----------------------	--------	----------

Orange	Discontinuance	GR Discontinuance - (90/180 Day Sanction)	083/084 B	609248
Orange	Denial	GR Denial - (90/180 Day Sanction)	115/116 B	609249

**21. Reason Code: XAN880 - Failed to Cooperate with Appt and Investigation**

a. Trigger Condition

i. This notice generates for the applicable counties when the person was 'Active' in the previous saved EDBC and is now 'Discontinued' on the current EDBC with the reason 'Failed to Cooperate with Appt and Investigation'.

or

ii. This notice generates for the applicable counties when the person was 'Pending' and is now 'Denied' on the current EDBC with the reason 'Failed to Cooperate with Appt and Investigation'.

b. Person Level Reason

c. County-specific information:

County	Action	Document Description	Number	Template
Orange	Discontinuance	GR Discontinuance - (90/180 Day Sanction)	083/084 B	609248
Orange	Denial	GR Denial - (90/180 Day Sanction)	115/116 B	609249

**22. Reason Code: XAN881 - False Info Provided On GR App and/or Statement of Facts**

a. Trigger Condition

i. This notice generates for the applicable counties when the person was 'Active' in the previous saved EDBC and is now 'Discontinued' on the current EDBC with the reason 'False Info Provided On GR App and/or Statement of Facts'.

or

ii. This notice generates for the applicable counties when the person was 'Pending' and is now 'Denied' on the current EDBC with the reason 'False Info Provided On GR App and/or Statement of Facts'.

b. Person Level Reason

c. County-specific information:

County	Action	Document Description	Number	Template
Orange	Discontinuance	GR Discontinuance - (90/180 Day Sanction)	083/084 B	609248
Orange	Denial	GR Denial - (90/180 Day Sanction)	115/116 B	609249

**23. Reason Code: XAN882 - Committed an Act of Violence or Vandalism**

a. Trigger Condition

i. This notice generates for the applicable counties when the person was 'Active' in the previous saved EDBC and is now 'Discontinued' on the current EDBC with the reason 'Committed an Act of Violence or Vandalism'.

or

ii. This notice generates for the applicable counties when the person was 'Pending' and is now 'Denied' on the current EDBC with the reason 'Committed an Act of Violence or Vandalism'.

b. Person Level Reason

c. County-specific information:

County	Action	Document Description	Number	Template
Orange	Discontinuance	GR Discontinuance - (90/180 Day Sanction)	083/084 B	609248
Orange	Denial	GR Denial - (90/180 Day Sanction)	115/116 B	609249
San Diego	Discontinuance	GR Discontinuance - Acts of Violence	003.2	12726

**24. Reason Code: XAN883 - Provided County Fraudulent Docs or Not Provided**

**Comp Info**

a. Trigger Condition

i. This notice generates for the applicable counties when the person was 'Active' in the previous saved EDBC and is now 'Discontinued' on the current EDBC with the reason 'Provided County Fraudulent Docs or Not Provided Comp Info'.

b. Person Level Reason

c. County-specific information:

County	Action	Document Description	Number	Template
San Diego	Discontinuance	GR Disc - Fraud - 30 Day Sanction	051-2	12726

**25. Reason Code: XAN890 - Did not Provide Proof of Current Status of SSI/SSP App**

a. Trigger Condition

i. This notice generates for the applicable counties when the person was 'Active' in the previous saved EDBC and is now 'Discontinued' on the current EDBC with the reason 'Did not Provide Proof of Current Status of SSI/SSP App'.

b. Person Level Reason



c. County-specific information:

County	Action	Document Description	Number	Template
Sacramento	Discontinuance	GA-Cash: Disc and 1 month sanction for various failures to cooperate	CDS 213-0 (04-97)	11806

**26. Reason Code: XAN931 - False Evidence about Resp Relative/Non-citizen Sponsors Income**

a. Trigger Condition

- i. This notice generates for the applicable counties when the person was 'Active' in the previous saved EDBC and is now 'Discontinued' on the current EDBC with the reason 'False Evidence about Resp Relative/Non-citizen Sponsors Income'.

b. Person Level Reason

c. County-specific information:

County	Action	Document Description	Number	Template
Orange	Discontinuance	GR Discontinuance - (90/180 Day Sanction)	083/084 B	609248

**27. Reason Code: XAN932 - False Evidence about Resp Relative/ Non-citizen Sponsors Property**

a. Trigger Condition

- i. This notice generates for the applicable counties when the person was 'Active' in the previous saved EDBC and is now 'Discontinued' on the current EDBC with the reason 'False Evidence about Resp Relative/ Non-citizen Sponsors Property'.

b. Person Level Reason

c. County-specific information:

County	Action	Document Description	Number	Template
Orange	Discontinuance	GR Discontinuance - (90/180 Day Sanction)	083/084 B	609248

**28. Reason Code: XAN933 - False Info about Resp Rel/Non-citiz. Sponsors Willingness to Supp.**

a. Trigger Condition

- i. This notice generates for the applicable counties when the person was 'Active' in the previous saved EDBC and is now 'Discontinued' on the current EDBC with the reason 'False Info about Resp Rel/Non-citiz. Sponsors Willingness to Supp.'

or

- ii. This notice generates for the applicable counties when the person was 'Pending' and is now 'Denied' on the current EDBC with the reason 'False Info about Resp Rel/Non-citiz. Sponsors Willingness to Supp.'
- b. Person Level Reason
- c. County-specific information:

County	Action	Document Description	Number	Template
Orange	Discontinuance	GR Discontinuance - (90/180 Day Sanction)	083/084 B	609248
Orange	Denial	GR Denial - (90/180 Day Sanction)	115/116 B	609249

**29. Reason Code: XAN934 - False Information about Resp Relative/ Non-citizen Sponsors Income**

- a. Trigger Condition
  - i. This notice generates for the applicable counties when the person was 'Active' in the previous saved EDBC and is now 'Discontinued' on the current EDBC with the reason 'False Information about Resp Relative/ Non-citizen Sponsors Income'.
- b. Person Level Reason
- c. County-specific information:

County	Action	Document Description	Number	Template
Orange	Discontinuance	GR Discontinuance - (90/180 Day Sanction)	083/084 B	609248

**30. Reason Code: XAN935 - False Information about Resp Relative/ Non-citizen Sponsors Property**

- a. Trigger Condition
  - i. This notice generates for the applicable counties when the person was 'Active' in the previous saved EDBC and is now 'Discontinued' on the current EDBC with the reason 'False Information about Resp Relative/ Non-citizen Sponsors Property'.
- b. Person Level Reason
- c. County-specific information:

County	Action	Document Description	Number	Template
Orange	Discontinuance	GR Discontinuance - (90/180 Day Sanction)	083/084 B	609248

**31. Reason Code: XAN936 - False Info about Resp Rel/Non-citizen Sponsors Willingness to Supp.**

- a. Trigger Condition

- i. This notice generates for the applicable counties when the person was 'Active' in the previous saved EDBC and is now 'Discontinued' on the current EDBC with the reason 'False Info about Resp Rel/Non-citizen Sponsors Willingness to Supp.'.
  - or
  - ii. This notice generates for the applicable counties when the person was 'Pending' and is now 'False Info about Resp Rel/Non-citizen Sponsors Willingness to Supp.'.
- b. Person Level Reason
- c. County-specific information:

County	Action	Document Description	Number	Template
Orange	Discontinuance	GR Discontinuance - (90/180 Day Sanction)	083/084 B	609248
Orange	Denial	GR Denial - (90/180 Day Sanction)	115/116 B	609249

**32. Reason Code: XAN941 - Reports a False Place of Residence**

- a. Trigger Condition
- i. This notice generates for the applicable counties when the person was 'Active' in the previous saved EDBC and is now 'Discontinued' on the current EDBC with the reason 'Reports a False Place of Residence'.
- b. Person Level Reason
- c. County-specific information:

County	Action	Document Description	Number	Template
Santa Clara	Discontinuance	GA Discontinuance - Report of False Place of Residence - 3 month POI	GA 067	12013

**33. Reason Code: XAN942 - Client provided fraudulent information**

- a. Trigger Condition
- i. This notice generates for the applicable counties when the person was 'Pending' and is now 'Denied' on the current EDBC with the reason 'Client provided fraudulent information'.
- b. Person Level Reason
- c. County-specific information:

County	Action	Document Description	Number	Template
Contra Costa	Denial	GA Denial - Provided Fraudulent Information - 6 Month POI	244 0	610771

### 2.7.3.2.3 Miscellaneous Parameters

The below miscellaneous parameters will be triggered and sent to the correspondence service based on the reason code triggered from EDBC:

Reason Code	Miscellaneous Parameter Code	Miscellaneous Parameter Description	Format/Example
XAN180 XAN896 XAN986 XAN994 XAN078 XAN178 XAN506	"ST"	The Sanction Type Code. Concatenated if there are multiple.	"STX6   STNA   STNG"

## 2.8 Employable Status Functionality

### 2.8.1 County Admin Detail

#### 2.8.1.1 Overview

A new County Admin Detail page for Employable Status will be created. This page is viewed by the County Administrator to view the list of rules applicable for the Employable Status functionality to their county.

#### 2.8.1.2 Description of Changes

- The Admin page detail for Employable Status will have the below functional categories and its associated flag turned on or off based on the current GA/GR functionality for each County.
- The activate switch Yes/No indicate if that functionality is applicable to the displayed county.
- The functionality is effective dated with begin and end date.
- The rule functionality can be viewed as of a date using the view date.

Rule Name	Alameda	Contra Costa	Fresno	Orange	Placer	Sacramento	San Diego	San Francisco	San Luis Obispo	San Mateo	Santa Barbara	Santa Clara	Santa Cruz	Solano	Sonoma	Tulare	Ventura	Yolo
Employable/Conditionally Employable and not cooperating with Employment Services.	N	N	N	N	Y	N	N	N	N	N	N	N	Y	Y	N	N	N	N

Employable Status-San Francisco.	N	N	N	N	N	N	N	Y	N	N	N	N	N	N	N	N	N	N
Employable Status-Alameda.	Y	N	N	N	N	N	N	N	N	N	N	N	N	N	N	N	N	N
Fail applicant if employable/conditionally employable, not cooperating with ES without good cause.	N	Y	N	N	N	N	N	N	N	N	Y	N	N	N	Y	Y	N	N
Sanction if employable/conditionally employable, not cooperating with ES without good cause.	N	N	N	N	N	N	N	N	Y	N	N	N	N	N	N	N	N	N
Clear sanction > 24 months old and sanction if employable/conditionally employable, not cooperating with ES without good cause.	N	N	N	N	N	N	N	N	N	Y	N	N	N	N	N	N	N	N
Employable Status – Yolo.	N	N	N	N	N	N	N	N	N	N	N	N	N	N	N	N	N	Y
Fail if employable/conditionally employable, not cooperating with ES without good cause.	N	N	N	N	N	N	Y	N	N	N	N	N	N	N	N	N	N	N
Sanction on reapplication within 12 months.	N	N	Y	N	N	N	N	N	N	N	N	N	N	N	N	N	N	N
Not cooperating with employment services.	N	N	N	N	N	N	N	N	N	N	N	N	Y	N	N	N	N	N
Fail Employable Spouse of Indiv that has emp services non-coop sanction and send MAPC to Sanction Indv if Sanction >= 3months during and 1st 3 months sanction in 6 months.	N	N	N	N	N	N	Y	N	N	N	N	N	N	N	N	N	N	N
Employability Determination – Alameda.	Y	N	N	N	N	N	N	N	N	N	N	N	N	N	N	N	N	N

Below is the corresponding CalWIN rule number mapped to CalSAWS rules.

CalWIN Number	CalWIN Rule	CalSAWS Rule
EDX119C002	Employable/Conditionally Employable and not cooperating with Employment Services	Employable/Conditionally Employable and not cooperating with Employment Services.
EDX119C003	Employable Status-San Francisco	Employable Status-San Francisco.
EDX119C004	Employable Status-Alameda	Employable Status-Alameda.
EDX119C005	Fail applicant if employable/conditionally employable, not cooperating with ES without good cause	Fail applicant if employable/conditionally employable, not cooperating with ES without good cause.
EDX119C006	Sanction if employable/conditionally employable, not cooperating with ES without good cause	Sanction if employable/conditionally employable, not cooperating with ES without good cause.
EDX119C007	Clear sanction > 24 months old and sanction if employable/conditionally employable, not cooperating with ES without good cause	Clear sanction > 24 months old and sanction if employable/conditionally employable, not cooperating with ES without good cause.
EDX119C008	Employable Status - Yolo	Employable Status – Yolo.
EDX119C009	Fail if employable/conditionally employable, not cooperating with ES without good cause	Fail if employable/conditionally employable, not cooperating with ES without good cause.
EDX119C017	Sanction on reapplication within 12 mos.	Sanction on reapplication within 12 months.
EDX119C018	Not cooperating with employment services.	Not cooperating with employment services.
EDX119C022	Fail Employable Spouse of Indiv that has Emp Svcs Non Coop Sanction and send MAPC to Scnt indiv if Snt >= 3 mnths dur and 1st 3 mnths snt in 6 mnths	Fail Employable Spouse of Indiv that has emp services non-coop sanction and send MAPC to Sanction Indv if Sanction >= 3months during and 1st 3 months sanction in 6 months.

EDX119C026	Employability Determination – Alameda	Employability Determination – Alameda.
------------	---------------------------------------	--

The following CalWIN rules has been removed for this functionality.

CalWIN Number	CalWIN Description	Reason
EDX119C001	Employable Status-Solano, Orange	The rule is not used in this functionality. This is based on Gainwell notation 'Not in copy book.'
EDX119C010	Fail if not cooperating with ES without good cause	The rule is not used in this functionality. This is based on Gainwell notation 'Not in copy book.'
EDX119C011	Employable Status - Santa Cruz	The rule is not used in this functionality. This is based on Gainwell notation 'Not in copy book.'
EDX119C012	Employable Status-Most counties	The rule is not used in this functionality. This is based on Gainwell notation 'Not in copy book.'
EDX119C013	County does not aid employable /conditionally employable if aided for 3 months in the last 12 months	Not used in the use case
EDX119C014	County does not aid employable/conditionally	Not used in the use case

	employable if aided for 90 days in the last 12 months	
EDX119C015	County does not aid employable/conditionally employable if aided for 4 weeks	Not used in the use case
EDX119C016	Conditionally employable	The rule is not used in this functionality. This is based on Gainwell notation 'Not in copy book.'
EDX119C019	Program applied	Not used in the use case
EDX119C020	GR client is approved for benefits	The rule is not used in this functionality. This is based on Gainwell notation 'Not in copy book.'
EDX119C021	Maintain a 3 month clock for employables if BDOA is the 1st of the month and a 90 day clock for employables if BDOA is not the 1st of the month.	Not used in the use case
EDX119C023	Extend Aid to 6 months when Individual is Employable and in Approved Trade or Technical Schools	Not used in the use case
EDX119C024	County does not aid employable/conditionally employable if aided for 6 months within last 12 months.	Not used in the use case
EDX119C025	Employable Time Clocks Exemption – Alameda	Not used in the use case
EDX119C027	Trigger Employability and Time Limit NOAs for Individual - Alameda	Not used in the use case



EDX119C028	Require new Application for new 12 Month Period	Not used in the use case
EDX119C029	GA 12 month period - Cut off date is 12 months back	Not used in the use case

## 2.8.2 EDBC Changes

### 2.8.2.1 Overview

This section will provide the Eligibility Rules flow for Employable Status that can be filtered for each CalWIN County.

### 2.8.2.2 Description of Change

#### **Employable Status Rules Flow Diagram:**

A Consolidated Rules Flow Visio document will be provided as a separate Attachment in addition to this design Document that will depict the rules for a selected County.

Please refer the [Rules Flow Diagram](#) in the Appendix section on how to open and navigate the Visio diagram.

#### **New Program/Person Status:**

New Program/Person Status Reasons will be added to be used by this Rule Flow. The following reasons will set to the program/person level when the following conditions are met:

1. The new status reason CT73 'Not Cooperating with Employment Services - No Comply' will be set as a person failure reason when all the following conditions are met:
  - a. The individual is either 'Employable' or 'Unemployable'.
  - b. The individual has an active non-compliance record of type 'Employment Services' applicable for the benefit month.
  - c. All the following I or II:
    - I. The following:
      - i. The rule 'Employable/Conditionally Employable and not cooperating with Employment Services.' is active.
      - ii. The rule 'Not cooperating with employment services.' **is active.**
      - iii. There is no status reason for the non-compliance. (This is determined based on the Non compliance reference table.)
    - II. The following:

Commented [PE14]: XAN052

Commented [PE15]: Not created yet – when it gets created then change this

- i. All the following rules are not active.
  - i. 'Employable/Conditionally Employable and not cooperating with Employment Services.'
  - ii. 'Employable Status-San Francisco.'
  - iii. 'Employable Status-Alameda.'
  - iv. 'Fail applicant if employable/conditionally employable, not cooperating with ES without good cause.'
  - v. 'Sanction if employable/conditionally employable, not cooperating with ES without good cause.'
  - vi. 'Clear sanction > 24 months old and sanction if employable/conditionally employable, not cooperating with ES without good cause.'
  - vii. 'Employable Status – Yolo.'
  - viii. 'Fail Employable Spouse of Indiv that has emp services non-coop sanction and send MAPC to Sanction Indv if Sanction >= 3months during and 1st 3 months sanction in 6 months.'
  - ix. 'Fail if employable/conditionally employable, not cooperating with ES without good cause.'
  - ii. The rule 'Sanction on reapplication within 12 months.' is active.
  - iii. The program mode is intake.
  - iv. The individual's BDA is in the benefit month.

Category	Short Description
73	Not Cooperating with Employment Services - No Comply

Commented [PE16]: XAN052

- 2. The new status reason CT73 'Not Cooperating with Employment Services - Seeking Emp' will be set as a person failure reason when all the following conditions are met:
  - a. The individual is either 'Employable' or 'Unemployable'.
  - b. The individual has an active non-compliance record of type 'Employment Services' applicable for the benefit month.
  - c. The rule 'Employable/Conditionally Employable and not cooperating with Employment Services.' is active.
  - d. The rule 'Not cooperating with employment services.' is not active.

Commented [PE17]: XAN053

Category	Short Description
----------	-------------------

73	Not Cooperating with Employment Services - Seeking Emp
----	--

3. The new status reason CT73 'Not Cooperating with Employment Services - No Good Cause' will be set as a person failure reason when all the following conditions are met:
- a. The individual is either 'Employable' or 'Unemployable'.
  - b. The individual has an active non-compliance record of type 'Employment Services' applicable for the benefit month.
  - c. All the following rules are not active.
    - i. 'Employable/Conditionally Employable and not cooperating with Employment Services.'
    - ii. 'Employable Status-San Francisco.'
    - iii. 'Employable Status-Alameda.'
    - iv. 'Fail applicant if employable/conditionally employable, not cooperating with ES without good cause.'
    - v. 'Sanction if employable/conditionally employable, not cooperating with ES without good cause.'
    - vi. 'Clear sanction > 24 months old and sanction if employable/conditionally employable, not cooperating with ES without good cause.'
    - vii. 'Employable Status - Yolo.'
    - viii. 'Fail Employable Spouse of Indiv that has emp services non-coop sanction and send MAPC to Sanction Indv if Sanction >= 3months during and 1st 3 months sanction in 6 months.'
  - d. The rule 'Fail if employable/conditionally employable, not cooperating with ES without good cause.' is active.

Commented [PE18]: XAN054

Category	Short Description
73	Not Cooperating with Employment Services - No Good Cause

4. The new status reason CT73 'Not Cooperating with Emp Serv - Refused to Comply' will be set as a person failure reason when all the following conditions are met:
- a. The individual is either 'Employable' or 'Unemployable'.
  - b. The individual has an active non-compliance record of type 'Employment Services' applicable for the benefit month.
  - c. The rule 'Employable/Conditionally Employable and not cooperating with Employment Services.' is not active.
  - d. Either I or II are true:
    - I. The following:

Commented [PE19]: XAN120

- i. The rule 'Employable Status-San Francisco.' is not active.
- ii. The rule 'Employable Status-Alameda.' is not active.
- iii. The rule 'Fail applicant if employable/conditionally employable, not cooperating with ES without good cause.' is active.
- iv. The program is intake.
- II. The following:
  - i. The rule 'Employable Status-San Francisco.' is active.
  - ii. The sub program type is 'Personal Assisted Employment Services'
  - iii. There is no status reason for the non-compliance. (This is determined based on the RT\_CMPLY)

Category	Short Description
73	Not Cooperating with Emp Serv - Refused to Comply

5. The new status reason CT73 'Non-Coop With Work Project – Attach MAPC Letter' will be set as a display reason when all the following conditions are met:
- a. The individual is either 'Employable' or 'Unemployable'.
  - b. The individual has an active non-compliance record of type 'Employment Services' applicable for the benefit month.
  - c. All the following rules are not active.
    - i. 'Employable/Conditionally Employable and not cooperating with Employment Services.'
    - ii. 'Employable Status-San Francisco.'
    - iii. 'Employable Status-Alameda.'
    - iv. 'Fail applicant if employable/conditionally employable, not cooperating with ES without good cause.'
    - v. 'Sanction if employable/conditionally employable, not cooperating with ES without good cause.'
    - vi. 'Clear sanction > 24 months old and sanction if employable/conditionally employable, not cooperating with ES without good cause.'
    - vii. 'Employable Status – Yolo.'
  - d. The rule 'Fail Employable Spouse of Indiv that has emp services non-coop sanction and send MAPC to Sanction Indv if Sanction >= 3months during and 1st 3 months sanction in 6 months.' is active.
  - e. The individual has a sanction type 'Non-compliance #2' applicable for the benefit month.

Commented [PE20]: XAN270

Category	Short Description
73	Non-Coop With Work Project – Attach MAPC Letter

6. The new status reason CT73 'Non-Coop With Job Training – Attach MAPC Letter' will be set as a display reason when all the following conditions are met:
- The individual is either 'Employable' or 'Unemployable'.
  - The individual has an active non-compliance record of type 'Employment Services' applicable for the benefit month.
  - All the following rules are not active.
    - 'Employable/Conditionally Employable and not cooperating with Employment Services.'
    - 'Employable Status-San Francisco.'
    - 'Employable Status-Alameda.'
    - 'Fail applicant if employable/conditionally employable, not cooperating with ES without good cause.'
    - 'Sanction if employable/conditionally employable, not cooperating with ES without good cause.'
    - 'Clear sanction > 24 months old and sanction if employable/conditionally employable, not cooperating with ES without good cause.'
    - 'Employable Status – Yolo.'
  - The rule 'Fail Employable Spouse of Indiv that has emp services non-coop sanction and send MAPC to Sanction Indv if Sanction >= 3months during and 1st 3 months sanction in 6 months.' is active.
  - The individual has a sanction type 'Non-compliance #2' applicable for the benefit month.

Category	Short Description
73	Non-Coop With Work Project – Attach MAPC Letter

7. The new status reason CT73 'ES Non-Compliance – Individual is an Applicant' will be set as a person failure reason when all the following conditions are met:
- The individual is either 'Employable' or 'Unemployable'.
  - The individual has an active non-compliance record of type 'Employment Services' applicable for the benefit month.
  - All the following rules are not active.

Commented [PE21]: XAN495

- i. 'Employable/Conditionally Employable and not cooperating with Employment Services.'
- ii. 'Employable Status-San Francisco.'
- d. The rule 'Employable Status-Alameda.' is active.
- e. The program mode is intake.

Category	Short Description
73	ES Non-Compliance – Individual is an Applicant

8. The new status reason CT73 '~~Failed to Comply as an Applicant~~' will be set as a person failure reason when all the following conditions are met:

Commented [PE22]: XAN500

- ~~f. The individual is either 'Employable' or 'Unemployable'.~~
- ~~g. The individual has an active non-compliance record of type 'Employment Services' applicable for the benefit month.~~
- ~~h. All the following rules are not active:
 
  - iii. 'Employable/Conditionally Employable and not cooperating with Employment Services.'
  - iv. 'Employable Status-San Francisco.'~~
- ~~i. The rule 'Employable Status-Alameda.' is active.~~
- ~~j. The program mode is not intake.~~
- ~~k. The individual has the non-compliance applicable for the benefit month.~~

Category	Short Description
73	Failed to Comply as an Applicant

9. The new status reason CT73 '~~Not Cooperating with Employment Services – Recipient~~' will be set as a person failure reason when all the following conditions are met:

Commented [PE23]: XAN510

- a. The individual is either 'Employable' or 'Unemployable'.
- b. The individual has an active non-compliance record of type 'Employment Services' applicable for the benefit month.
- c. All the following rules are not active.
  - i. 'Employable/Conditionally Employable and not cooperating with Employment Services.'
  - ii. 'Employable Status-San Francisco.'
  - iii. 'Employable Status-Alameda.'
  - iv. 'Fail applicant if employable/conditionally employable, not cooperating with ES without good cause.'
  - v. 'Sanction if employable/conditionally employable, not cooperating with ES without good cause.'

- vi. 'Clear sanction > 24 months old and sanction if employable/conditionally employable, not cooperating with ES without good cause.'
- vii. 'Employable Status – Yolo.'
- viii. 'Fail Employable Spouse of Indiv that has emp services non-coop sanction and send MAPC to Sanction Indv if Sanction >= 3months during and 1st 3 months sanction in 6 months.'
- ix. 'Fail if employable/conditionally employable, not cooperating with ES without good cause.'
- d. The rule 'Sanction on reapplication within 12 months.' Is active.
- e. The program mode is ongoing.

Category	Short Description
73	Not Cooperating with Employment Services – Recipient

10. The new display-only status reason CT73 'Not Cooperating with the Employment Services - Applicant' will be set as a display-only reason when all the following conditions are met:
- a. The individual is either 'Employable' or 'Unemployable'.
  - b. The individual has an active non-compliance record of type 'Employment Services' applicable for the benefit month.
  - c. All the following rules are not active.
    - i. 'Employable/Conditionally Employable and not cooperating with Employment Services.'
    - ii. 'Employable Status-San Francisco.'
    - iii. 'Employable Status-Alameda.'
    - iv. 'Fail applicant if employable/conditionally employable, not cooperating with ES without good cause.'
    - v. 'Sanction if employable/conditionally employable, not cooperating with ES without good cause.'
    - vi. 'Clear sanction > 24 months old and sanction if employable/conditionally employable, not cooperating with ES without good cause.'
    - vii. 'Employable Status – Yolo.'
    - viii. 'Fail Employable Spouse of Indiv that has emp services non-coop sanction and send MAPC to Sanction Indv if Sanction >= 3months during and 1st 3 months sanction in 6 months.'
    - ix. 'Fail if employable/conditionally employable, not cooperating with ES without good cause.'
  - d. The rule 'Sanction on reapplication within 12 months.' Is active.
  - e. The program mode is intake.

- f. The individual's BDA is not in the benefit month.
- g. The individual is not sanctioned with type "Non Compliance"" within the last 12 months from program application date.

Category	Short Description
73	Not Cooperating with the Employment Services - Applicant

11. The new display-only status reason CT73 'Not Cooperating with Employment Services' will be set as a display-only reason when all the following conditions are met:
- a. The individual is either 'Employable' or 'Unemployable'.
  - b. The individual has an active non-compliance record of type 'Employment Services' applicable for the benefit month.
  - c. All the following rules are not active.
    - i. 'Employable/Conditionally Employable and not cooperating with Employment Services.'
    - ii. 'Employable Status-San Francisco.'
    - iii. 'Employable Status-Alameda.'
  - d. Any of the following I, II, III, or VI:
    - I. All the following:
      - i. The rule 'Fail applicant if employable/conditionally employable, not cooperating with ES without good cause.' is active.
      - ii. The program mode is not intake.
      - iii. The status reason is not found for the corresponding non-compliance reason.
    - II. All the following:
      - i. The rule 'Fail applicant if employable/conditionally employable, not cooperating with ES without good cause.' is not active.
      - ii. One of the following rules is active:
        - 'Sanction if employable/conditionally employable, not cooperating with ES without good cause.'
        - 'Clear sanction > 24 months old and sanction if employable/conditionally employable, not cooperating with ES without good cause.'
        - 'Employable Status - Yolo.'
      - iii. The status reason is not found for the corresponding non-compliance reason.
    - III. All the following:
      - i. All the following rules are not active:



- 'Fail applicant if employable/conditionally employable, not cooperating with ES without good cause.'
  - 'Sanction if employable/conditionally employable, not cooperating with ES without good cause.'
  - 'Clear sanction > 24 months old and sanction if employable/conditionally employable, not cooperating with ES without good cause.'
  - 'Employable Status – Yolo.'
- ii. The rule 'Fail Employable Spouse of Indiv that has emp services non-coop sanction and send MAPC to Sanction Indv if Sanction >= 3months during and 1st 3 months sanction in 6 months.' is active.
- IV. All the following:
- i. All the following rules are not active:
- 'Fail applicant if employable/conditionally employable, not cooperating with ES without good cause.'
  - 'Sanction if employable/conditionally employable, not cooperating with ES without good cause.'
  - 'Clear sanction > 24 months old and sanction if employable/conditionally employable, not cooperating with ES without good cause.'
  - 'Employable Status – Yolo.'
  - 'Fail Employable Spouse of Indiv that has emp services non-coop sanction and send MAPC to Sanction Indv if Sanction >= 3months during and 1st 3 months sanction in 6 months.'
  - 'Fail if employable/conditionally employable, not cooperating with ES without good cause.'
  - 'Sanction on reapplication within 12 months.'
- ii. The status reason is not found for the corresponding non-compliance reason.

Category	Short Description
73	Not Cooperating with Employment Services

12. The new display-only status reason CT73 'ES Non-compliance - 6 month sanction' will be set as a display-only reason when all the following conditions are met:
- a. The individual is either 'Employable' or 'Unemployable'.

- b. The individual has an active non-compliance record of type 'Employment Services' applicable for the benefit month.
- c. All the following rules are not active.
  - i. 'Employable/Conditionally Employable and not cooperating with Employment Services.'
  - ii. 'Employable Status-San Francisco.'
- a. The rule 'Employable Status-Alameda.' is active.
- b. The program mode is ongoing.
- c. The following is not true: The individual's age is greater than 'GAGR Max Age for GA Time Limit. (This is determined in CT 10634)
- d. 'Major Functional Barrier' is true (Major Functional Barrier = 'Y' in Work Registration Detail page)

Category	Short Description
73	ES Non-compliance - 6 month sanction

13. The new display-only status reason CT73 'Age is over 59' will be set as a display-only reason when all the following conditions are met:
- a. The individual is either 'Employable' or 'Unemployable'.
  - b. The individual has an active non-compliance record of type 'Employment Services' applicable for the benefit month.
  - c. All the following rules are not active.
    - i. 'Employable/Conditionally Employable and not cooperating with Employment Services.'
    - ii. 'Employable Status-San Francisco.'
  - a. The rule 'Employable Status-Alameda.' is active.
  - b. The program mode is ongoing.
  - c. The individual's age is greater than 'GAGR Max Age for GA Time Limit'. (This is determined in CT 10634)

Category	Short Description
73	Age is over 59

## 2.8.3 Correspondence

### 2.8.3.1 Overview

This section describes the Notice of Action (NOA) triggers that will be created depending on the resulting EDBC reason code in the previous sections. Notices only trigger from certain reason codes listed in this section.

The reason codes listed in the rule recommendations are formatted as <CalWIN Reason Code> - <CalSAWS EDBC Display Reason>. The trigger condition describes the statuses and reasons in which the notice will trigger for. The county-specific information describes which counties and actions the notices will generate for, as well as the document name and number that will be displayed on the distributed documents page. The template column determines how notices are grouped when generated.

### 2.8.3.2 Description of Change

#### 1. Reason Code: XAN053 - Not Cooperating with Employment Services - Seeking Emp

##### a. Trigger Condition

- i. This notice generates for the applicable counties when the person was 'Pending' and is now 'Denied' on the current EDBC with the reason 'Not Cooperating with Employment Services - Seeking Emp'.

##### b. Person Level Reason

##### c. County-specific information:

County	Action	Document Description	Number	Template
Placer	Denial	Available and Seeking Employment	125-0	608582

#### 2. Reason Code: XAN120 - Not Cooperating with Emp Serv - Refused to Comply

##### a. Trigger Condition

- i. This notice generates for the applicable counties when the program was 'Pending' and is now 'Denied' on the current EDBC with the reason 'Not Cooperating with Emp Serv - Refused to Comply'.
- or
- ii. This notice generates for the applicable counties when the program was 'Pending' and is now 'Active' on the current EDBC with the reason 'Not Cooperating with Emp Serv - Refused to Comply'

##### b. Person Level Reason

##### c. County-specific information:

County	Action	Document Description	Number	Template
Sonoma	Approval	GA Approve recertification	109	12542
Tulare	Denial	GA Denial -Refusal to Comply with Requirements	139-4	12520
Tulare	Denial	GA Denial -Refusal to Comply with Requirements	139-4	12341

**3. Reason Code: XAN270 - Non-coop With Work Project – Attach MAPC letter**

- a. Trigger Condition
  - i. This notice generates for the applicable counties when the person was 'Pending' and is now 'Denied' on the current EDBC with the reason 'Non-coop With Work Project – Attach MAPC letter'.
- b. Person Level Reason
- c. County-specific information:

County	Action	Document Description	Number	Template
San Diego	Discontinuance	GR Disc and Sanction - Non-coop With Work Project	072-0	12726

**4. Reason Code: XAN720 - Non-coop With Job Training – Attach MAPC letter**

- a. Trigger Condition
  - i. This notice generates for the applicable counties when the program was 'Pending' and is now 'Denied' on the current EDBC with the reason 'Non-coop With Job Training – Attach MAPC letter'.
- b. Person Level Reason
- c. County-specific information:

County	Action	Document Description	Number	Template
San Diego	Discontinuance	GR Disc and Sanction - Non-coop With Job Training	071-2	12726

**2.8.3.2.1 Miscellaneous Parameters**

The below miscellaneous parameters will be triggered and sent to the correspondence service based on the reason code triggered from EDBC:

Reason Code	Miscellaneous Parameter Code	Miscellaneous Parameter Description	Format/Example
XAN270 XAN720	"ST"	The Sanction Type Code. Concatenated if there are multiple.	"STX6   STNA   STNG"

**2.8.4 Project Requirements**

DDID 2314	DDID Description	How DDID Requirement Met	Rule Flow diagram
	[Business Rule: {Employable/Conditionally employable and not cooperating with Employment Services} CalSAWS must apply sanction for non-compliance with Employable/Conditionally employable and not cooperating with Employment Services for GA/GR.]	The rule 'Employable/Conditionally Employable and not cooperating with Employment Services.' will meet this requirement.	Set in the Visio Flow chart
	[Business Rule: {Employable Status-San Francisco} CalSAWS must fail individual for non-compliance with employable status program for GA/GR.]	The rule 'Employable Status-San Francisco.' will meet this requirement.	Set in the Visio Flow chart
	[Business Rule: {Employable Status-Alameda} CalSAWS must check for county defined age for compliance with employable status program for GA/GR.]	The rule 'Employable Status-Alameda.' will meet this requirement.	Set in the Visio Flow chart
	[Business Rule: {Fail applicant if employable/conditionally employable, not cooperating with ES without good cause} CalSAWS must fail applicant if employable/conditionally employable, and not cooperating with ES without good cause for employabe status program for GA/GR.]	The rule 'Fail applicant if employable/conditionally employable, not cooperating with ES without good cause.' will meet this requirement.	Set in the Visio Flow chart

DDID 2314	DDID Description	How DDID Requirement Met	Rule Flow diagram
	[Business Rule: {Sanction if employable/conditionally employable, not cooperating with ES without good cause} CalSAWS must apply sanction if employable/conditionally employable, not cooperating with ES without good cause for GA/GR.]	The rule 'Sanction if employable/conditionally employable, not cooperating with ES without good cause.' will meet this requirement.	Set in the Visio Flow chart
	[Business Rule: {Clear sanction > 24 months old and sanction if employable/conditionally employable, not cooperating with ES without good cause} CalSAWS must Clear sanction greater than 24 months old and sanction if employable/conditionally employable, not cooperating with ES without good cause for employable status program for GA/GR.]	The rule 'Clear sanction > 24 months old and sanction if employable/conditionally employable, not cooperating with ES without good cause.' will meet this requirement.	Set in the Visio Flow chart
	[Business Rule: {Employable Status–Yolo} CalSAWS must apply sanction for non-compliance when employable/conditionally employable and non-compliance with Employment Service for GA/GR.]	The rule 'Employable Status – Yolo.' will meet this requirement.	Set in the Visio Flow chart

DDID 2314	DDID Description	How DDID Requirement Met	Rule Flow diagram
	[Business Rule: {Fail if employable/conditionally employable, not cooperating with ES without good cause} CalSAWS must fail individual if employable/conditionally employable, and not cooperating with Employment Service without good cause for GA/GR.]	The rule 'Fail if employable/conditionally employable, not cooperating with ES without good cause.' will meet this requirement.	Set in the Visio Flow chart
	[Business Rule: {Sanction on reapplication within 12 mos.} CalSAWS must apply sanction on reapplication within 12 mnths for GA/GR.]	The rule 'Sanction on reapplication within 12 months.' will meet this requirement.	Set in the Visio Flow chart
	[Business Rule: {Not cooperating with employment services.} CalSAWS must apply sanction for not cooperating with employment services for GA/GR.]	The rule 'Not cooperating with employment services.' will meet this requirement.	Set in the Visio Flow chart

DDID 2314	DDID Description	How DDID Requirement Met	Rule Flow diagram
	[Business Rule: {Fail Employable Spouse of Indiv that has Emp Svcs Non Coop Sanction and send MAPC to Scnt indiv if Snt >= 3 mnths dur and 1st 3 mnths snt in 6 mnths} CalSAWS must fail Employable Spouse of Individual that has Emp Svcs Non Coop Sanction and send MAPC to Sanctioned individual if Sanction is equal to or greater than 3 months duration and 1st 3 months sanction in 6 months for GA/GR.]	The rule 'Fail Employable Spouse of Indiv that has emp services non-coop sanction and send MAPC to Sanction Indv if Sanction >= 3months during and 1st 3 months sanction in 6 months.' will meet this requirement.	Set in the Visio Flow chart
	[Business Rule: {Employability Determination – Alameda} CalSAWS must determine for employability for GA/GR.]	The rule 'Employability Determination – Alameda.' will meet this requirement.	Set in the Visio Flow chart

## 2.9 Batch – Create New Sanction Type Detail Batch

### 2.9.1 Overview

The Sanction Type Detail batch will process each requested sanction type change that are listed on the pending updates section of the Sanction Type Detail page.

### 2.9.2 Description of Change

Create a new batch job that will process each requested sanction type change for a county. The job will do the following:

1. Retrieve the pending sanction type changes from the transact table that were requested by the worker for processing.
2. End date the current sanction type record using the begin date of the transaction record if it currently exists.
3. Insert a new sanction type record with the details of the sanction type transact table.



4. Update the transact record from the table once successfully processed with a Complete status or an Error status if there was an issue processing.

### **2.9.3 Execution Frequency**

Daily (Monday-Saturday).

### **2.9.4 Key Scheduling Dependencies**

This batch job should run before Batch EDBC.

### **2.9.5 Counties Impacted**

GA/GR Automated EDBC/CC Counties.

### **2.9.6 Failure Procedure/Operational Instructions**

Operations staff will evaluate transmission errors and failures and determine the appropriate resolution (i.e., manually retrieving the file from the directory and contacting the external partner if there is an account or password issue, etc.)

### 3 REQUIREMENT

#### 3.1 Migration Requirements

DDID #	REQUIREMENT TEXT	Contractor Assumptions	How Requirement Met
2315	<p>The CONTRACTOR shall update the CalSAWS Software to provide the following GA/GR functionality for the 58 Counties:</p> <p>1) Prorate benefit amounts based upon the Beginning Date of Aid for the GA/GR Program</p> <p>2) Add a hard validation message at EDBC when the GA/GR residency arrival date field on the Residency Detail Page is not completed. The validation message shall only display for those counties that opt into the 15-day residency rule. The CalSAWS Software should not allow the user to run EDBC when this validation occurs. Add a batch exception reason when the case is ran in batch.</p> <p>3) Update the Pre-Screening-Mandatory Substance Use Disorder Recovery Program (MSUDRP) page to allow the 58 Counties to add additional pre-</p>	<p>Requirement 1: Online: Prorate benefit amounts based upon the BDA for the GA/GR Program will be determined by the Eligibility rules in CalSAWS system.</p> <p>Requirement 2: Online: Validation for GA/GR Residency arrival date is included on the GA/GR Request page</p> <p>Eligibility: Pre-EDBC Validation rule to check for Residency Batch/Interfaces - Batch Programs: Add new batch Skip logic for null arrival date</p> <p>Requirement 3: Online: a. The questions per county must be defined at the time of design and by default, the LA questions shall be used. b. The configuration of the questions for the MSUDRP Pre-Screening page will be through a code table on the back end of the application.</p>	<p>1. Add Eligibility functionality for Employment Services and creating sanctions.</p> <p>2. Add all the required Data Collection elements to implement the Employment Services and sanction functionalities for the new solution</p> <p>3. Create new Admin Summary and Detail pages that can be accessed in Admin tools by the County Admin staff</p> <p>4. A new set of Admin detail pages, Rules, Batch and NOA triggers will be added for the below Non-Financial rules.</p> <p>1. Employable Status</p>

DDID #	REQUIREMENT TEXT	Contractor Assumptions	How Requirement Met
	<p>screening questions based on each of the 58 Counties GA/GR eligibility rules. The CalSAWS Software shall only display the Pre-Screening questions based on the county of the logged in user.</p> <p>4) Add the ability to display prior GA/GR aid received in other counties within the CalSAWS Software (sanctions, Unemployable, Employable status, BDA, reapplication within a 12-month period and their time on aid in GR). Note: The requirement is contingent upon county agreement and legal review</p> <p>5) Create an automatic task when a participant has applied for SSI for the GA/GR program. The task shall be customizable by county and all 58 Counties shall have the ability to opt in/opt out of the task</p> <p>6) Add the ability to issue a GA/GR need or supplement prior to approving the GR program (i.e. immediate need).</p> <p>7) Add the ability to determine eligibility for</p>	<p>Batch/Interfaces - Batch Programs: No batch Skip logic for MSUDRP</p> <p>Requirement 4: TBD</p> <p>Requirement 5: Online: The trigger for the SSI application task will be from the SSI/SSP Page. It will be controlled based on the automated action page which will be part of the unified task solution.</p> <p>Batch/Interfaces - Batch Programs: It will be controlled based on the automated action page which will be part of the unified task solution.</p> <p>Requirement 6: Online: There will be a new GR Immediate Need program in order to segment the logic for County and State immediate Need Requirements Eligibility: A New GR Immediate Need Rules and EDBC Summary page will be developed to address this requirement. Correspondence: Add NOA call to DXC service in template repository for</p>	

DDID #	REQUIREMENT TEXT	Contractor Assumptions	How Requirement Met
	<p>GA/GR aid paid pending based on the eligibility rules of each of the 58 Counties.</p> <p>8) Add the ability to allow each county to determine the income multiplier based on each of the 58 Counties GA/GR eligibility rules.</p> <p>9) Add a verification field on the GR Work Requirement page when a work requirement type has been selected. If the verification field is left pending it shall populate on the county specific verification checklist for GA/GR. This functionality for the 58 Counties shall be opt in/out.</p> <p>10) Create an automated task when the vendor for GA/GR is no longer going to get paid based on the Money Management Detail page end month. This functionality will be based on each counties GA/GR program rules</p> <p>11) Add GA/GR specific page(s) to capture physical and mental disability details as it relates to GA/GR</p>	<p>Immediate Need. As per current logic, there is no known NOA in CalWIN for Immediate Need.</p> <p>Fiscal:</p> <p>Changes for deducting Immediate Need grant.</p> <p>1. The Functionality for new GA/GR Immediate Need Program would only be available to 18 CalWIN Counties at migration. Therefore, no changes are required for LA County or 39 CIV Counties Auditor Controller Process/files.</p> <p>2. No Updates Required to 18 CalWIN Counties Warrant Templates.</p> <p>3. No Updates Required to CIV or LA County Warrant Templates.</p> <p>4. The System will not Suggest Grant Reductions towards a recovery account associated to GA/GR Immediate Need Program. Those Recovery Accounts will be marked as Terminated/Suspended on the night they are created.</p> <p>Requirement 8:</p> <p>Eligibility:</p> <p>The income multiplier must be defined by county at the time of design and will be implemented in the CalSAWS code tables. This cannot be modified through the County Admin</p>	

DDID #	REQUIREMENT TEXT	Contractor Assumptions	How Requirement Met
	<p>assessment screening. The new page(s) shall be controlled via security to allow the 58 counties to opt in/out. NOTE: Page(s) should function similar to the MSDURP Assessment page.</p> <p>12) Add the ability to automatically create a CalFresh CFET record when the customer is already participating in GA/GR for reporting purposes. The CalSAWS Software should not have the user enter a CFET record when GA/GR exists. The 58 Counties must have the ability to opt in/out of this functionality</p> <p>13) Update all GA/GR related supportive services need types on the Needs List and Need Detail pages when the category of GROW is selected to be inclusive of all 58 counties.</p> <p>14) Auto create and register a GA/GR ES program for employable individuals when there is a GA/GR/CF combo case when a county does not have CFET program active in their county. This functionality shall be</p>	<p>Auto creation of CFET and ESP will be handled in CalSAWS Eligibility Authorization logic</p> <p>Requirement 9: Online: The verification field will be consistent across the page for all counties. The rules will determine if the value is used or not based on county</p> <p>Requirement 10: Online: The automated task on the Money Management page shall be part of the unified task solution.</p> <p>Batch/Interfaces - Batch Programs: Batch will be using task management solution for all task creation.</p> <p>Requirement 11: Online: The new page will be available for all people with the appropriate security.</p> <p>Requirement 12, 14 and 15: Eligibility Auto Creation of CFET and/or GA-GR Employment Service program will be handled as part of CalSAWS Authorization logic.</p>	

DDID #	REQUIREMENT TEXT	Contractor Assumptions	How Requirement Met
	<p>made configurable for counties to opt in or out.</p> <p>15) Auto create and register a GA/GR ES program for employable individuals who are on a GA/GR program only. This functionality shall be made configurable for counties to opt in or out</p> <p>16) Add additional non-compliance types for GA/GR on the GA/GR Non-Compliance page. The Non-Compliance types shall be specific to each of the 58 Counties GA/GR policy rules</p> <p>17) Migrate the existing C-IV GA/GR Functionality into the CalSAWS Software</p>	<p>Requirement 12: Batch/Interfaces - Batch Programs: Add the ability to automatically create a CalFresh CFET record through batch when the customer is already participating in GA/GR for reporting purposes</p> <p>Requirement 13: Fiscal: All existing need types at point of migration will be added to CalSAWS</p> <p>Requirement 14/15: Batch/Interfaces - Batch Programs: Automatic new Employment service program creation for GA/GR/CR combo case through batch</p> <p>Requirement 16: Online: a. The Non-Compliance Detail page shall show different values and fields based on the new GR program for CalWIN Solution type selected. b. Existing CalWIN Rules for new eligibility non-compliance types will be developed in CORE CalSAWS system.</p> <p>Batch/Interfaces - Batch Programs:</p>	

DDID #	REQUIREMENT TEXT	Contractor Assumptions	How Requirement Met
		Add new non-compliance category to existing non-compliance sweeps.  Requirement 17: The effort to port the C-IV solution is part of SCR CA 201377	

#### 4 MIGRATION IMPACTS

---

General Assistance/General Relief functionality will be implemented as a new program for the 57 counties excluding Los Angeles county. Los Angeles GA/GR functionality will not be modified.

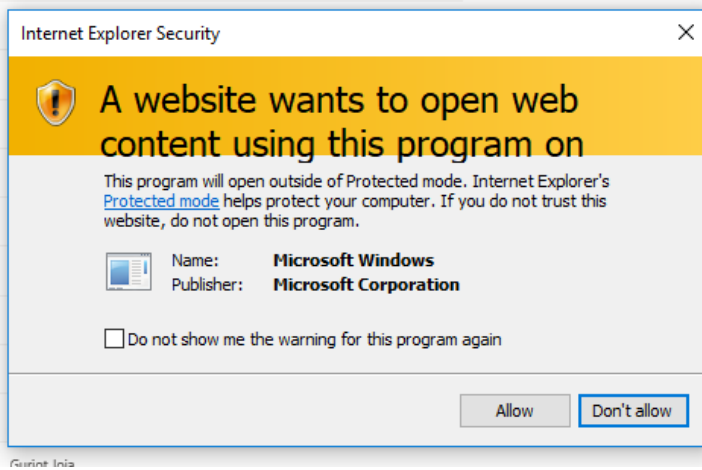
#### 5 APPENDIX

---

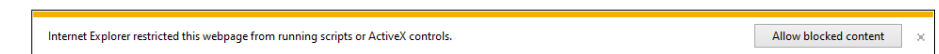
##### 5.1 Rules Flow Diagram

[Viewing Visio Document in Internet Explorer](#)

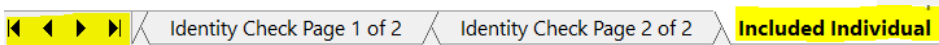
1. This is applicable for Laptops/Desktops that do not have Microsoft Visio software installed.
2. Once you double click the attachment or right click and open with Internet Explorer the Visio will open in internet explorer.
3. \*If opening the Visio file from the SharePoint link the Visio file will need to be downloaded first then open with the downloaded file with internet explorer.
4. The following prompt will appear if opening the downloaded Visio file.



5. Click 'Allow' to open the file on Internet Explorer.
6. The internet Explorer will open with the below pop up in the bottom of the page

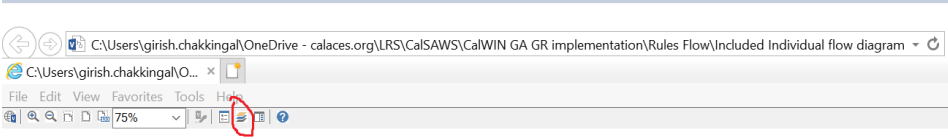


7. Click Allow Blocked Content.
8. Once the Visio opens in Internet Explorer, select the tab at the bottom and navigate using the buttons highlighted below for the appropriate rules (in this case Included Individual)

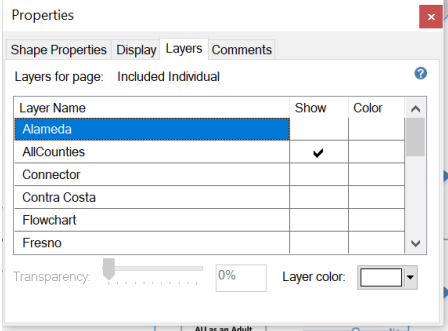




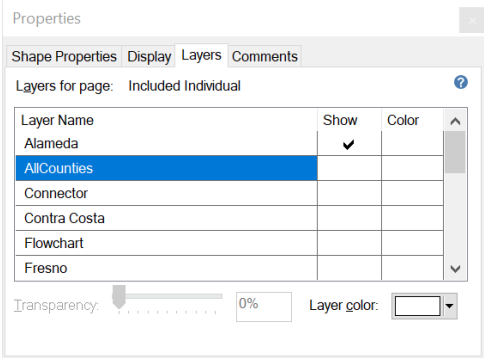
9. Click the layer icon circled in red color below



10. Once the layers button is clicked the Properties box will pop up.



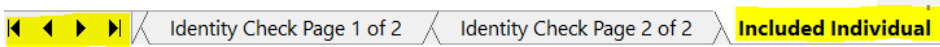
11. Then click the county name that is applicable to you, in this case Alameda



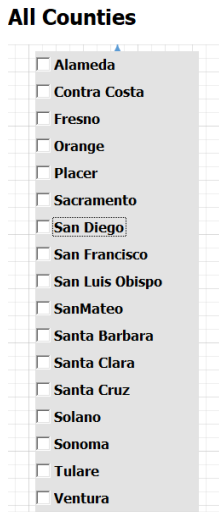
12. Once you select Alameda and close the properties pop up (by clicking the x button at top right corner like closing a tab or window) the flow diagram will show only the rules /functionalities applicable to Alameda.

#### Viewing Visio Document in Microsoft Visio

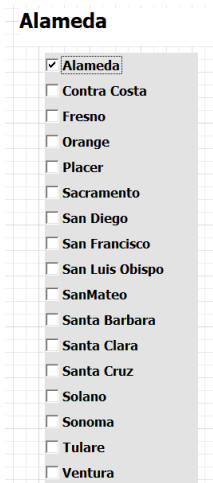
1. This is applicable for Laptops/Desktops that do have Microsoft Visio software installed
2. Once you double click the attachment or right click and open with Visio then it will open in Microsoft Visio
3. Once the Visio opens in Internet Explorer, select the tab at the bottom and navigate using the buttons highlighted below for the appropriate rules (in this case Included Individual)



4. On the right side of the flow diagram the counties names will be displayed as shown below



5. Then click the county name that is applicable to you, in this case Alameda as shown below



The image shows a dropdown menu titled "Alameda" with a list of counties. The "Alameda" option is selected and highlighted. The other options are: Contra Costa, Fresno, Orange, Placer, Sacramento, San Diego, San Francisco, San Luis Obispo, SanMateo, Santa Barbara, Santa Clara, Santa Cruz, Solano, Sonoma, Tulare, and Ventura.

6. Once you select Alameda the flow diagram will show only the rules /functionalities applicable to Alameda.

## 5.2 Reference Table

Reference table for CT73 (Program status reason) and corresponding status reason in this design document. This table shows the values for the new columns added.

- a. Key:
  - i. GR Priority
    - 01. The lower the number the higher the priority
  - ii. GR Program Role
    - 01. FE – This indicator means the status reason will change the person role to FRE - 'Financially Responsible – Excluded'
    - 02. FI – This indicator means this status reason will change the person role to FRI 'Financially Responsible – Included'
    - 03. MM – This indicator means this status reason will change the person role to MMO 'Medi-Cal Member Only'
    - 04. UP – This indicator means this status reason will change the person role to UP 'Unaided Person'
  - iii. GR Close Person

- 01. CanCloseBoth – Indicator means this status reason can close both person and program level.
- 02. Y – indicator means this status reason can close the person.
- iv. GR Close Program
  - 01. CanCloseBoth – Indicator means this status reason can close both person and program level.
  - 02. Y – Indicator means this status reason can close the program.
- v. General Relief
  - 01. Y-Indicator means this status reason will be applicable for CalWINs General Relief Program

CalWIN Status	GR Priority	CalSAWs Status (Status Reason)	Set by Eligibility	GA/GR Program Role	GA/GR Close Person	GA/GR Close Program	General Relief	Use Case
XAN004		Indv is Prev Sanctioned and Still Not Complying			Y		Y	Common Routine Sanction
XAN078		Indv is Within the Sanction Period			Y		Y	Common Routine Sanction
XAN178		Another Counties Sanction Entered by the Worker			Y	Y	Y	Common Routine Sanction
XAN180		CalWORKs Sanction is Applied - Fail Case/Indv			Y		Y	Common Routine Sanction
XAN506		Indv Received 3 Months of Time-Limited GA Within the Last 12 Months	Y				Y	Common Routine Sanction
XAN517		Individual is Under CalWORKs Drug Felony Sanction			Y		Y	Common Routine Sanction
XAN809		In POI for CalWORKs or RCA			Y		Y	Common Routine Sanction

XAN889		Serving a Previous Sanction			Y		Y	Common Routine Sanction
XAN896		Previously Committed Fraud	Y				Y	Common Routine Sanction
XAN919		Committed an Act of Violence /Vandalism	Y				Y	Common Routine Sanction
XAN986		Applicant is Serving a 90-Day Disqualification Period	Y				Y	Common Routine Sanction
XAN994		Existing Sanc. for Failure to Comply with Work Project and/or Emp Req	Y				Y	Common Routine Sanction
XAN052		Not Cooperating with Employment Services - No Comply			Y		Y	Employable Status
XAN053		Not Cooperating with Employment Services - Seeking Emp			Y		Y	Employable Status
XAN054		Not Cooperating with Employment Services - No Good Cause			Y		Y	Employable Status
XAN120		Not Cooperating with Emp Serv - Refused to Comply			Y		Y	Employable Status
XAN870		Applied for and/or Received GR in			Y		Y	Sanction Reference Table

		Two or More Jurisdictions						
XAN871		Applied for and/or Received GR Using a False Identity and/or SSN			Y		Y	Sanction Reference Table
XAN872		Knowingly Accepted or Negotiated GR Benefits			Y		Y	Sanction Reference Table
XAN873		Failed to Report Application For or Receipt of Income			Y		Y	Sanction Reference Table
XAN874		Failed to Report Anticipated Income			Y		Y	Sanction Reference Table
XAN875		Failed to Report Ownership of Property			Y		Y	Sanction Reference Table
XAN876		Falsified Incapacity Documentation			Y		Y	Sanction Reference Table
XAN877		Failed to Report and/or Apply for All Persons in GR Economic Unit			Y		Y	Sanction Reference Table
XAN878		False Info Abt Rel/Non-citiz. Sponsor s Inc or Prop or Supp.			Y		Y	Sanction Reference Table
XAN879		False Evidence or Info Abt Res of the GR Economic Unit			Y		Y	Sanction Reference Table
XAN880		Failed to Cooperate with			Y		Y	Sanction Reference Table

		Appt and Investigation						
XAN881		False Info Provided On GR App and/or Statement of Facts			Y		Y	Sanction Reference Table
XAN882		Committed an Act of Violence or Vandalism			Y		Y	Sanction Reference Table
XAN883		Provided County Fraudulent Docs or Not Provided Comp Info			Y		Y	Sanction Reference Table
XAN884		Convicted of Welfare Fraud			Y		Y	Sanction Reference Table
XAN885		Fails to Report all Facts			Y		Y	Sanction Reference Table
XAN886		Cashing Duplicate Warrant			Y		Y	Sanction Reference Table
XAN887		Receiving a Lump Sum			Y		Y	Sanction Reference Table
XAN888		Serving a Fraud Sanction			Y		Y	Sanction Reference Table
XAN889		Serving a Previous Sanction			Y		Y	Sanction Reference Table
XAN890		Did not Provide Proof of Current Status of SSI/SSP App			Y		Y	Sanction Reference Table
XAN896		Previously Committed Fraud			Y		Y	Sanction Reference Table

XAN931		False Evidence about Resp Relative/ Non-citizen Sponsors Income			Y		Y	Sanction Reference Table
XAN932		False Evidence about Resp Relative/ Non-citizen Sponsors Property			Y		Y	Sanction Reference Table
XAN933		False Info about Resp Rel/Non-citiz. Sponsors Willingness to Supp.			Y		Y	Sanction Reference Table
XAN934		False Information about Resp Relative/ Non-citizen Sponsors Income			Y		Y	Sanction Reference Table
XAN935		False Information about Resp Relative/ Non-citizen Sponsors Property			Y		Y	Sanction Reference Table
XAN936		False Info about Resp Rel/Non-citizen Sponsors Willingness to Supp.			Y		Y	Sanction Reference Table
XAN939		Under a Fraud Sanction from Receiving GA			Y		Y	Sanction Reference Table
XAN940		Provided Apparent Fraudulent Documents			Y		Y	Sanction Reference Table



XAN941		Reports a False Place of Residence			Y		Y	Sanction Reference Table
XAN942		Client provided fraudulent information			Y		Y	Sanction Reference Table
XAN056		Not Cooperating with Employment Services					Y	Employable Status
XAN511		Not Cooperating with the Employment Services - Applicant					Y	Employable Status