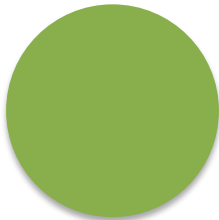


CalSAWS | WCDS SUBCOMMITTEE MEETING  
AGENDA PACKAGE

Friday, November 13, 2019  
3:00 P.M. – 5:00 P.M.

Library Galleria  
East Room  
828 I Street  
Sacramento, California 95814



# Agenda

1. Call Meeting to Order
2. Public Opportunity to speak on items NOT on the Agenda. Public comments are limited to no more than three minutes per speaker, except that a speaker using a translator shall be allowed up to six minutes.

Note: The public may also speak on any Item ON the Agenda by waiting until that item is read, then requesting recognition from the Chair to speak.

3. Roll Call and Confirmation of Quorum
- *See supplemental document for full agenda.*



# Action Items

---

- 
4. Approval of the Minutes of the:
    - a. August 9, 2019 WCDS Subcommittee

*\*See handout for draft meeting minutes.*

---



# Discussion Items

---



## 5. Contract Reassignments Status

- a. Final signed documents for  
CSAC, DXC Technology, Infosys
- 





## 6. WCDS Subcommittee Future Meetings

---

# WCDS Subcommittee Future Meetings

Month	CWDA	WCDS Subcommittee	CalSAWS JPA Board
November 2019	November 15, 2019	November 13, 2019 Library Galleria	November 15, 2019 Library Galleria
December 2019	No Meeting	No Meeting	December 13, 2019 Conference Call
January 2020	January 10, 2020	January 10, 2020 Library Galleria	January 24, 2020 General Membership Webinar
February 2020	February 14, 2020	February 12, 2020 <b>Save the Date</b>	February 14, 2020 Library Galleria
March 2020	March 13, 2020	March 13, 2020 Library Galleria	March 27, 2020 Southern Ca
April 2020	April 10, 2020	TBD	April 10, 2020 Library Galleria
May 2020	May 8, 2020	May 8, 2020 Library Galleria	May 29, 2020 Conference Call
June 2020	June 12, 2020	June 12, 2020 Library Galleria	June 24-26 2020 CalSAWS Conference Location TBD
July 2020	No Meeting	No Meeting	
August 2020	August 14, 2020	August 14, 2020 Library Galleria	
September 2020	September 11, 2020	September 11, 2020 Library Galleria	
November 2020	November 13, 2020	November 13, 2020 Library Galleria	





## 7. Draft WCDS Subcommittee Charter

- a. Review and discuss next steps



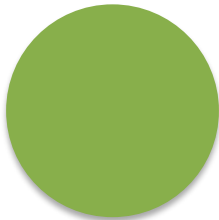
# Draft WCDS Subcommittee Charter

- a. Review and discuss
  - b. Next Steps – Provide comments to Stacey Drohan @ [Stacey.Drohan@CalWIN.org](mailto:Stacey.Drohan@CalWIN.org) by December 13, 2019.  
Approve Charter at January 10, 2020 Subcommittee meeting
- 
- *See handout for Charter.*



## 8. CalWIN Financial Updates

- a. County support staff for DD&I



# CalWIN Financial Update

## Overview

CalSAWS DD&I and  
Premise for 58  
Counties

(OCAT & Undocumented 19-25)

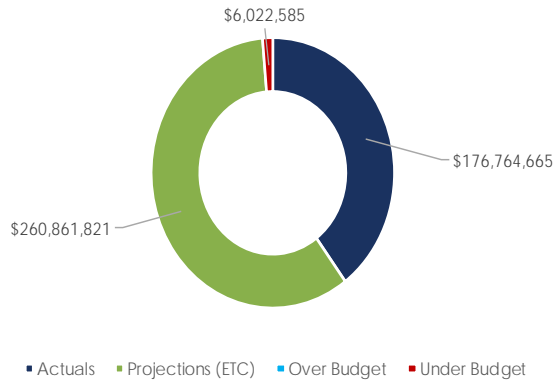
CalWIN M&O and  
Premise for 18  
Counties

C-IV M&O and  
Premise for 39  
Counties

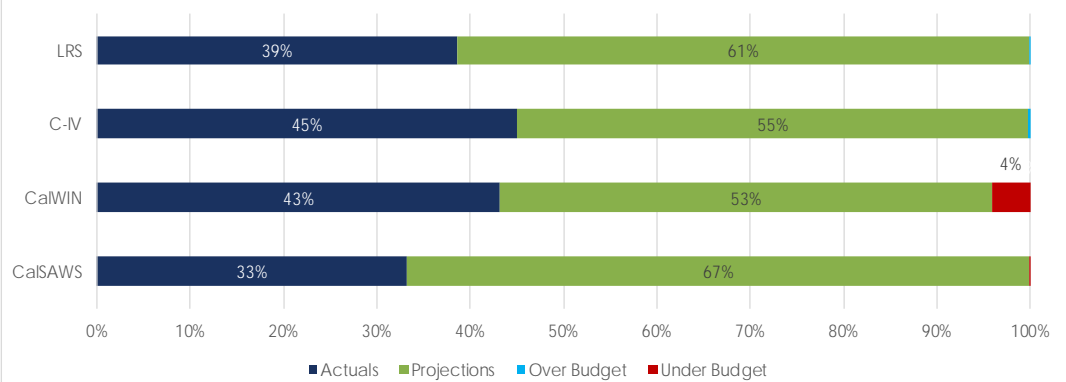
LRS M&O and Premise  
for 1 County

- 1 Actuals to Date  
Based on Vendor Invoices & County Claims
- 2 Projections (Estimates to Complete)  
Estimated Costs for Future Months
- 3 Estimate at Completion (EAC)  
Actual Costs Plus Estimated
- 4 Total Allocation/Budget  
Amount Allocated by Line Item for the Approved Budget
- 5 Balance  
Difference Between EAC and Budget  
Positive balance is under budget  
Negative balance is over budget
- 6 % Expended to Date (Actuals)  
Percent of Actuals to Date Divided by the Budget
- 7 % EAC to Budget  
Percent of EAC Divided by the Budget

Total Actuals & Projections



% Expended to Date



Category	Actuals to Date <sup>1</sup>	Projections (ETC)	EAC	Total Allocation (Budget)	Balance + Under / (-Over)	% Expended to Date	% EAC to Budget	Notes
<b>CalSAWS</b>	<b>\$43,259,726</b>	<b>\$86,879,044</b>	<b>\$130,138,770</b>	<b>\$130,221,941</b>	<b>\$83,171</b>	<b>33.2%</b>	<b>99.9%</b>	
DD&I App. Dev.	\$7,745,327	\$12,111,759	\$19,857,086	\$19,857,086	\$0	39.0%	100.0%	Includes only the allocated portion of funding
DD&I Non-App. Dev.	\$28,529,746	\$45,352,460	\$73,882,206	\$73,882,206	\$0	38.6%	100.0%	Includes only the allocated portion of funding
DD&I Training	\$2,985,839	\$600,052	\$3,585,891	\$3,585,891	\$0	83.3%	100.0%	Includes only the allocated portion of funding
DD&I GA/GR	\$0	\$0	\$0	\$0	\$0	0.0%	0.0%	
DD&I Procurement	\$417,791	\$252,045	\$669,836	\$669,836	\$0	62.4%	100.0%	Includes only the allocated portion of funding
CalSAWS M&O	\$240,356	\$1,959,661	\$2,200,017	\$2,200,050	\$33	10.9%	100.0%	
CalSAWS Premise	\$3,340,668	\$26,603,067	\$29,943,735	\$30,026,872	\$83,137	11.1%	99.7%	Ocat
<b>CalWIN M&amp;O</b>	<b>\$52,780,483</b>	<b>\$64,380,920</b>	<b>\$117,161,402</b>	<b>\$122,172,430</b>	<b>\$5,011,028</b>	<b>43.2%</b>	<b>95.9%</b>	
CalWIN M&O	\$45,515,411	\$49,423,470	\$94,938,881	\$94,938,881	\$0	47.9%	100.0%	
CalHEERS Interface	\$3,370,578	\$4,455,557	\$7,826,135	\$13,326,096	\$5,499,961	25.3%	58.7%	Qualified system changes are limited
CalHEERS CSCN	\$751,968	\$1,010,771	\$1,762,739	\$1,856,497	\$93,758	40.5%	94.9%	Potential savings QA
CalWIN Premise	\$3,142,526	\$9,491,122	\$12,633,648	\$12,050,956	(\$582,692)	26.1%	104.8%	Pending funding approval in the January Budget (multiple premise)
<b>C-IV M&amp;O</b>	<b>\$49,946,105</b>	<b>\$60,737,809</b>	<b>\$110,683,914</b>	<b>\$110,461,162</b>	<b>(\$222,752)</b>	<b>45.2%</b>	<b>100.2%</b>	
C-IV M&O	\$43,497,492	\$43,268,730	\$86,766,222	\$87,351,573	\$585,351	49.8%	99.3%	QA, OTECH less than planned
CalHEERS Interface	\$2,977,876	\$8,112,878	\$11,090,754	\$11,090,754	\$0	26.9%	100.0%	
Covered CA CSC	\$1,460,056	\$2,395,580	\$3,855,636	\$3,855,636	\$0	37.9%	100.0%	
C-IV Premise	\$2,010,681	\$6,960,621	\$8,971,302	\$8,163,199	(\$808,103)	24.6%	109.9%	Pending funding approval in the January Budget (multiple premise)
<b>LRS M&amp;O</b>	<b>\$30,778,351</b>	<b>\$48,864,048</b>	<b>\$79,642,399</b>	<b>\$79,543,538</b>	<b>\$1,151,139</b>	<b>38.7%</b>	<b>100.1%</b>	
LRS M&O	\$27,602,651	\$38,356,381	\$65,959,032	\$66,486,420	\$527,388	41.5%	99.2%	Consortium Staff unallocated
CalHEERS Interface	\$998,412	\$4,299,960	\$5,298,372	\$5,298,372	\$0	18.8%	100.0%	
LRS Premise	\$2,177,288	\$6,207,707	\$8,384,995	\$7,758,746	(\$626,249)	28.1%	108.1%	Pending funding approval in the January Budget (multiple premise)
Cloud Enablement	\$151,507	\$215,633	\$367,140	\$1,617,140	\$1,250,000	9.4%	22.7%	Proof of Concept ended in SFY 18/19, includes final invoice payments
<b>Total</b>	<b>\$176,764,665</b>	<b>\$260,861,821</b>	<b>\$437,626,486</b>	<b>\$442,399,071</b>	<b>\$6,022,585</b>	<b>40.0%</b>	<b>98.9%</b>	

<sup>1</sup>July-Sept Actuals (Claims) and Partial Actuals for October & November (Invoices)

# CalWIN Financial Update

## Consortium Personnel

### CalSAWS | SFY 2019/20 CONSORTIUM PERSONNEL BUDGET

CATEGORY	Actuals to Date	Projections (ETC)	EAC	Total Allocation (Budget)	BALANCE +Under / (-Over)	% Expended to Date	% EAC to Budget	Notes
<b>CalSAWS DD&amp;I</b>	<b>\$2,249,452</b>	<b>\$8,484,018</b>	<b>\$10,733,470</b>	<b>\$10,733,470</b>	<b>\$0</b>	<b>21.0%</b>	<b>100.0%</b>	
Consortium Personnel - County <sup>1</sup>	\$275,801	\$3,004,140	\$3,279,941	\$3,279,941	\$0	8.4%	100.0%	Includes only the allocated portion of funding
Consortium Personnel - Contractor <sup>2</sup>	\$1,973,651	\$5,479,878	\$7,453,529	\$7,453,529	\$0	26.5%	100.0%	Includes only the allocated portion of funding
<b>CalWIN M&amp;O</b>	<b>\$1,668,150</b>	<b>\$2,841,665</b>	<b>\$4,509,815</b>	<b>\$4,509,815</b>	<b>\$0</b>	<b>37.0%</b>	<b>100.0%</b>	
Consortium Personnel - County <sup>1</sup>	\$1,356,236	\$2,788,751	\$4,144,987	\$4,144,987	\$0	32.7%	100.0%	
Consortium Personnel - Contractor <sup>2</sup>	\$311,914	\$52,914	\$364,828	\$364,828	\$0	85.5%	100.0%	
<b>C-IV M&amp;O</b>	<b>\$2,386,915</b>	<b>\$1,841,585</b>	<b>\$4,228,500</b>	<b>\$4,228,500</b>	<b>\$0</b>	<b>56.4%</b>	<b>100.0%</b>	
Consortium Personnel - County	\$1,194,193	\$1,307,038	\$2,501,231	\$2,501,231	\$0	47.7%	100.0%	
Consortium Personnel - Contractor <sup>2</sup>	\$1,192,722	\$534,547	\$1,727,269	\$1,727,269	\$0	69.1%	100.0%	
<b>LRS M&amp;O</b>	<b>\$6,255,763</b>	<b>\$6,590,105</b>	<b>\$12,845,868</b>	<b>\$13,373,256</b>	<b>\$527,388</b>	<b>46.8%</b>	<b>96.1%</b>	
Consortium Personnel - County	\$6,255,763	\$6,590,105	\$12,845,868	\$13,373,256	\$527,388	46.8%	96.1%	
Consortium Personnel - Contractor <sup>2</sup>	\$0	\$0	\$0	\$0	\$0	0.0%	0.0%	
<b>Premise</b>	<b>\$133,085</b>	<b>\$704,392</b>	<b>\$837,477</b>	<b>\$892,611</b>	<b>\$55,134</b>	<b>14.9%</b>	<b>93.8%</b>	
Consortium Personnel - County	\$93,099	\$635,634	\$728,733	\$783,867	\$55,134	11.9%	93.0%	SB 1341
Consortium Personnel - Contractor <sup>2</sup>	\$39,986	\$68,758	\$108,744	\$108,744	\$0	36.8%	100.0%	
<b>Total</b>	<b>\$12,693,365</b>	<b>\$20,461,765</b>	<b>\$33,155,130</b>	<b>\$33,737,652</b>	<b>\$582,522</b>	<b>37.6%</b>	<b>98.3%</b>	

<sup>1</sup>Includes only Consortium Staff, does not include County Support Staff

<sup>2</sup>Contractor Staff includes RGS, CSAC, and First Data Staff Augmentation (FTE counts to be added)

# CalWIN Financial Update

## Change Budget

### CalSAWS | SFY 2019/20 CHANGE BUDGET (APPLICATION MAINTENANCE / M&E HOURS)

Change Budget Category	Actuals to Date	Projections (ETC)	EAC	Total Allocation (Budget)	BALANCE +Under / (-Over)	% Expended to Date	% EAC to Budget	Notes
<b>CalSAWS</b>	<b>\$2,408,144</b>	<b>\$3,786,480</b>	<b>\$6,194,624</b>	<b>\$6,194,624</b>	<b>\$0</b>	<b>38.9%</b>	<b>100.0%</b>	
CalSAWS Premise	\$2,408,144	\$3,786,480	\$6,194,624	\$6,194,624	\$0	38.9%	100.0%	
<b>CalWIN M&amp;O</b>	<b>\$9,979,560</b>	<b>\$18,007,413</b>	<b>\$27,986,973</b>	<b>\$33,697,446</b>	<b>\$5,710,473</b>	<b>29.6%</b>	<b>83.1%</b>	
CalWIN M&O	\$5,935,543	\$7,740,873	\$13,676,416	\$13,676,416	\$0	43.4%	100.0%	
CalHEERS Interface Change Budget	\$983,557	\$1,800,000	\$2,783,557	\$8,283,518	\$5,499,961	11.9%	33.6%	Qualified system changes are limited
CalHEERS CSCN Change Budget	\$31,251	\$124,999	\$156,250	\$250,008	\$93,758	12.5%	62.5%	
CalWIN Premise	\$3,029,209	\$8,341,541	\$11,370,750	\$11,487,504	\$116,754	26.4%	99.0%	Pending funding approval in the January Budget (multiple premise)
<b>C-IV M&amp;O</b>	<b>\$13,944,219</b>	<b>\$19,762,638</b>	<b>\$33,706,857</b>	<b>\$33,216,845</b>	<b>(\$490,012)</b>	<b>42.0%</b>	<b>101.5%</b>	
C-IV M&O	\$11,167,865	\$8,170,937	\$19,338,802	\$19,338,802	\$0	57.7%	100.0%	
CalHEERS Interface Change Budget	\$683,369	\$4,685,386	\$5,368,755	\$5,368,755	\$0	12.7%	100.0%	
Covered CA CSC Change Budget	\$186,878	\$506,626	\$693,504	\$693,504	\$0	26.9%	100.0%	
C-IV Premise	\$1,906,107	\$6,399,689	\$8,305,796	\$7,815,784	(\$490,012)	24.4%	106.3%	Pending funding approval in the January Budget (multiple premise)
<b>LRS M&amp;O</b>	<b>\$7,492,676</b>	<b>\$14,883,016</b>	<b>\$22,375,692</b>	<b>\$22,411,115</b>	<b>\$35,423</b>	<b>33.4%</b>	<b>99.8%</b>	
LRS M&E	\$5,116,634	\$5,995,366	\$11,112,000	\$11,112,000	\$0	46.0%	100.0%	
CalHEERS Interface Change Budget	\$267,612	\$3,276,840	\$3,544,452	\$3,544,452	\$0	7.6%	100.0%	
LRS Premise	\$2,108,430	\$5,610,810	\$7,719,240	\$7,754,663	\$35,423	27.2%	99.5%	Pending funding approval in the January Budget (multiple premise)
<b>TOTAL</b>	<b>\$33,824,599</b>	<b>\$56,439,547</b>	<b>\$90,264,146</b>	<b>\$95,520,030</b>	<b>\$5,255,884</b>	<b>35.4%</b>	<b>94.5%</b>	

Note: Includes 8,000 hours/month for M&O per system, plus premise hours.

# CalWIN Financial Update

## Contract Obligations

### CalSAWS | SFY 2019/20 CONTRACT OBLIGATIONS

Warranty & Liquidated Damages Detail - SFY 2019/20					
Category	Contract	Service Month	Amount	Invoice Month	Invoice #
Application Maintenance Warranty	C-IV	June-19	\$2,408	September-19	23423
Application Maintenance Warranty	C-IV	August-19	\$5,332	November-19	1100611182
Application Maintenance Liquidated Damage (Daily Prime Business Hours ED/BC Reponse Time)	LRS	July-19	\$2,000	October-19	1100602763
Technical Infrastructure Warranty	C-IV	August-19	\$137	November-19	1100611187
CalWIN UAT Delivery	CalWIN	March-19	\$5,000	October-19	60015449
Cov CA System Availability Contact CalWIN	CalWIN	June-19	\$7,000	October-19	60015449
<b>Total</b>			<b>\$21,877</b>		

Hours & Credits					
Category	Actuals	Projections (ETC)	EAC	Allowance	BALANCE +Under / (-Over)
CalWIN Modernization ("Modification") Hours	\$487,096	\$2,546,098	\$3,033,194	\$6,994,227	\$3,961,033
CalWIN Business Intelligence (BI)	\$2,310,744	\$1,660,471	\$3,971,215	\$3,971,215	\$0
CalWIN IDMS	\$0	\$1,500,000	\$1,500,000	\$1,500,000	\$0
CalWIN Business Rules Engine (BRE)	\$0	\$3,500,000	\$3,500,000	\$3,500,000	\$0
C-IV Royalty Fees	\$29,584	\$370,416	\$400,000	\$400,000	\$0
<b>Total</b>	<b>\$2,827,424</b>	<b>\$9,576,985</b>	<b>\$12,404,409</b>	<b>\$16,365,442</b>	<b>\$3,961,033</b>

Modernization Hours are updated each August with 8,500 hours; includes unused hours from prior years.

IDMS estimate of \$1.5M for potential utilization of hours for CalSAWS GA/GR.

BRE estimate of \$3.5M for potential utilization of hours for CalSAWS GA/GR.

Royalty fees includes \$200k shifted from SFY 18/19, updated through September 2019.



# CalWIN Financial Update

## CalSAWS IAPDU - DD&I County Support Staff for CalWIN

- The June 2019 CalSAWS IAPDU was submitted on June 3<sup>rd</sup> to the State for review and approval, followed by submission to federal sponsors on September 3<sup>rd</sup>.
- The IAPDU is pending official approval as of November 6<sup>th</sup> but both CMS and FNS have indicated provisional approval!
- The IAPDU included a request for an additional \$17M in County Support Staff funding, which was approved by the State subject to some reporting and tracking conditions.
- This funding is in addition to previously approved funding for manual conversion and retooling of ancillaries.
- The new funding accounts for the following activities:
  - Initial planning and coordination activities to support for the OCM vendor contract
  - Assessing the impacts of contractual changes to existing ancillary systems
  - Assessing the impact to county business processes based on consortium and county decisions regarding the ancillary systems
  - Coordinating communications to county staff, county administrators, HR departments, Board of Supervisors, labor organizations, other county departments and community-based organizations

# CalSAWS DD&I County Support Staff

## Total by County and SFY

County Name	SFY 19/20	SFY 20/21	SFY 21/22	SFY 22/23	Total	County Name	SFY 19/20	SFY 20/21	SFY 21/22	SFY 22/23	Total
Alameda	\$467,991	\$623,988	\$1,348,362	\$1,621,403	\$4,061,744	Placer	\$155,997	\$339,004	\$383,063	\$0	\$878,064
Alpine	\$0	\$100,634	\$33,940	\$0	\$134,574	Plumas	\$0	\$111,585	\$43,443	\$0	\$155,028
Amador	\$0	\$116,097	\$47,302	\$0	\$163,399	Riverside	\$0	\$2,002,101	\$1,508,235	\$0	\$3,510,336
Butte	\$0	\$250,327	\$163,629	\$0	\$413,956	Sacramento	\$467,991	\$623,988	\$1,006,163	\$2,610,574	\$4,708,716
Calaveras	\$0	\$122,575	\$52,983	\$0	\$175,558	San Benito	\$0	\$136,590	\$65,094	\$0	\$201,684
Colusa	\$0	\$118,218	\$49,173	\$0	\$167,391	San Bernardino	\$0	\$2,115,096	\$1,606,128	\$0	\$3,721,224
Contra Costa	\$467,991	\$623,988	\$876,751	\$964,252	\$2,932,982	San Diego	\$467,991	\$623,988	\$2,953,147	\$2,162,798	\$6,207,924
Del Norte	\$0	\$121,162	\$51,720	\$0	\$172,882	San Francisco	\$467,991	\$623,988	\$574,967	\$1,159,138	\$2,826,084
El Dorado	\$0	\$173,246	\$96,852	\$0	\$270,098	San Joaquin	\$0	\$817,413	\$563,835	\$0	\$1,381,248
Fresno	\$467,991	\$623,988	\$1,435,852	\$1,775,180	\$4,303,011	San Luis Obispo	\$155,997	\$207,996	\$183,577	\$333,314	\$880,884
Glenn	\$0	\$123,395	\$53,652	\$0	\$177,047	San Mateo	\$311,994	\$415,992	\$769,038	\$384,072	\$1,881,096
Humboldt	\$0	\$204,124	\$123,582	\$0	\$327,706	Santa Barbara	\$311,994	\$415,992	\$951,570	\$212,556	\$1,892,112
Imperial	\$0	\$277,481	\$187,137	\$0	\$464,618	Santa Clara	\$467,991	\$810,219	\$2,417,798	\$154,828	\$3,850,836
Inyo	\$0	\$110,879	\$42,835	\$0	\$153,714	Santa Cruz	\$155,997	\$207,996	\$392,107	\$226,052	\$982,152
Kern	\$0	\$1,191,395	\$805,827	\$0	\$1,997,222	Shasta	\$0	\$209,937	\$128,643	\$0	\$338,580
Kings	\$0	\$208,452	\$127,356	\$0	\$335,808	Sierra	\$0	\$101,376	\$34,584	\$0	\$135,960
Lake	\$0	\$161,544	\$86,700	\$0	\$248,244	Siskiyou	\$0	\$132,894	\$61,902	\$0	\$194,796
Lassen	\$0	\$114,534	\$45,990	\$0	\$160,524	Solano	\$311,994	\$415,992	\$558,708	\$327,990	\$1,614,684
Madera	\$0	\$231,210	\$147,066	\$0	\$378,276	Sonoma	\$311,994	\$415,992	\$424,258	\$451,436	\$1,603,680
Marin	\$0	\$188,664	\$110,220	\$0	\$298,884	Stanislaus	\$0	\$739,002	\$495,870	\$0	\$1,234,872
Mariposa	\$0	\$108,723	\$40,929	\$0	\$149,652	Sutter	\$0	\$179,166	\$101,970	\$0	\$281,136
Mendocino	\$0	\$178,347	\$101,301	\$0	\$279,648	Tehama	\$0	\$151,299	\$77,805	\$0	\$229,104
Merced	\$0	\$540,843	\$324,213	\$0	\$865,056	Trinity	\$0	\$107,934	\$40,290	\$0	\$148,224
Modoc	\$0	\$105,774	\$38,382	\$0	\$144,156	Tulare	\$467,991	\$742,626	\$1,593,827	\$98,356	\$2,902,800
Mono	\$0	\$107,268	\$39,672	\$0	\$146,940	Tuolumne	\$0	\$124,851	\$54,909	\$0	\$179,760
Monterey	\$0	\$641,397	\$411,315	\$0	\$1,052,712	Ventura	\$311,994	\$415,992	\$1,273,878	\$353,412	\$2,355,276
Napa	\$0	\$160,059	\$85,413	\$0	\$245,472	Yolo	\$155,997	\$337,402	\$376,469	\$0	\$869,868
Nevada	\$0	\$146,835	\$73,989	\$0	\$220,824	Yuba	\$0	\$158,601	\$84,111	\$0	\$242,712
Orange	\$467,991	\$623,988	\$3,688,285	\$1,296,128	\$6,076,392	<b>Total</b>	<b>\$6,395,877</b>	<b>\$21,984,147</b>	<b>\$29,415,817</b>	<b>\$14,131,489</b>	<b>\$71,927,330</b>

# CalSAWS DD&I County Support Staff

## Manual Conversion Details by County and SFY

County Name	SFY 19/20	SFY 20/21	SFY 21/22	SFY 22/23	Total	County Name	SFY 19/20	SFY 20/21	SFY 21/22	SFY 22/23	Total
Alameda	\$0	\$0	\$683,480	\$1,366,960	\$2,050,440	Placer	\$0	\$50,014	\$250,070	\$0	\$300,084
Alpine	\$0	\$594	\$594	\$0	\$1,188	Plumas	\$0	\$9,372	\$9,372	\$0	\$18,744
Amador	\$0	\$12,906	\$12,906	\$0	\$25,812	Riverside	\$0	\$1,261,302	\$1,261,302	\$0	\$2,522,604
Butte	\$0	\$120,288	\$120,282	\$0	\$240,570	Sacramento	\$0	\$0	\$440,102	\$2,200,510	\$2,640,612
Calaveras	\$0	\$18,186	\$18,186	\$0	\$36,372	San Benito	\$0	\$29,346	\$29,346	\$0	\$58,692
Colusa	\$0	\$14,652	\$14,652	\$0	\$29,304	San Bernardino	\$0	\$1,351,644	\$1,351,644	\$0	\$2,703,288
Contra Costa	\$0	\$0	\$402,584	\$805,168	\$1,207,752	San Diego	\$0	\$0	\$2,004,210	\$2,004,210	\$4,008,420
Del Norte	\$0	\$16,998	\$16,998	\$0	\$33,996	San Francisco	\$0	\$0	\$185,042	\$925,210	\$1,110,252
El Dorado	\$0	\$58,656	\$58,656	\$0	\$117,312	San Joaquin	\$0	\$437,046	\$437,046	\$0	\$874,092
Fresno	\$0	\$0	\$756,836	\$1,513,672	\$2,270,508	San Luis Obispo	\$0	\$0	\$50,434	\$252,170	\$302,604
Glenn	\$0	\$18,780	\$18,780	\$0	\$37,560	San Mateo	\$0	\$0	\$313,830	\$313,830	\$627,660
Humboldt	\$0	\$83,310	\$83,310	\$0	\$166,620	Santa Barbara	\$0	\$0	\$425,112	\$212,556	\$637,668
Imperial	\$0	\$141,966	\$141,966	\$0	\$283,932	Santa Clara	\$0	\$0	\$1,703,108	\$154,828	\$1,857,936
Inyo	\$0	\$8,814	\$8,814	\$0	\$17,628	Santa Cruz	\$0	\$0	\$197,538	\$197,538	\$395,076
Kern	\$0	\$613,044	\$613,044	\$0	\$1,226,088	Shasta	\$0	\$87,996	\$87,996	\$0	\$175,992
Kings	\$0	\$86,808	\$86,808	\$0	\$173,616	Sierra	\$0	\$1,188	\$1,188	\$0	\$2,376
Lake	\$0	\$49,278	\$49,278	\$0	\$98,556	Siskiyou	\$0	\$26,406	\$26,406	\$0	\$52,812
Lassen	\$0	\$11,718	\$11,718	\$0	\$23,436	Solano	\$0	\$0	\$296,310	\$296,310	\$592,620
Madera	\$0	\$104,994	\$104,994	\$0	\$209,988	Sonoma	\$0	\$0	\$194,204	\$388,408	\$582,612
Marin	\$0	\$70,998	\$70,998	\$0	\$141,996	Stanislaus	\$0	\$374,304	\$374,304	\$0	\$748,608
Mariposa	\$0	\$7,032	\$7,032	\$0	\$14,064	Sutter	\$0	\$63,372	\$63,372	\$0	\$126,744
Mendocino	\$0	\$62,778	\$62,778	\$0	\$125,556	Tehama	\$0	\$41,058	\$41,058	\$0	\$82,116
Merced	\$0	\$215,898	\$215,898	\$0	\$431,796	Trinity	\$0	\$6,468	\$6,468	\$0	\$12,936
Modoc	\$0	\$4,686	\$4,686	\$0	\$9,372	Tulare	\$0	\$0	\$1,081,916	\$98,356	\$1,180,272
Mono	\$0	\$5,874	\$5,874	\$0	\$11,748	Tuolumne	\$0	\$19,938	\$19,938	\$0	\$39,876
Monterey	\$0	\$296,274	\$296,274	\$0	\$592,548	Ventura	\$0	\$0	\$706,824	\$353,412	\$1,060,236
Napa	\$0	\$48,090	\$48,090	\$0	\$96,180	Yolo	\$0	\$48,766	\$243,830	\$0	\$292,596
Nevada	\$0	\$37,566	\$37,566	\$0	\$75,132	Yuba	\$0	\$46,938	\$46,890	\$0	\$93,828
Orange	\$0	\$0	\$2,592,256	\$1,296,128	\$3,888,384	<b>Total</b>	<b>\$0</b>	<b>\$5,965,346</b>	<b>\$18,394,198</b>	<b>\$12,379,266</b>	<b>\$36,738,810</b>

# CalSAWS DD&I County Support Staff

## Preparation & Planning Details by County and SFY

County	Size	Hourly Rate	FTEs	# Hours	SFY 2019/20 9 Months	SFY 2020/21 12 Months	SFY 2021/22 3 Months	Total
Alameda	Large	\$100	3	173.33	\$467,991	\$623,988	\$155,997	\$1,247,976
Contra Costa	Large	\$100	3	173.33	\$467,991	\$623,988	\$155,997	\$1,247,976
Fresno	Large	\$100	3	173.33	\$467,991	\$623,988	\$155,997	\$1,247,976
Orange	Large	\$100	3	173.33	\$467,991	\$623,988	\$155,997	\$1,247,976
Placer	Small	\$100	1	173.33	\$155,997	\$207,996	\$51,999	\$415,992
Sacramento	Large	\$100	3	173.33	\$467,991	\$623,988	\$155,997	\$1,247,976
San Diego	Large	\$100	3	173.33	\$467,991	\$623,988	\$155,997	\$1,247,976
San Francisco	Large	\$100	3	173.33	\$467,991	\$623,988	\$155,997	\$1,247,976
San Luis Obispo	Small	\$100	1	173.33	\$155,997	\$207,996	\$51,999	\$415,992
San Mateo	Medium	\$100	2	173.33	\$311,994	\$415,992	\$103,998	\$831,984
Santa Barbara	Medium	\$100	2	173.33	\$311,994	\$415,992	\$103,998	\$831,984
Santa Clara	Large	\$100	3	173.33	\$467,991	\$623,988	\$155,997	\$1,247,976
Santa Cruz	Small	\$100	1	173.33	\$155,997	\$207,996	\$51,999	\$415,992
Solano	Medium	\$100	2	173.33	\$311,994	\$415,992	\$103,998	\$831,984
Sonoma	Medium	\$100	2	173.33	\$311,994	\$415,992	\$103,998	\$831,984
Tulare	Large	\$100	3	173.33	\$467,991	\$623,988	\$155,997	\$1,247,976
Ventura	Medium	\$100	2	173.33	\$311,994	\$415,992	\$103,998	\$831,984
Yolo	Small	\$100	1	173.33	\$155,997	\$207,996	\$51,999	\$415,992
<b>Total</b>			<b>41</b>	<b>3,119.94</b>	<b>\$6,395,877</b>	<b>\$8,527,836</b>	<b>\$2,131,959</b>	<b>\$17,055,672</b>

# CalSAWS DD&I County Support Staff

## Ancillaries (BI, County Data Extract, Other) by County and SFY

County Name	SFY 19/20	SFY 20/21	SFY 21/22	SFY 22/23	Total	County Name	SFY 19/20	SFY 20/21	SFY 21/22	SFY 22/23	Total
Alameda	\$0	\$0	\$508,885	\$254,443	\$763,328	Placer	\$0	\$80,994	\$80,994	\$0	\$161,988
Alpine	\$0	\$100,040	\$33,346	\$0	\$133,386	Plumas	\$0	\$102,213	\$34,071	\$0	\$136,284
Amador	\$0	\$103,191	\$34,396	\$0	\$137,587	Riverside	\$0	\$740,799	\$246,933	\$0	\$987,732
Butte	\$0	\$130,039	\$43,347	\$0	\$173,386	Sacramento	\$0	\$0	\$410,064	\$410,064	\$820,128
Calaveras	\$0	\$104,389	\$34,797	\$0	\$139,186	San Benito	\$0	\$107,244	\$35,748	\$0	\$142,992
Colusa	\$0	\$103,566	\$34,521	\$0	\$138,087	San Bernardino	\$0	\$763,452	\$254,484	\$0	\$1,017,936
Contra Costa	\$0	\$0	\$318,170	\$159,084	\$477,254	San Diego	\$0	\$0	\$792,940	\$158,588	\$951,528
Del Norte	\$0	\$104,164	\$34,722	\$0	\$138,886	San Francisco	\$0	\$0	\$233,928	\$233,928	\$467,856
El Dorado	\$0	\$114,590	\$38,196	\$0	\$152,786	San Joaquin	\$0	\$380,367	\$126,789	\$0	\$507,156
Fresno	\$0	\$0	\$523,019	\$261,508	\$784,527	San Luis Obispo	\$0	\$0	\$81,144	\$81,144	\$162,288
Glenn	\$0	\$104,615	\$34,872	\$0	\$139,487	San Mateo	\$0	\$0	\$351,210	\$70,242	\$421,452
Humboldt	\$0	\$120,814	\$40,272	\$0	\$161,086	Santa Barbara	\$0	\$0	\$422,460	\$0	\$422,460
Imperial	\$0	\$135,515	\$45,171	\$0	\$180,686	Santa Clara	\$0	\$186,231	\$558,693	\$0	\$744,924
Inyo	\$0	\$102,065	\$34,021	\$0	\$136,086	Santa Cruz	\$0	\$0	\$142,570	\$28,514	\$171,084
Kern	\$0	\$578,351	\$192,783	\$0	\$771,134	Shasta	\$0	\$121,941	\$40,647	\$0	\$162,588
Kings	\$0	\$121,644	\$40,548	\$0	\$162,192	Sierra	\$0	\$100,188	\$33,396	\$0	\$133,584
Lake	\$0	\$112,266	\$37,422	\$0	\$149,688	Siskiyou	\$0	\$106,488	\$35,496	\$0	\$141,984
Lassen	\$0	\$102,816	\$34,272	\$0	\$137,088	Solano	\$0	\$0	\$158,400	\$31,680	\$190,080
Madera	\$0	\$126,216	\$42,072	\$0	\$168,288	Sonoma	\$0	\$0	\$126,056	\$63,028	\$189,084
Marin	\$0	\$117,666	\$39,222	\$0	\$156,888	Stanislaus	\$0	\$364,698	\$121,566	\$0	\$486,264
Mariposa	\$0	\$101,691	\$33,897	\$0	\$135,588	Sutter	\$0	\$115,794	\$38,598	\$0	\$154,392
Mendocino	\$0	\$115,569	\$38,523	\$0	\$154,092	Tehama	\$0	\$110,241	\$36,747	\$0	\$146,988
Merced	\$0	\$324,945	\$108,315	\$0	\$433,260	Trinity	\$0	\$101,466	\$33,822	\$0	\$135,288
Modoc	\$0	\$101,088	\$33,696	\$0	\$134,784	Tulare	\$0	\$118,638	\$355,914	\$0	\$474,552
Mono	\$0	\$101,394	\$33,798	\$0	\$135,192	Tuolumne	\$0	\$104,913	\$34,971	\$0	\$139,884
Monterey	\$0	\$345,123	\$115,041	\$0	\$460,164	Ventura	\$0	\$0	\$463,056	\$0	\$463,056
Napa	\$0	\$111,969	\$37,323	\$0	\$149,292	Yolo	\$0	\$80,640	\$80,640	\$0	\$161,280
Nevada	\$0	\$109,269	\$36,423	\$0	\$145,692	Yuba	\$0	\$111,663	\$37,221	\$0	\$148,884
Orange	\$0	\$0	\$940,032	\$0	\$940,032	<b>Total</b>	<b>\$0</b>	<b>\$7,490,965</b>	<b>\$8,889,660</b>	<b>\$1,752,223</b>	<b>\$18,132,848</b>

- 
- 
- 9. CalSAWS Stakeholder Management Strategy
    - a. Strategy for engaging Unions
-




# Presentation / Informational Items

---



## 10. Stakeholder Updates

- a. CDSS
  - b. DHCS
  - c. OSI
  - d. CWDA
- 
-





## 11. SSA Security Evaluation Questionnaire (SEQ)

- a. CalWIN SSA SEQ Request
- b. Opportunities



# SSA Security Evaluation Questionnaire (SEQ)

## CalWIN SSA SEQ Request

- Request to establish a secure virtual private cloud environment meeting SSA requirements to be able to store and process CalWIN data in a secure Cloud setting has been submitted to OSI, CDSS & DHCS
- Initial meeting scheduled for November 22, 2019 to discuss request with OSI, CDSS & DHCS.

# SSA Security Evaluation Questionnaire (SEQ)

## Opportunities

- CalWIN envisions using a secure AWS environment and services to configure and test database management system upgrades or other critical software component upgrades used within the current CalWIN system. This will minimize risk to counties in maintaining and running the CalWIN system on the upgraded versions of software or virtual resources.
- CalWIN also envisions using secure cloud services to pilot and test AWS replication technologies to replicate county information system data from the current CalWIN data center and databases out to the Counties' target servers.
- DXC, as CalWIN's managed services provider, plans to use secure AWS Cloud services and resources to both prepare to migrate to CalSAWS and to efficiently and effectively maintain the existing CalWIN system until all 18 CalWIN Counties are migrated to CalSAWS.
- Approval is needed for the Cloud-based CIS replication pilot project, database and other software version upgrade projects to proceed. Allows DXC to best support CalWIN system operations for all 18 counties until the CalSAWS migration is complete.



## 12. M&O Application and Operations Update

- a. Operational Issues
  - b. CalWIN Release Schedule
- 



# Operational Issues

## Thank You for Supporting Sonoma County

- *Contra Costa*
- *Sacramento*
- *San Diego*
  
- Activated a toll-free line
- Initiated Round Robin functionality
- 413 calls re-routed to supporting counties over three days (10/30-11/1)
- Supporting Counties provided dedicated staff to support calls and customer inquires/applications

# Operational Issues

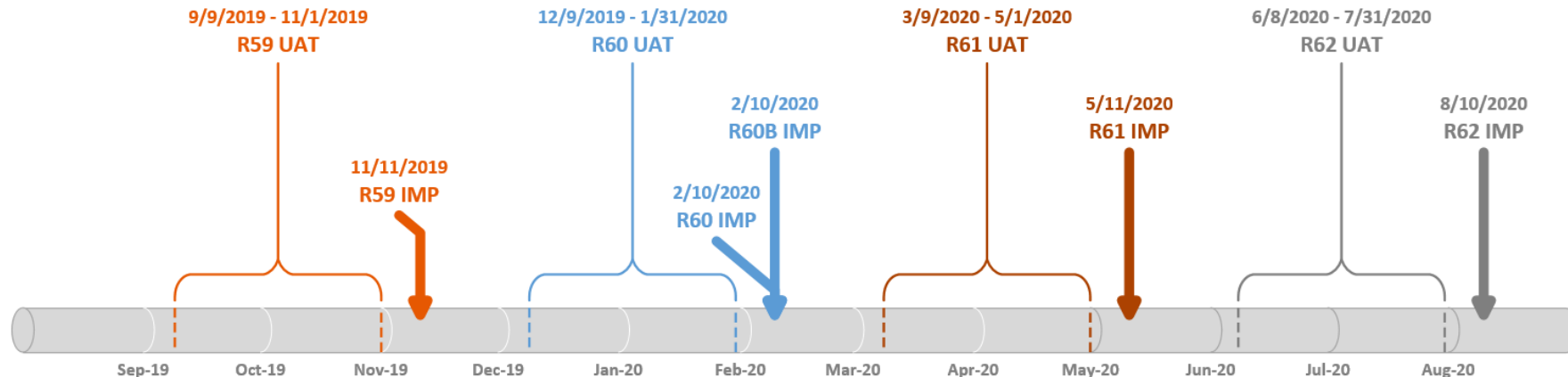
- Sonoma – Kinkade Fire
  
- MAGI Auto-Renewals issue
  - December 2019 renewals
  - January 2020 renewals
  
- Emergency Support items
  - CalFresh Mass replacements – power outages
    - ✦ October 2019
    - ✦ November 2019
  - Disaster CalFresh
    - ✦ November 2019

# CalWIN Release Schedule

Rev. 11/7/2019



## CalWIN Release Delivery Impact



**R59 –11/11/19**  
(14,515 Effort hours\*)

- 48760 CMS – Production of CMS Performance Indicators (PI)
- 50565 Relative Placements Emergency Assistance
- 50566 ACL 18-43 TOA NOAs
- 50727 Auto Case Matching for Referrals
- 51167 Auto Update Renewal date for e-verified but CalWIN batch exception
- 51168 Pre-ACA Aid Codes Updates
- 51192 Align Validation Messages within MyBCW, County Worker and CalWIN
- 52311 Interim solution - 51484 increasing CalFresh threshold to \$400 (SB278) )
- 52491 Medi-Cal Young Adult Expansion (Phase 2)
- 50780 Update MEDS Alerts from MEDS Home Extranet

**R60 & R60B –2/10/20**  
(44,097 Effort Hours\*\*\*)

- Release 60 Projects & Proposals
- 50941 Medi-Cal Non-MAGI Denial & Disc NOA
- 51002 Re-Evaluate the Special Indicator and ENOA in MyBCW
- 51361 Addl Immigration Status for Non-MAGI Programs
- 51378 eICT Phase III
- 51600 CF Redesign Over Issuance Notices
- 51601 Application or Renewals with No Potential MAGI (ACDWL 18-16)
- 51732 ACL 18-23 Child Support Recoupment and TOA
- 51981 CalWORKS Overpayment Recovery SB726 - Phase I
- 52070 CW Telephonic Interview Question & Mobile Browser Update
- 52180 CalFresh Benefits to not be Staggered for Initial Month of Certification
- 52375 WTW 25/25A CalWORKS WTW Monthly Activity Report Updates
- 52396 Increasing CalFresh threshold to \$400
- 52398 Cal-OAR Phase 2
- 52424 Internal Solution for CalHEERS BV 15)
- 52489 Home Visiting Initiative
- 53020 CMS PI 9; 10 & 12 BI Sol
- 52397 Tracking ABAWD Participation
- 49543 Access CalWIN Upgrade
- 51674 CD ORG MC355 Reminder
- 52264 CD ORG Automate RMP spec correspondence
- 52265 CD YOL Medi-Cal Renewal Packet Print Mode Change
- 52069 Update Account Confirmation Page in MyBCW
- Release 60B Projects & Proposals
- 50629 Individual level eligibility determinations
- 51477 Tax Cuts and Job Act 2019 (CalHEERS 138728)

**R61 –5/11/2020**  
(41,462 Effort Hours\*)

- 51733 Restoration of EBT Cash Benefits that are lost to electronic theft by skimming or scams
- 51773 Separation of Income by Program
- 53031 Individual Level Eligibility Determinations (ACDWL 16-16) - Align RMR 2.3 BI Report
- 52361 Notification of New Employment (SAWS 30)
- 53118 Cal-OAR Phase 2 - Integrated BI Solution
- 52490 Mega-Mandatory discontinuances
- 52816 Soft Pause and Renewals
- 52291 OCAT Integration
- 52263 Oracle Business Service Upgrade
- 52694 Adobe Robohelp Upgrade
- 51553 CD SCL Auto generate GA 201 for Transportation Approvals
- 52905 CD SOL GA Periodic Reporting Change

**R62 –8/10/2020**  
(13,420 Effort Hours\*)

- 53019 MC 355 Redesign scams
- 53021 Employment Services reports and data in BI
- 53132 NOD2 Worker Information
- 53236 ALA External Referral for App Reg (SMR)
- 53297 ALA CF285 and VRU

\*\*\* Indicates combined effort hours for R60 and R60B.

\*Forecasted total Effort Hours will increase as estimates are finalized and if additional content is added to the releases.

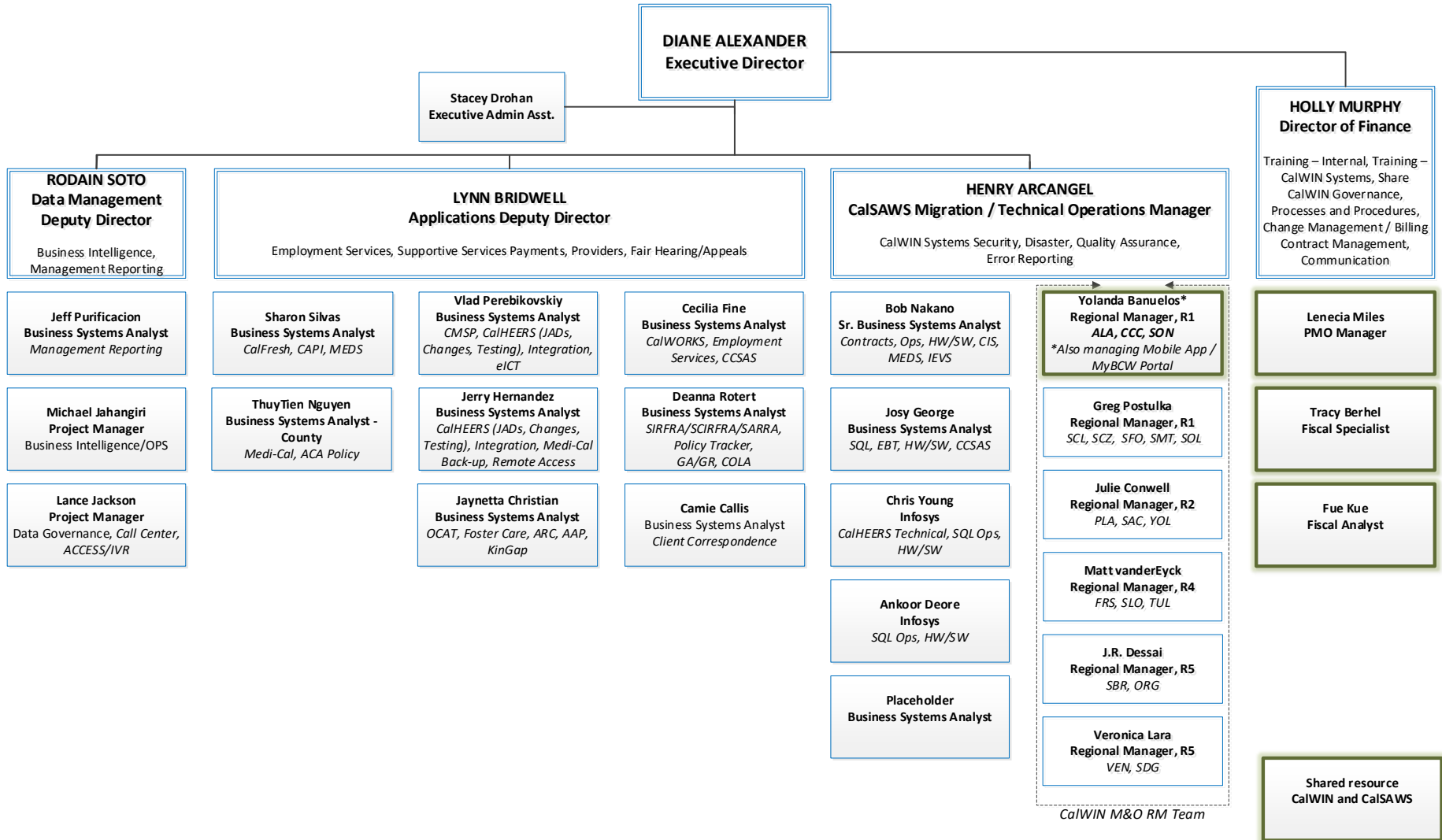


## 13. CalWIN and CalSAWS Staffing

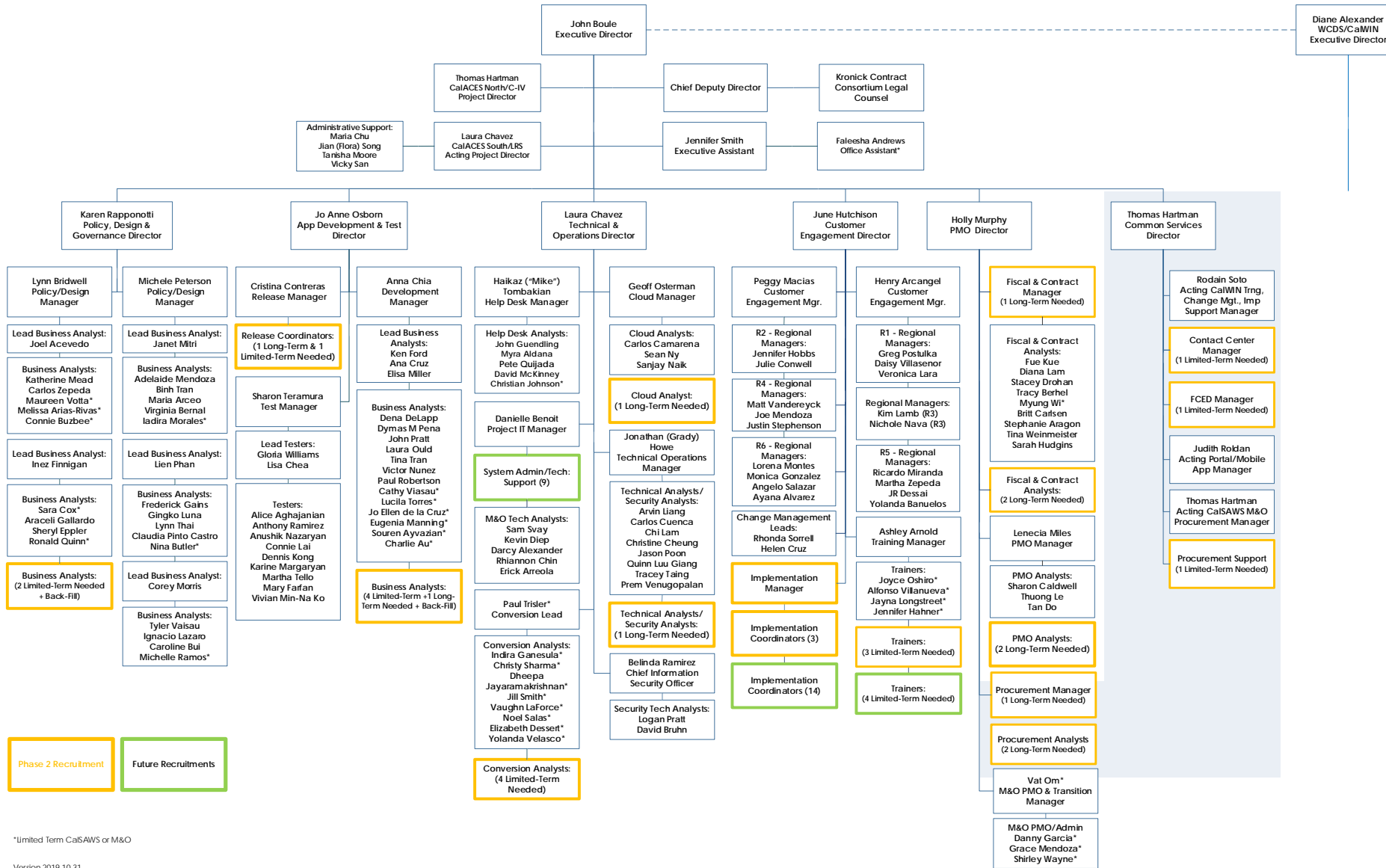
- a. CalWIN Transition Complete
  - b. CalSAWS Recruitment
- 
-



# CalWIN Project Team



# CaSAWS Consortium Project Team



\*Limited Term CaSAWS or M&O

# CalSAWS Recruitment

CIT 0084-19 Recruitment of CalSAWS Project Staff Closing Friday, Nov. 29, 2019

- Project Management Office (PMO)
  - Fiscal/Contract Manager (1 long-term)
  - Fiscal/Contract Analyst (2 long-term)
  - PMO Analysts (2 long-term)
  
- Common Services/PMO
  - Procurement Manager (1 long-term)
  - Procurement Analysts (2 long-term)
  - Procurement Analysts (2 limited-term through January 2023)
  
- Technical & Operations
  - Cloud Analyst (1 long-term)
  - Conversion Analyst (4 limited-term through January 2023)
  
- Application Development & Test
  - Release Coordinator (1 long-term)
  - Release Coordinator (1 limited-term through January 2023)
  
- Policy, Design & Application Development
  - Business Analysts (4 limited-term through September 2021 or January 2023 depending on specific assignment)
  
- Customer Engagement
  - Implementation Manager (1 limited-term through January 2023)
  - Implementation Coordinators (3 limited-term through January 2023)
  - Trainers (3 limited-term through January 2023)



## 14. Functional Design Sessions Outcomes

- a. Imaging Update
  - b. Task Management Update
  - c. GA/GR Update
  - d. Non-State Forms Update
  - e. APIs Update
  - f. Functional Design Sessions Roadmap
- 
-

# Updates to Imaging Discussions

## September/October 2019 Working Sessions

- Round 1 (presented at August JPA)-
  - Compared two options: 1) **Hyland** to 2) **Kofax/Documentum**
    - ✦ Discussed 5 year pricing
    - ✦ Risk and Timeline were additional considerations- AWS credentials
    - ✦ Both solutions were deemed to meet requirements from Functional Design
  - Consortium Recommended **Hyland**
  
- Round 2 (September/October)- 3 options assessed with **Kofax** and **Documentum** no longer combined
  - **Hyland**
  - **Kofax/CloudDocs**
  - OpenText (Captiva/**Documentum**)
  
- Results:
  - Met with Vendors
  - Vendors improved pricing
  - Vendors improved licensing terms
  - Consortium confirmed all options can meet requirements from Functional Design
  
- Recommendation going to JPA Board on 11/15/2019

# Functional Design Sessions

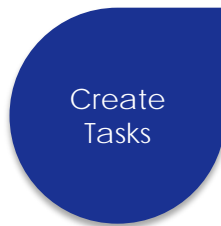
## GA/GR

- Existing LA County GR functionality will continue to be unchanged and part of CalSAWS
- Leveraging existing Consortia assets and solutions, where possible
  - Existing CalWIN rules and client correspondence
  - Existing C-IV managed GA program functionality
- Add functionality to support existing 57 Counties GA/GR programs, including data collection, eligibility rules where appropriate, fiscal processing, periodic reporting, and employment services programs
- Consortium analysis of the proposed solution is in progress and includes:
  - Accenture and DXC working together to refine the technical solution for eligibility and correspondence requirements
  - Consortium and partners are reviewing and assessing the proposed technical solution and potential alternate solutions. This includes not only the DD&I scope but ongoing maintenance of the solution

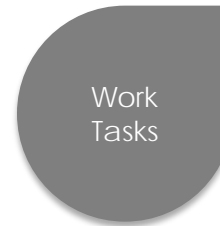
# Functional Design Sessions

## Task Management

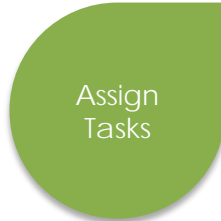
- Task requirements were updated to reflect business needs as noted by participants



- Manual Task Creation
- Automated Actions
- Image Based Tasks
- Other Task Creation Methods



- My Tasks and Task Search Pages
- Worklist Pages
- Get Next Button



- Program Worker
- Worker Schedule
- Office Distribution
- Task Banks



- Task Reports
  - On Request
  - Extracts
- Dashboard
- Subscription
- Quality Sampling



- Manual Reassignment
- Bulk Reassignment
- Program Reassignment

# Functional Design Sessions

## Non-State Forms

- Overarching goal was to develop one set of Non-State Forms for all 58 counties where possible
- Reviewed 246 most frequently generated Non-State Forms across the three SAWS Systems. Forms were mapped across the three systems e.g. New Worker Letter, Appointment Letter
- Agreed to retain 161 forms with the overarching agreement to use a single Non-State Form where similar forms existed across the three SAWS Systems

Item	WTW	CC	MC	CW/CF	Total
<b>Requires further County Input</b>			1	18	19
<b>Deferred to Future Efforts</b>					
Deferred to IVR				2	2
Deferred to Self Service Portal				3	3
<b>Modify Existing / Create New Forms</b>					
Migrate modified C-IV Form	9	2	1	7	19
Modify LRS Form	3		5	21	29
New CalSAWS Form	6	4	9	19	38
Use State Form	1		2	3	6
<b>Existing CalSAWS System Change Request</b>	4			3	7
<b>Not Needed/Use Existing Form</b>	3	1	6	28	38
<b>Total</b>	<b>26</b>	<b>7</b>	<b>24</b>	<b>104</b>	<b>161</b>



# Functional Design Sessions

## Application Programming Interfaces (APIs)

- Long-Term Goal is to provide access to CalSAWS data via APIs
- Full integration of the APIs will be a phased approach
- Initial Data Access will be provided via APIs for targeted needs and supplemented with the Enhanced Data Reporting (EDR) solution
- EDR is a copy of the production schema that is refreshed on a nightly basis and made available within the CalSAWS cloud infrastructure
- Initial API implementation will focus on near real-time needs for:
  - Lobby Management
  - Appointments
  - Worker Schedule
  - Employment Services
  - Program and Person Information
  - Other needs
- Counties will continue to be provided access to read-only schemas for ad-hoc reporting
- APIs will provide counties access to near real-time data for specific needs as business domain objects or as raw data

# Functional Design Sessions

## CalWIN Ancillary Systems Conversions

- Facilitated functional Design Sessions with each of the CalWIN Counties to discuss core capabilities and conversion needs of the Collections, Fraud, and QA/QC Ancillary Systems
- The Conversion Team is defining a common extract file format for each of the areas (Collections, Fraud, QA/QC and Task Management) to be used by the Counties to format and provide their ancillary system data for automated conversion into CalSAWS
- Collections
  - 2 Ancillary Systems across 12 Counties Opting-In to the CalSAWS capabilities
  - 12 additional CalWIN County Conversion sources for this data
- Fraud
  - 18 Ancillary Systems across 16 Counties Opting-In to the CalSAWS capabilities
  - 18 additional CalWIN County Conversion sources for this data
- QA/QC
  - 13 Ancillary Systems across 10 Counties Opting-In to the CalSAWS capabilities
  - 13 additional CalWIN County Conversion sources for this data

*Note: The 18 CalWIN counties Task Management ancillary systems have been added representing an additional 18 sources for this data*

# Functional Design Sessions

## Requirements Summary

Functional Design Session	Total
Imaging	42
Task Management	32
Non State Forms	114
GA/GR	28
APIs	37
Ancillary Systems Conversion	50
Total New Requirements*	303

- The 303 FDS requirements are in addition to the existing ~600 requirements



## 15. CalSAWS Procurement Updates

- a. Portal/Mobile RFP Timeline
  - b. CalWIN OCM & Training RFP Timeline
- 



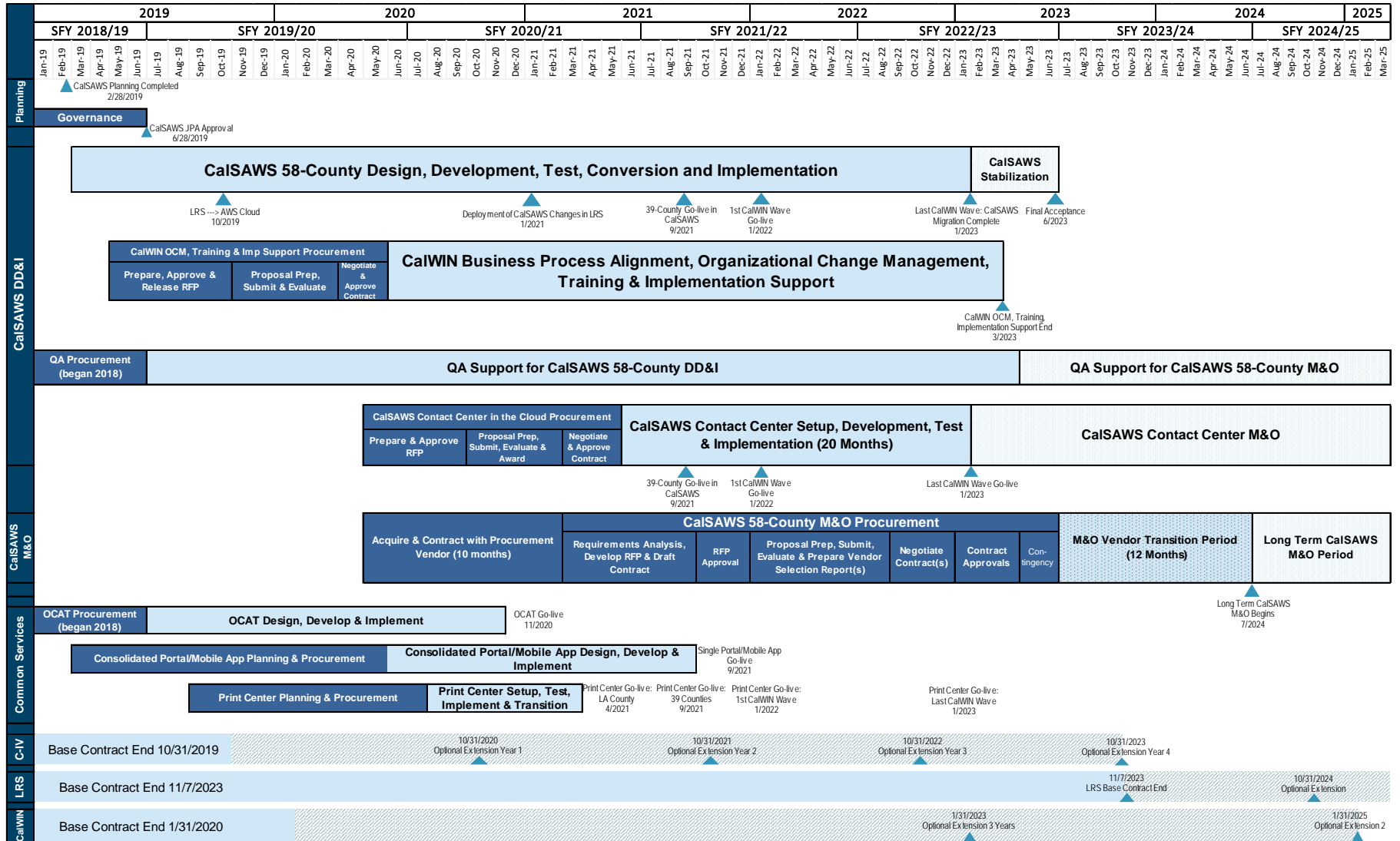
# CalSAWS Statewide Portal/Mobile Application Strategy, Scope and Timeline

Procurement Event	Date
Final Review by State Sponsors, Counties and Advocate Community	September 25 – October 2, 2019
Final Revisions to RFP Based on State and Stakeholder Feedback	October 3 – 7, 2019
Federal RFP Review and Approval	October 8 – October 31, 2019
Update RFP based on Federal Review	October 31 – November 1, 2019
Release RFP	November 4, 2019
Conduct Bidder's Conference Sacramento County Department of Human Assistance 1825 Bell Street, Suite 200 Room 256 Sacramento, CA	November 20, 2019 10:30am-12:00pm
Contractor Proposal Due Date	January 22, 2020
Evaluate Proposals and Prepare Vendor Selection Report	January 23 – April 22, 2020
Contract Negotiations	April 27 – May 5, 2020
State, Federal and JPA BOD Approval of Agreement	May 7 – August 7, 2020
Start Date of Statewide Portal/Mobile App Vendor	August 10, 2020
Portal/Mobile App Go-Live	September 2021

# CalWIN Training, OCM & Implementation Support Strategy, Scope and Timeline

PROCUREMENT EVENT	DATE
County, Consortium and State RFP Review	September 27 – October 15, 2019
Update RFP Based on Reviews	October 15 – October 20, 2019
Federal RFP Review and Approval	October 20 – December 13, 2019
RFP Release	December 17, 2019
Bidder's Conference	January 7, 2020, 10:30am – 12:00pm
Contractor Proposal Due Date	February 19, 2020
Evaluate Proposals and Prepare Vendor Selection Report	February 20 – May 18, 2020
Consortium Issues Notice of Intent to Award	May 19, 2020
Contract Negotiation Period	May 21 – June 2, 2020
Federal, State and Consortium JPA Board of Directors Approval of Agreement	June 5 – August 28, 2020
Planned Start Date of CalWIN Contractor	August 31, 2020

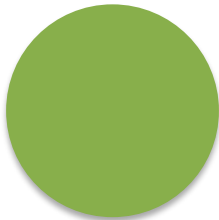
# CalSAWS Roadmap





## 16. CalSAWS LRS to Cloud

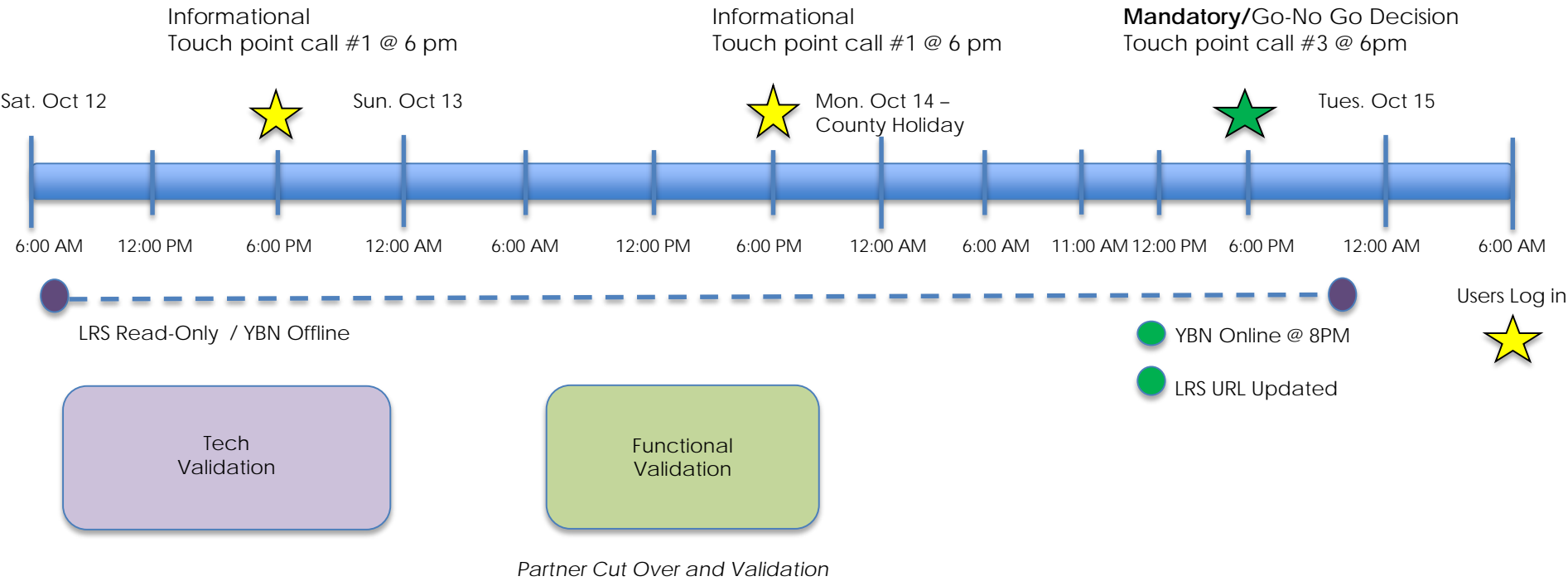
- a. Status Update
- b. LRS Release 19.11





# Cloud Status Update Cutover -

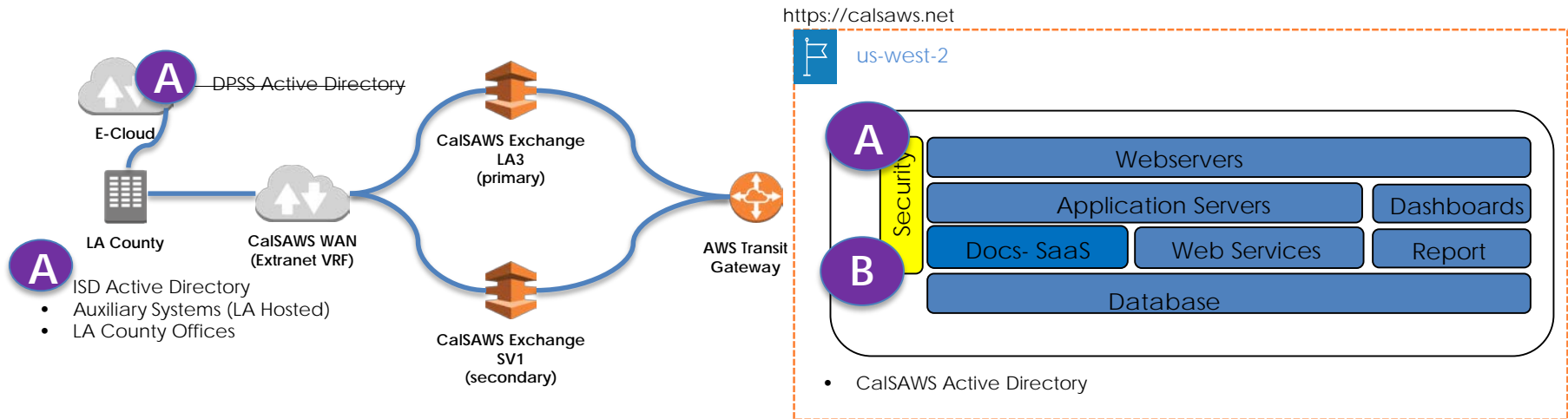
*Collaborative effort across multiple external partners to complete the cut over.*



*Email communications were sent every four hours through out the cut over weekend.*

# Post-Cutover

## Week One



### Challenge - Impact

Day 1: **A** Users encountered login errors during morning ramp up and afternoon ramp up

Day 2: **B** Users encounter login errors and experienced performance degradation post morning ramp up

Day 4: **B** Users experienced performance degradation for approximately a two hour period in the morning.

### Action Taken

Removed DPSS Active Directory from the rotation and modified settings in security software to handle the load.

Security software services were restarted. Additional tuning was applied in the evening.

Security software services were restarted. Daily restart scheduled and additional capacity added to security services to support the load.

# Lessons

## Applying Continuous Improvement

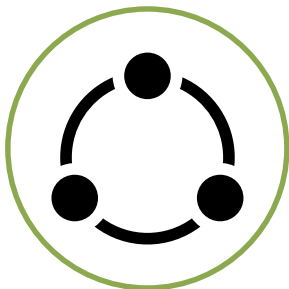


Minimize potential differences between testing processes/transactions and real user behavior



Mitigate potential risks with each release by enhancing test cycles and readiness criteria to minimize disruption to business operations.

Continue hosting County User testing. County Validation test and System Test efforts prove effectiveness of testing.



Continue collaboration to maintain high degree of cross communication across stakeholders ( business, external partners, service providers (Oracle, AWS))



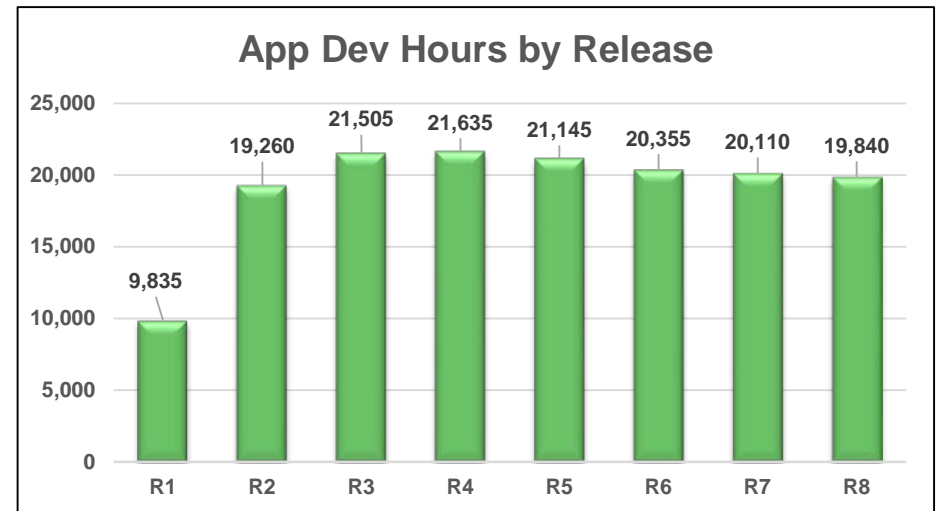
## 17. CalSAWS DD&I

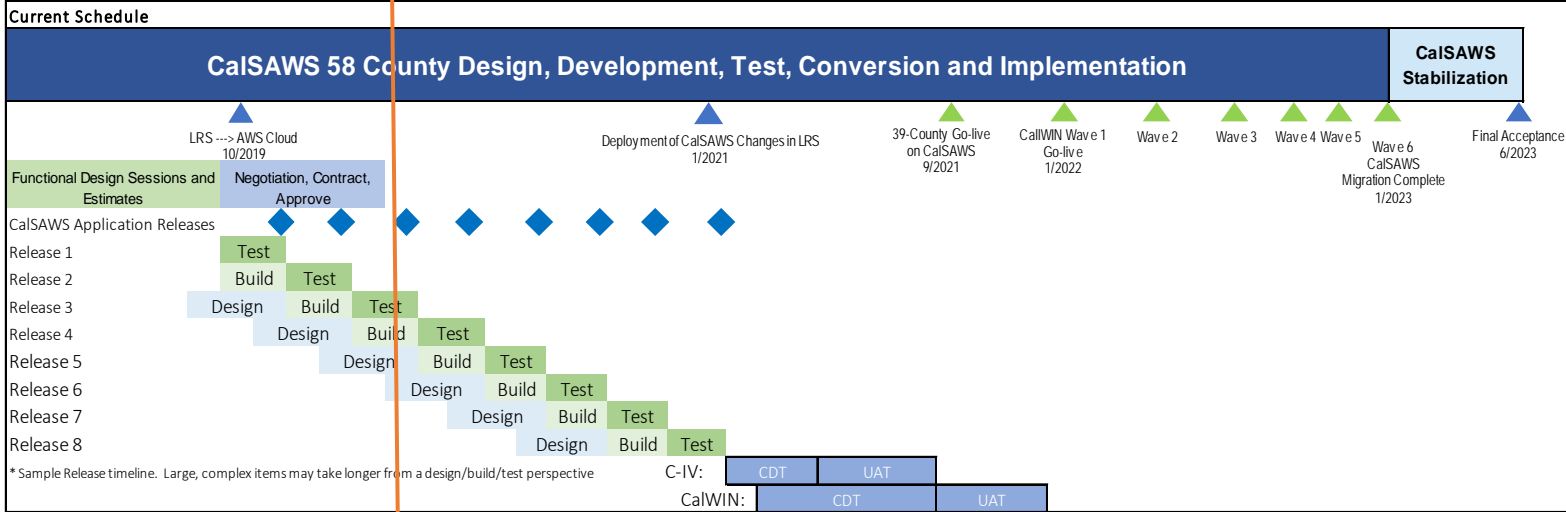
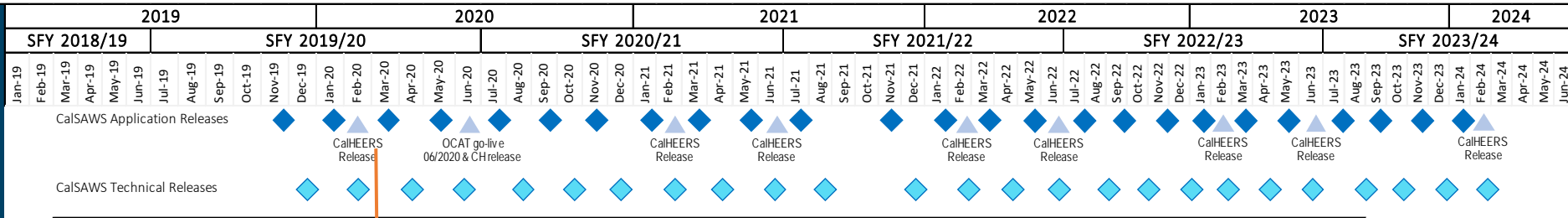
- a. Release Schedule
  - b. Sandbox Environment
- 



# CalSAWS DD&I

- Releases DD & I – Eight Releases combined with M & O
  - 19.11 (R1) November 25, 2019
  - 20.01 (R2) January 27, 2020
  - 20.03 (R3) March 23
  - 20.05 (R4) May 18
  - 20.07 (R5) July 20
  - 20.09 (R6) September 21
  - 20.11 (R7) November 23
  - 21.01 (R8) January, 2021





**Additional Scope from Functional Design Sessions:**

- 58 County Imaging
- Task management
- Non State Forms
- GA/GR
- APIs
- Ancillary Systems Conversions



**Analytics: BIP/State Reports replatforming**

**Other Consortium Activities:**

- CalWIN OCM & Training
- 58 County Contact Center Solution
- 58 County Portal Solution
- Foster Care - CARES Integration

- Functional Design Sessions and estimating completed
- Final negotiations, contracting and approvals are in process and assumed to be complete by March, 2020
- If Detail Design starts in March 2020 for all of the functional areas, it will overlap with the 4th and 5th Migration releases. Coding and Testing would overlap even later releases, forcing most of the functionality to be compressed into the 7th or 8th releases, or later.
- Alternative schedules are under consideration.

# Sandbox Environment



## 18. Adjourn Meeting

---