

# CalsAWS

California Statewide Automated Welfare System

## **Design Document**

CA-48513

Update EDBC Logic to Auto-Test for 4M when  
Youth 18 years or Older Exits Foster Care

CalSAWS	DOCUMENT APPROVAL HISTORY	
	Prepared By	Tisha Mutreja, Renee Gustafson
	Reviewed By	Derek Goering, Prashant Goel, Akira Moriguchi, Geetha Ramalingam, William Baretsky, Priya Sridharan

DATE	DOCUMENT VERSION	REVISION DESCRIPTION	AUTHOR
10/19/2020	1.0	Initial Draft	Tisha Mutreja
12/07/2020	1.1	Draft post review comments from BAs	Tisha Mutreja
12/21/2020	1.2	Updated Draft on further confirmations from BAs	Tisha Mutreja
1/08/2021	1.3	Added Examples to recommendations	Tisha Mutreja
1/08/2021	1.4	Added Flow Chart to Supporting Documents	Tisha Mutreja
1/11/2021	1.5	Added Automated Task Creation	Tisha Mutreja
1/15/2021	1.6	Updated Auto-reassignment logic	Tisha Mutreja
1/19/2021	1.7	Updated task settings and flow charts	Renee Gustafson
1/22/2021	1.8	Automation section added	William Baretsky
1/26/2021	1.9	Household record update added to the criteria	Tisha Mutreja
02/03/2021	2.0	Reviewed with FC and MC Committee: <ol style="list-style-type: none"> <li>1. Added task for CF program on Disc FC case.</li> <li>2. Updated tasks to not generate if the worker on the other program is the FC worker.</li> <li>3. Added recommendation to set the Application Source on FFY and ISP MC program block</li> <li>4. Updated references to the "MC Worker" to instead be "the worker assigned to the MC Program" for clarity</li> <li>5. Added assumption about Batch EDBC FFY MC auto-test.</li> <li>6. Updated flow charts</li> </ol>	Renee Gustafson
02/16/2021	2.1	Updated Worker reassignment to stay with FC worker	Renee Gustafson

DATE	DOCUMENT VERSION	REVISION DESCRIPTION	AUTHOR
		Updated application source in MC program to 'Other'	
02/18/2021	2.2	Added Assumptions 7 and 8. Added criteria for Placement Authority	Renee Gustafson
02/25/2021	2.3	Updated task section to be in the format to add as new task logic, "Automated Action"	Justin Dobbs
02/26/2021	2.4	Corrected the existing FC to MC Auto-test reasons	Renee Gustafson
03/01/2021	2.5	Removed criteria for Placement Authority	Renee Gustafson
03/02/2021	2.6	Removed CF task	Renee Gustafson
03/31/2021	2.7	Added MC NOA Recommendation	Tiffany Huckaby
04/19/2021	2.8	Added FFY Packet Recommendation	Tiffany Huckaby
04/23/2021	2.9	Updated Assumption #1 and added note to 2.1.2.3.iii	Tisha Mutreja

## Table of Contents

- 1 Overview ..... 5
  - 1.1 Current Design..... 5
  - 1.2 Requests..... 6
  - 1.3 Overview of Recommendations..... 6
  - 1.4 Assumptions ..... 6
- 2 Recommendations..... 7
  - 2.1 Eligibility Rules Updates ..... 7
    - 2.1.1 Overview ..... 7
    - 2.1.2 Description of Changes ..... 7
    - 2.1.3 Programs Impacted .....10
    - 2.1.4 Performance Impacts .....10
  - 2.2 Update the Medi-Cal NOA location .....11
    - 2.2.1 Overview .....11
    - 2.2.2 Description of Change.....11

2.3 Update the FFY Aging Out Form to be viewable by all counties.....11

2.3.1 Overview .....11

2.3.2 Description of Change.....12

2.4 Automated Task Creation .....12

2.4.1 Overview .....12

2.4.2 Description of Change.....12

2.5 Automated Regression Test.....14

2.5.1 Overview .....14

2.5.2 Description of Change.....14

3 Supporting Documents .....14

4 Requirements.....15

4.1 Project Requirements.....15

DRAFT

# 1 OVERVIEW

---

This SCR is to streamline the Medi-Cal auto-test process by updating EDBC logic to auto-test for Former Foster Youth (FFY) aid code 4M when a youth 18 years or older exits from Foster Care (FC).

## 1.1 Current Design

Currently, when an individual is discontinued from FC for any of the following reasons, CalSAWS EDBC logic auto-tests the individual for Medi-Cal (MC).

FC Disc Reasons that will MC Auto-Test
Age
Child Eligible to Kin-GAP
Child Not In Placement
Child Returns to Parent
Court Requirement Not Met
Didn't Recert License
Didn't Sign SOF
Doesn't Meet Program Req.
Failed to Complete Determination
Legal Guardian
No longer in Care
Non Fed Caretaker
Over Resources
Parent resides in Foster Home
Petition Not Filed
Requested Disc. - Written
Whereabouts Unknown

The MC auto-test will create a new Medi-Cal Program block in the same case as the FC Program if there is not already an open MC Program block. The Auto-Tested MC individual will either be granted Continuous Eligibility for Children (CEC) with aid code 7J; otherwise, they will receive a 38. If another open MC program block is already on the FC case, the FC discontinued person is added to the existing MC program block as a pending person.

For Requested MC Type 'Former Foster Youth', Medi-Cal EDBC logic creates a budget named, "Former Foster Youth" with Member Role and aid code 4M when the FFY individual is the age of 18 until age 26 years. The System generates a Notice of Action for change/approval to aid code 4M.

CalSAWS Medi-Cal EDBC logic sets the RE Due Date for a MC program with only a FFY individual to the month in which the individual turns 26; if there are any other

individuals on the MC program, the RE Due Date is set to the last day of the month of 'Begin Date + 11 months' where Begin Date is the first day of the EDBC Benefit Month.

**For Example:** If a Medi-Cal application on 02/05/2021 has only an FFY individual in the program block (FFY individual turns 26 on 08/28/2023), the System sets the RE Due Month to 08/2023.

If there is any other non-FFY individual in the same MC program block, the System sets the RE Due Month to 01/2022.

## 1.2 Requests

1. Streamline the process when youth 18 years or older exits Foster Care, by changing EDBC logic to auto-test for Former Foster Youth (4M) Medi-Cal to ensure uninterrupted Medi-Cal benefits. FFY MC applies to individuals in FC on their 18<sup>th</sup> birthday.

## 1.3 Overview of Recommendations

1. Update EDBC logic to auto-test for Former Foster Youth (4M) Medi-Cal when an individual, age 18 or above, is discontinued from the FC program.
  - a. Create a new case for the FFY Medi-Cal.
  - b. Generate the FFY Approval NOA from the new FFY case (and not from the FC case).
2. For FC cases that have a MC program on the case prior to the FFY auto-test, create a task for the worker(s) assigned to the other open programs in the FC case to inform that the FFY individual is discontinued and moved to the newly created MC case. Only create the task if the worker assigned to the MC program differs from the worker assigned to the discontinued FC program.

## 1.4 Assumptions

1. The original LA County CCR received linked to SCR CA-48513 included additional requests for updates to individuals in FFY MC and individuals discontinued from FC as stated above in the Request section. All the other requests in the CCR will be implemented with future SCR CA-220233 and will follow the regular prioritization process.
2. There are no changes to how EDBC sets the Medi-Cal RE Due Date. It will follow current functionality.
3. The auto-test logic will not be suppressed if the physical address is out of state. The System will follow existing functionality to auto-test a Medi-Cal program and then discontinue the MC individual for 'Calif. Residence'.
4. The auto-test logic will copy over the mailing/physical address from the discontinued Foster Care case to the newly created Medi-Cal case.
5. FC cases processed in Batch EDBC in 'All Programs' mode (or 'Partial Programs' with FC and MC) will follow the new FFY MC Auto-Test logic, if appropriate, and Batch EDBC will Accept and Save the FC program and the auto-tested MC program(s) using existing Batch EDBC logic.

6. Foster Care cases marked 'Confidential' will go through the new FFY auto-test process and the new MC case will NOT be marked 'Confidential'.
7. The FFY auto-test logic will keep the FC worker assigned to the MC Program in the new MC Case. The Foster Care worker will reassign the MC Program to the appropriate worker based on County business process.
8. Existing NOA generation/population logic will not be updated with this effort with the exception of the Case ID.
9. CA-227766 will update the FFY Packet to generate for all counties.
10. The MC NOA will not be printed via the Preview NOA and will be printed locally only when the option to 'Print Locally' is available on Save and Continue on the new Case for Medi-Cal.
11. Medi-Cal NOAs that are 'Rejected' via the Preview NOA will also be moved to the new Med-Cal case.

## 2 RECOMMENDATIONS

---

### 2.1 Eligibility Rules Updates

#### 2.1.1 Overview

Update EDBC logic to auto-test for Former Foster Youth (4M) Medi-Cal when an individual age 18 or above is discontinued from the FC program.

#### 2.1.2 Description of Changes

1. Update Medi-Cal EDBC auto-test logic to identify if the discontinued FC individual will follow the new FFY auto-test logic as follows:
  - a. The discontinued FC individual is age 18 or older as of the discontinuance effective date.
2. Create FFY auto-test logic with below details:
  - a. Create a new MC program in the FC case with the discontinued FC individual.
    - i. Assign the FC worker to the MC program
    - ii. Set the Requested MC Type to 'Former Foster Youth' for the FFY individual

**Note:** The existing MC EDBC logic will grant the FFY individual the 4M aid code, 'Member' Role and a 'Former Foster Youth' budget.
    - iii. Set the FFY individual as the primary applicant
    - iv. Set the Application Source as 'Other'
    - v. Set the Application Date for the MC program and program person(s) to the system date (calendar date)
    - vi. Set the Beginning Date of Aid (BDA) to the first of the month after the FFY individual is discontinued from FC.

**For example:** If the FFY individual was discontinued on FC case effective 02/2021 and auto-tested to the new MC case on 01/07/2021, the Medi-Cal Application Date will be set as 01/07/2021, and BDA as 02/01/2021.

**NOTE:** This MC program block will be referred to as the "FFY MC program block" from here forward.

- b. Create a separate MC program block with the **FC MMO** Infant Supplement Payment (ISP) child(ren), if any, with below details:
  - i. Assign the FC worker to the MC program
  - ii. Set the Requested MC Type as 'Medi-Cal'
  - iii. Set the FFY individual as the primary applicant
  - iv. Set the Application Source as "Other"**
  - v. Set the Application Date for the MC program and program person(s) to the system date (calendar date)
  - vi. Set the BDA to the first of the following month after the FFY individual is discontinued from FC
    1. Update EDBC logic for FC MMO ISP child(ren) with a FFY parent, to create a budget as 'Auto-test Medi-Cal' with Role as 'MEM' and aid code as '7J'

**NOTE:** This MC program block will be referred to as the "ISP MC program block" from here forward.

3. Update 'Save and Continue EDBC' logic to move the auto-tested FFY MC program, and ISP MC program if any, to a new MC case from the discontinued FC case as follows:
  - a. Create a new MC case with new case number:
    - i. Copy the FFY individual, and ISP child(ren) if any, into the new MC case.
    - ii. Move the Active FFY MC program block, and Active ISP MC program block if any, from the discontinued FC case to the MC case.
    - iii. No change to the worker(s) assigned to the MC program(s).**  
Note: Per existing logic, the assigned worker will receive new assignment indicator from the workload inventory page
    - iv. Do not copy the Foster Care program nor the Foster Care Resource (from the Child Placement) from the discontinued FC case to the MC case.
    - v. Create a new household record for each individual as "In the Home" and set Begin Date as system date (calendar date).
    - vi. Do not copy the 'Confidential' designation from the FC case to the new MC case, if any.**



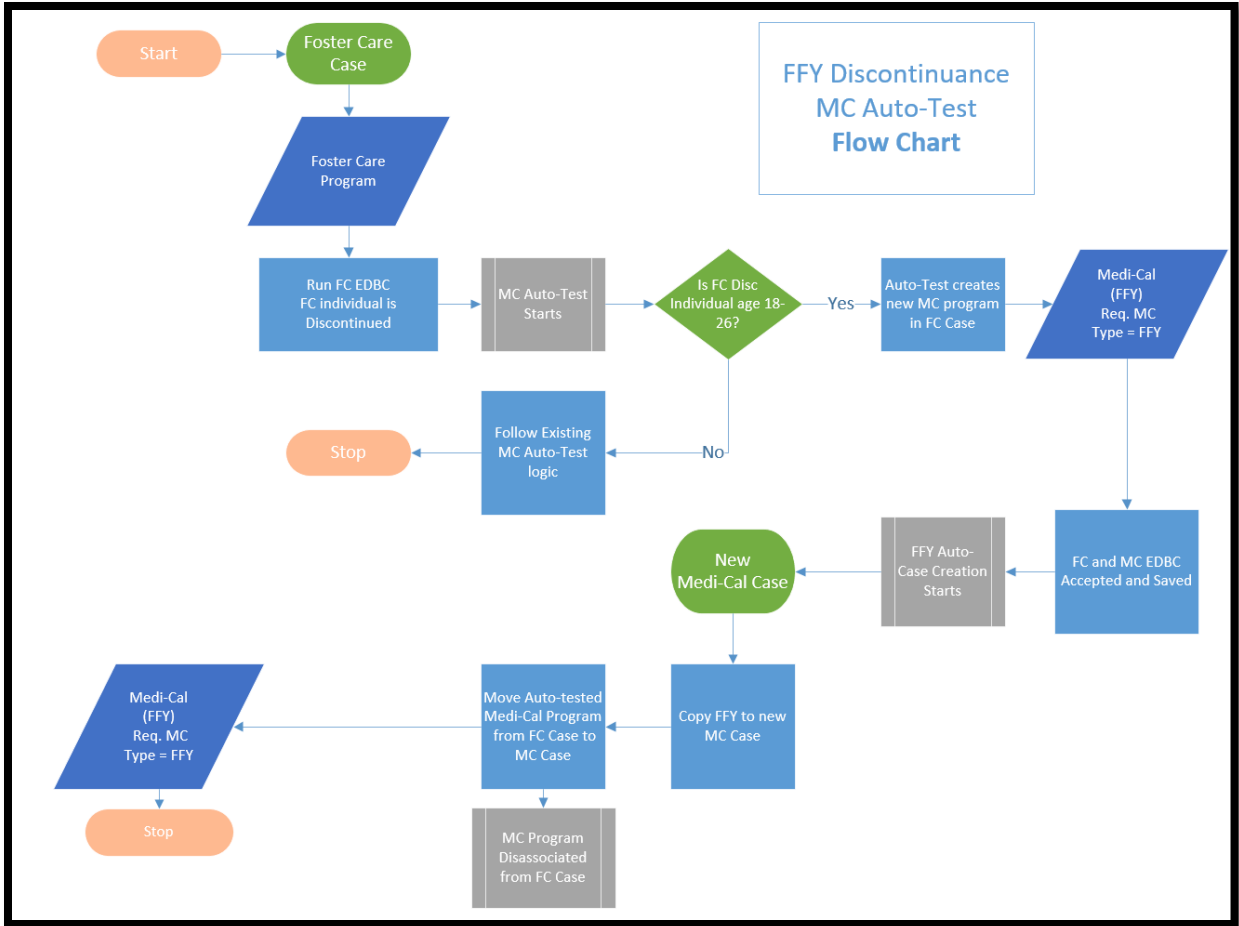


Figure 2.1 - Example Flow Chart for FFY Auto-Discontinuance

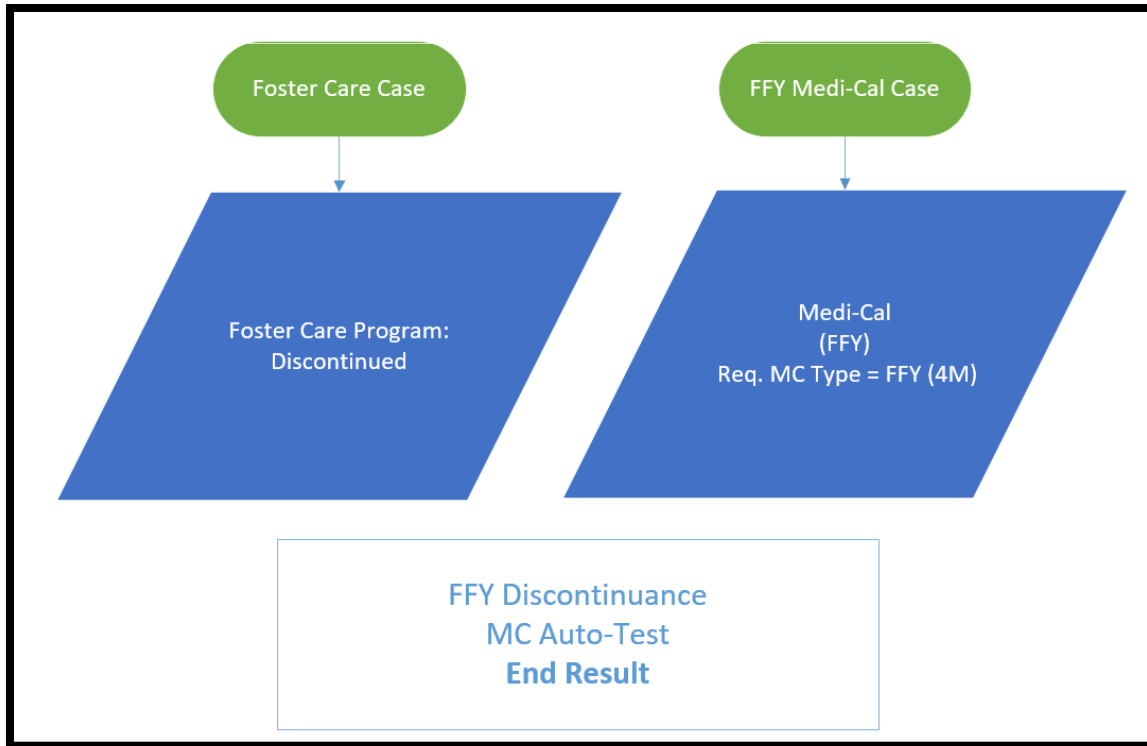


Figure 2.2 - End Result of FFY Auto-Discontinuation

NOTE: Additional flow charts are attached in Supporting Documents for reference.

4. Create a Journal entry in the new MC case created by the FFY auto-test logic.

The Journal Entry will be displayed as follows on Journal Detail page:

**Journal Category:** Activity

**Journal Type:** Eligibility

**Short Description:** MC Case created from FFY Discontinuance MC Auto-Test

**Long Description:** Case created by Medi-Cal Auto-Test when an individual, age 18 or older, was discontinued from the Foster Care program

**Note:** There will be one journal entry per case.

### 2.1.3 Programs Impacted

Medi-Cal, Foster Care

### 2.1.4 Performance Impacts

N/A

## 2.2 Update the Medi-Cal NOA location

### 2.2.1 Overview

The auto-test MC EDBC will be moved into a new Case with this effort. The NOA(s) that generated off the auto-test MC EDBC will need to also move to the new Case with the MC program. No Medi-Cal NOA from the auto-test will be visible on the Foster Care case.

See Supporting Document #2 for NOA Reasons that are expected to generate from the auto-test MC EDBC.

### 2.2.2 Description of Change

1. Add NOA logic at EDBC save and continue when generating a NOA from the auto-test MC EDBC. If a newly created MC NOA (see list of NOAs from Supporting Document #2) has generated check the associated EDBC's Case ID and if the Case ID differs from the Generated Document Case ID for the NOA:

- a. Update the Case ID for the Generated Document to match the EDBC Case ID.
- b. Update the Case Number NOA variable population in NOA\_SNIPPET\_VAR to match the new Medi-Cal Case Number (SERIAL\_NUM\_IDENTIF).
- c. Remove the previously created PDF of the NOA from the database (remove the ALF\_FMS\_NUM from Generate Documents). Note: This will allow the NOA to be generated with the new case variable population.

## 2.3 Update the FFY Aging Out Form to be viewable by all counties

### 2.3.1 Overview

The Former Foster Youth Aging Out Form (FFY MC Cover Letter) is currently available in Template Repository in CalSAWS but only visible to LA county. This recommendation will update the form to be viewable in Template Repository for all counties.

**State Form:** Upcoming Change to Your Medi-Cal Coverage per ACWDL 15-32

**Current Programs:** Medi-Cal

**Current Attached Form(s):** N/A

**Current Form Category:** Forms

**Current Template Repository Visibility:** LA County Only

**Existing Languages:** English

### 2.3.2 Description of Change

Update the FFY Aging Out Form (ID: 6027) to be visible to all counties in Template Repository (DOC\_TEMPL.TEMPL\_COUNTY\_CATGRY\_CODE = 'ALL').

See Supporting Documents #3 for existing CalSAWS FFY Aging Out Form.

## 2.4 Automated Task Creation

### 2.4.1 Overview

For FC cases that have a MC program on the case prior to the FFY auto-test, create a task for the worker(s) assigned to the other open program in the FC case to inform that the FFY individual is discontinued and moved to the newly created MC case. Only create the task if the worker assigned to the MC program differs from the worker assigned to the discontinued FC program.

### 2.4.2 Description of Change

1. Create a new Automated Action named, "Medi-Cal Program: Exists on Discontinued Foster Care Case" based on the following:

**a. Task Type:**

Create the following Task Type for Los Angeles county to be associated to the Automated Action. The following attributes will be associated to the Task Type and viewable on the Task Type Detail page:

**i. Task Type Information**

- Name: Open MC program on Discontinued FC Case
- Category: Case Update
- Priority: Medium
- Available Online: No
- Available for Automation: Yes
- Instructions: BLANK
- Expire Tasks: Yes
  - Expiration Period: 90 days
  - Expiration Type: After Task is Created
- Newly Assigned Indicator: Tasks display indicator for 5 day(s)

**b. Automated Action:**

Create a new Automated Action for each of the 58 CalSAWS counties (excluding Los Angeles county) as specified below.

For the C-IV and CalWIN counties, configure the Automated Action initially as 'Inactive' with a blank Task Type.

**Note:** As counties migrate into CalSAWS, counties have the option to Activate this Automated Action at which time the Automated Action Detail page will enforce selection of an appropriate Task Type.

The following attributes are viewable on the Automated Action Detail page.

i. Action Information

- Name: Medi-Cal Program: Exists on Discontinued Foster Care Case
- Type: Create Task
- Status: Active
- Program(s): MC
- Run Date: Daily(Mon-Fri) or Real Time
- Source: Batch/Online
- Scenario: A Foster Care program was Discontinued with an open Medi-Cal program existing on the case.

ii. Task Information

- Task Type: Open MC program on Discontinued FC Case
- Task Sub-Type: BLANK
- Due Date: Default Due Date
- Default Due Date: 10 business days
- Initial Assignment: Default Assignment
- Default Assignment: Current Medi-Cal Program Worker
- Long Description: The FC individual was discontinued and auto-tested to FFY on a separate Medi-Cal case. Review the Medi-Cal individual(s) on this case to determine if they should also move to the new Medi-Cal case.

**c. Trigger Condition**

Update the EDBC Save and Continue to invoke the above Automated Action when the FC discontinuance resulted in a new MC case from the FFY auto-test as described in Recommendation 2.1.2.3 and there still remains an open MC program on the FC case.

## 2.5 Automated Regression Test

### 2.5.1 Overview




Create a new script to verify the new final result when accepting and saving a Foster Care EDBC that discontinues an individual who is 18 or older to verify the movement of the Medi-Cal program to a separate case.


### 2.5.2 Description of Change

Create a new script to verify the new final result when accepting and saving a Foster Care EDBC that discontinues an individual who is 18 or older:

1. No Medi-Cal program is present on the Foster Care case
2. No Medi-Cal EDBC results are visible on the Foster Care case
3. The auto-tested Medi-Cal program is present on a new second case:
  - a. Requested Medi-Cal Type is "Former Foster Youth" for each applicant
  - b. Program status is "Active"
  - c. Person status is "Active" for each applicant
4. The auto-tested Medi-Cal EDBC result is visible on this second case:
  - a. Status is "Active"
  - b. Aid Code is "4M" for each applicant

## 3 SUPPORTING DOCUMENTS

Number	Functional Area	Description	Attachment
1	Eligibility Rules	Flow charts explaining the MC auto-test process from recommendation 2.1.2	 FFY Auto-Test.pdf
2	NOA	Expected NOAs to generate from the auto-test MC EDBC	 CA-48513 - Impacted NOAs.xlsx
3	Form	Former Foster Youth Aging Out Form	 FFYAGINGOUT.pdf

4	CCR Request	Original Request from LA County	 CCR Request.docx
---	-------------	---------------------------------	---

## 4 REQUIREMENTS

---

### 4.1 Project Requirements

REQ #	REQUIREMENT TEXT	How Requirement Met
2.4.3.17	The LRS shall continue processing the application for any remaining programs if, at any point in time, the information collected results in ineligibility for one or more programs	Updated EDBC auto-test logic to create a new case with a Medi-Cal program when an individual, age 18 or older, is discontinued from the FC program