

CalSAWS GA/GR Exstream Design Manager – AWS Login Instructions

Introduction:

As part of the migration of CalWIN counties to CalSAWS, the CalSAWS counties start developing Exstream templates using the same Exstream Design Manager application version 16.6.3 used in CalWIN today, the only change will be to create a connection to GA/GR Exstream Design Database.

NOTE: These instructions can only be used by CalSAWS Wave 1 counties (Placer and Yolo) starting on Monday (10/31/2022) with the Go-Live preparations of PPM-54589 “GA/GR Notices (Correspondence) Service”.

Steps to Test Connectivity:

Note: If you are an existing CalWIN county Exstream user, then you can skip step 1 through 10.

1. Download **ONE** rdp file as per the following allocation:

Users from **Alameda, Contra Costa, Fresno, Orange, Placer, Sacramento, WCDS** will download **“AWS-1 Prd Exstream.rdp”**

Users from **Hummable Translations, San Diego, San Francisco, San Luis Obispo, San Mateo, Santa Barbara, Santa Clara** will download **“AWS-2 Prd Exstream.rdp”**

Users from **Santa Cruz, Solano, Sonoma, Tulare, Ventura, Yolo** will download **“AWS-3 Prd Exstream.rdp”**

2. Copy **ONE** assigned rdp file to your desktop. These are the same RDPs as in CalWIN today.



AWS-1 County
Exstream.rdp



AWS-2 County
Exstream.rdp



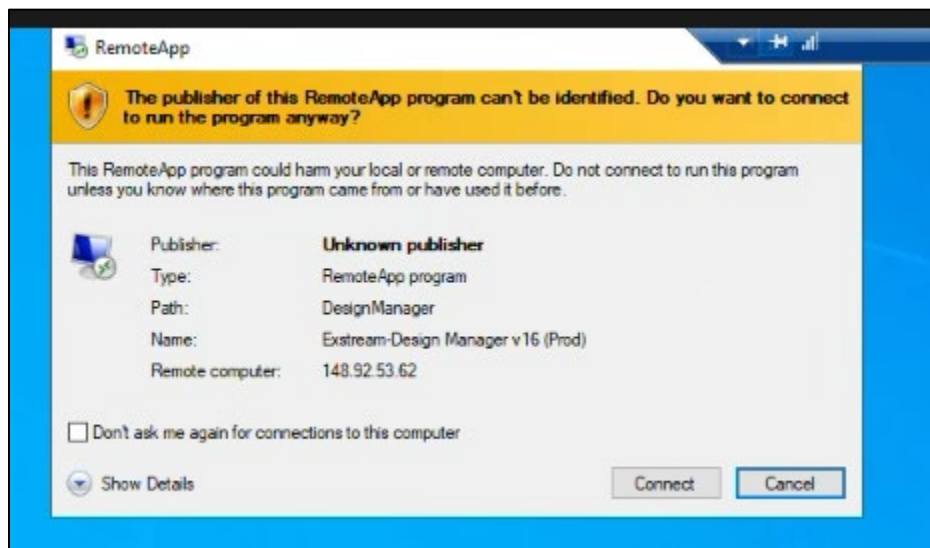
AWS-3 County
Exstream.rdp

CalSAWS GA/GR Exstream Design Manager – AWS Login Instructions

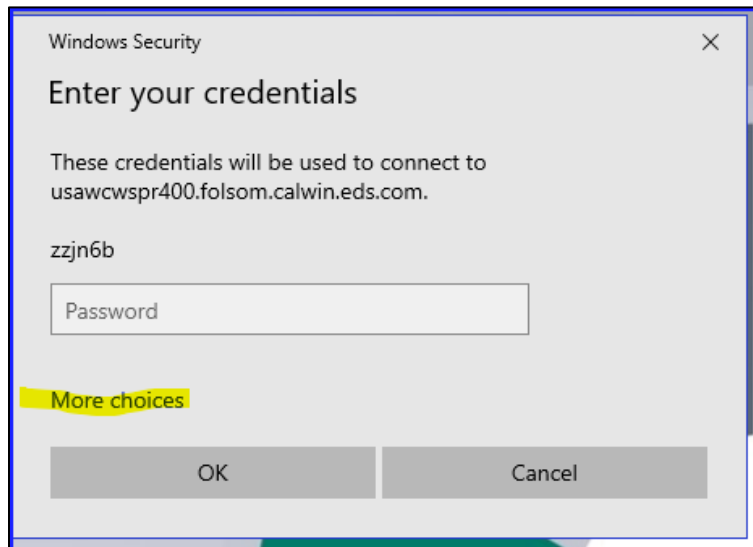
3. Double click on the RDP icon on your desktop to start the login process (as you do today).



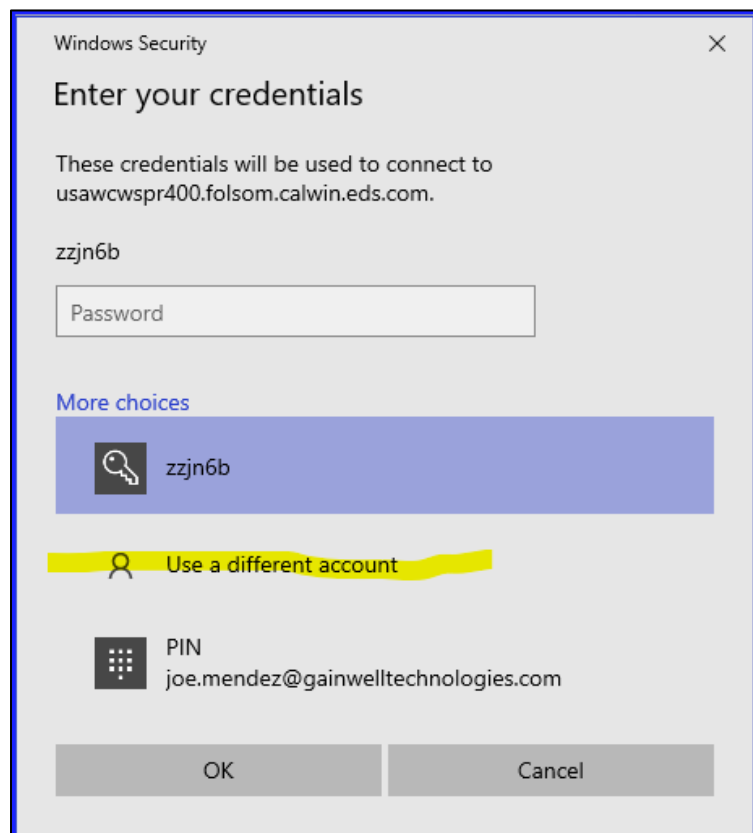
4. Click on the Connect button. Note the version “v16 (Prod)”



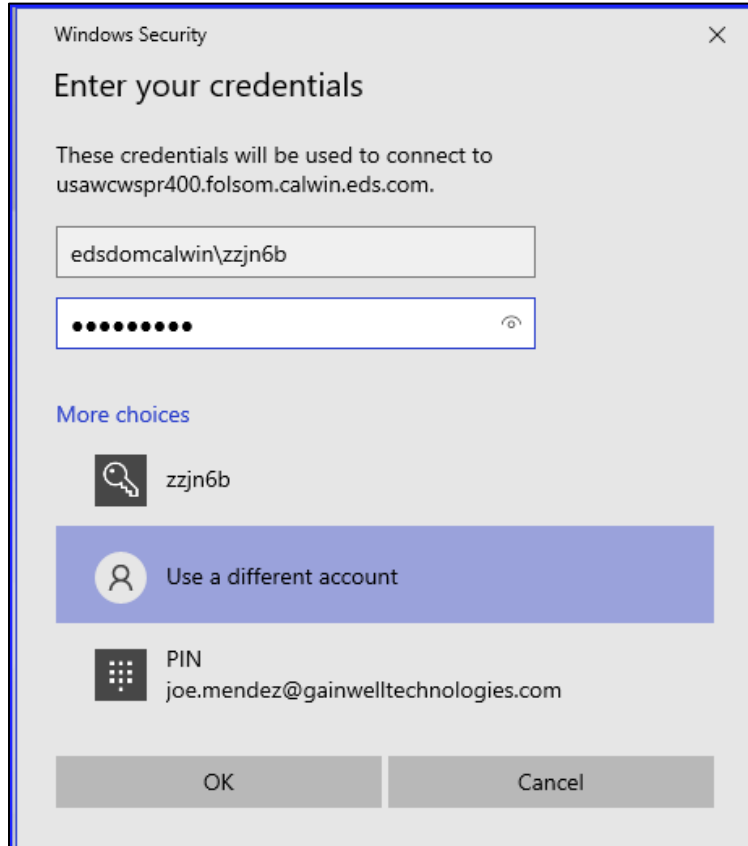
5. The first time you log in, you will need to select “More choices”



6. Then select “User a different account”

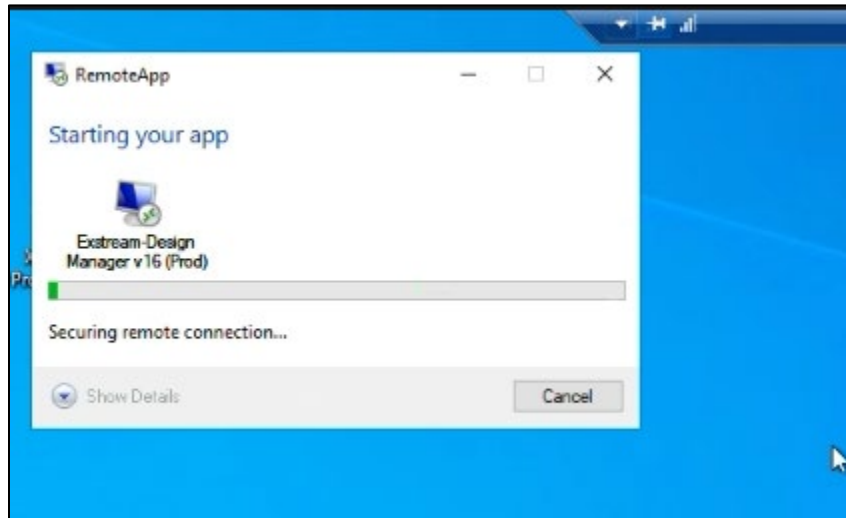


7. Enter your EDSDOMCALWIN credentials

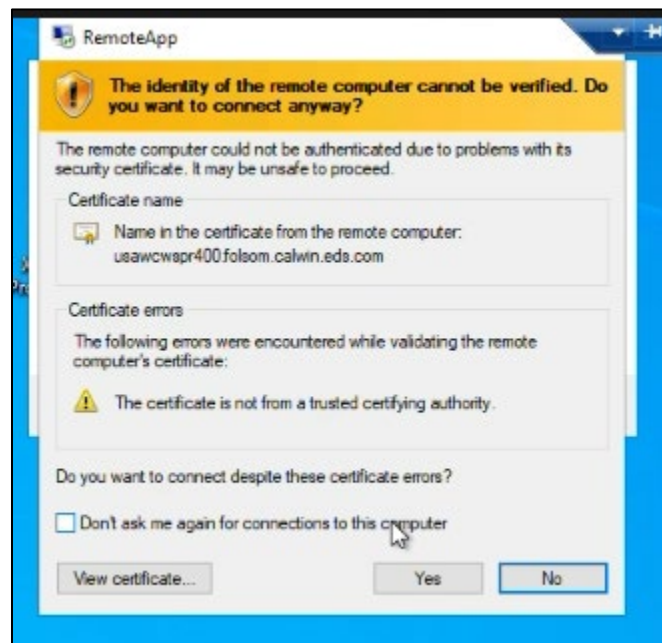


CalSAWS GA/GR Exstream Design Manager – AWS Login Instructions

8. You will observe this window. The first-time logging in takes about 1 minute.

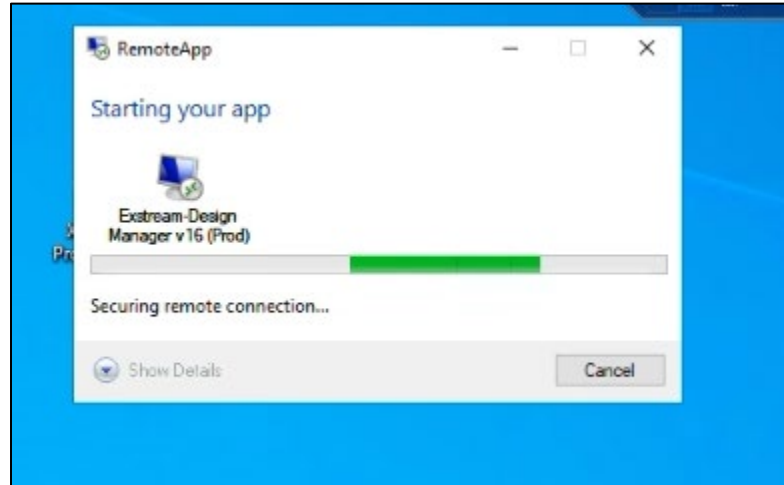


9. Check the “Don’t ask me again. . .”, then click Yes on this window



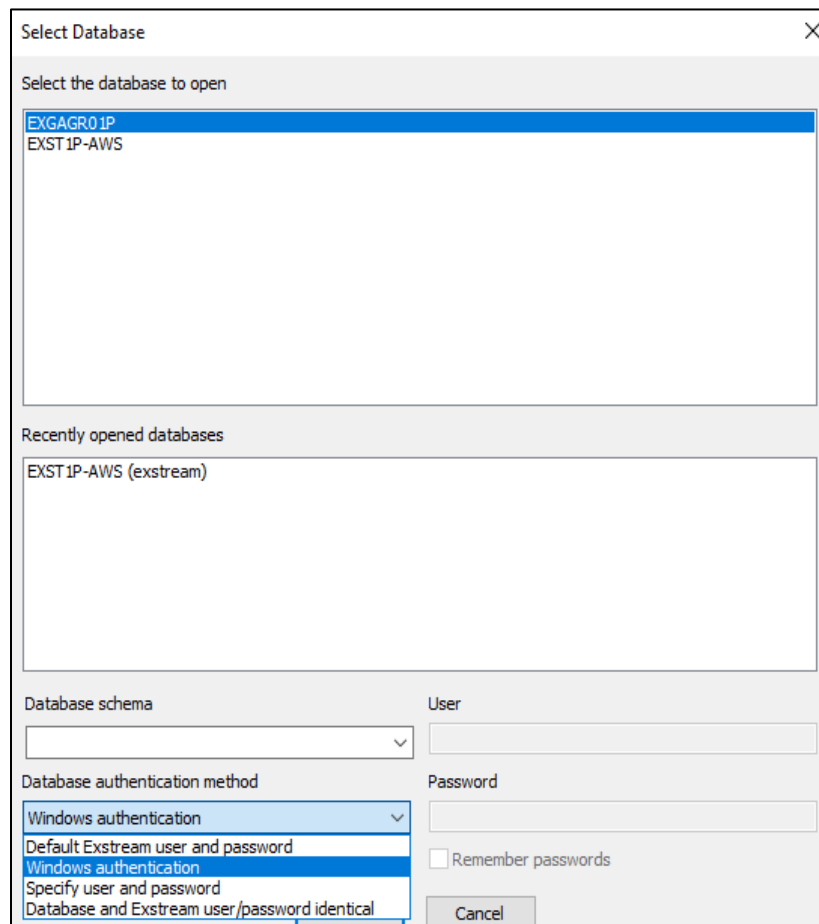
CalSAWS GA/GR Exstream Design Manager – AWS Login Instructions

10. Wait for the “Starting your app” window to finish.



11. On this “Select Database” window

11.a. Select “EXGAGR01P” database and “Windows Authentication” in the “Database Authentication Method” drop down list in the lower left corner of the window.



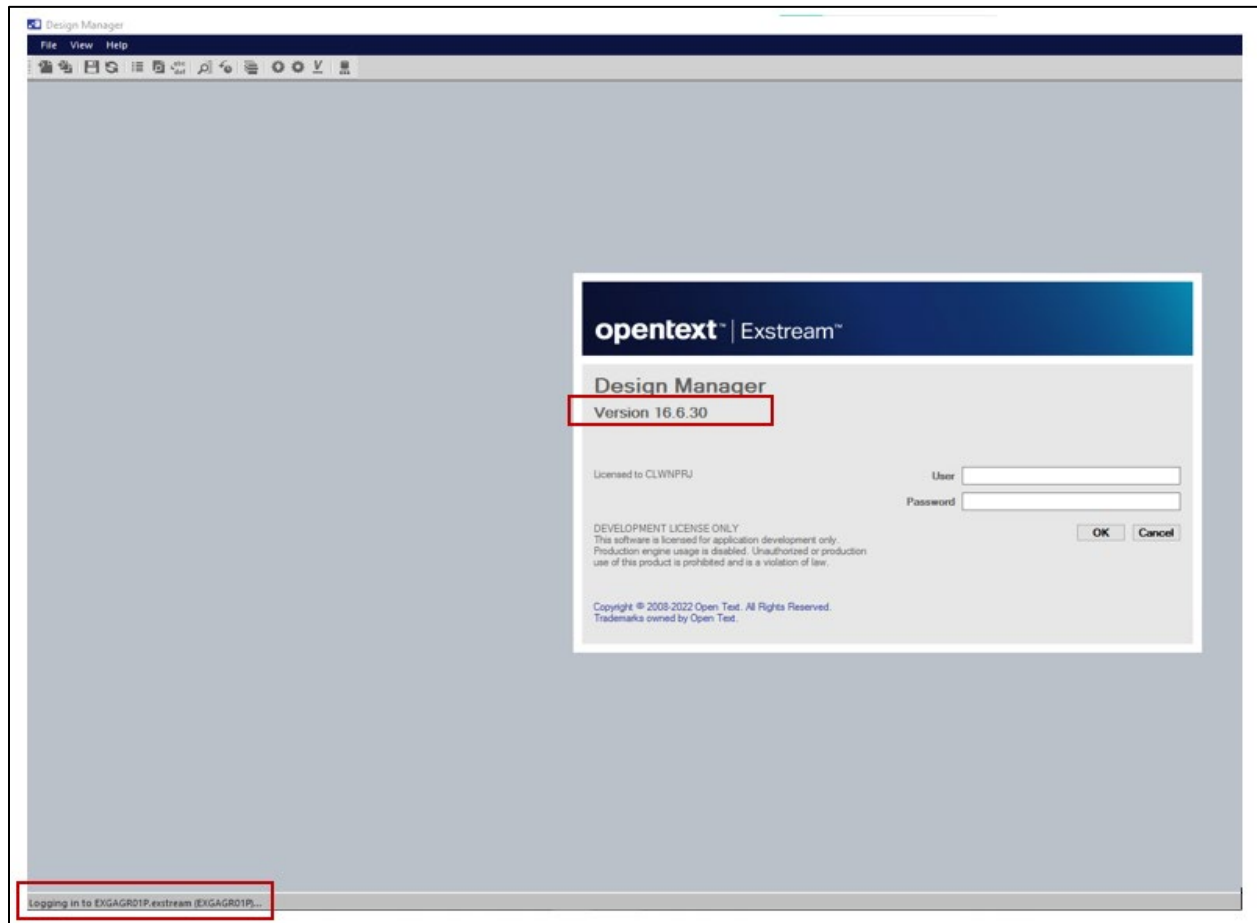
11.b. Select “exstream” in the “Database Schema” drop down list.

The screenshot shows a 'Select Database' dialog box with a close button (X) in the top right corner. The dialog is divided into several sections:

- Select the database to open:** A list box containing two entries: 'EXGAGR01P' (highlighted in blue) and 'EXST1P-AWS'.
- Recently opened databases:** A list box containing one entry: 'EXST1P-AWS (exstream)'.
- Database schema:** A dropdown menu with 'exstream' selected and highlighted in blue.
- Database authentication method:** A dropdown menu with 'Windows authentication' selected.
- User:** An empty text input field.
- Password:** An empty text input field.
- Remember passwords:** An unchecked checkbox.
- Buttons:** 'OK' and 'Cancel' buttons at the bottom.

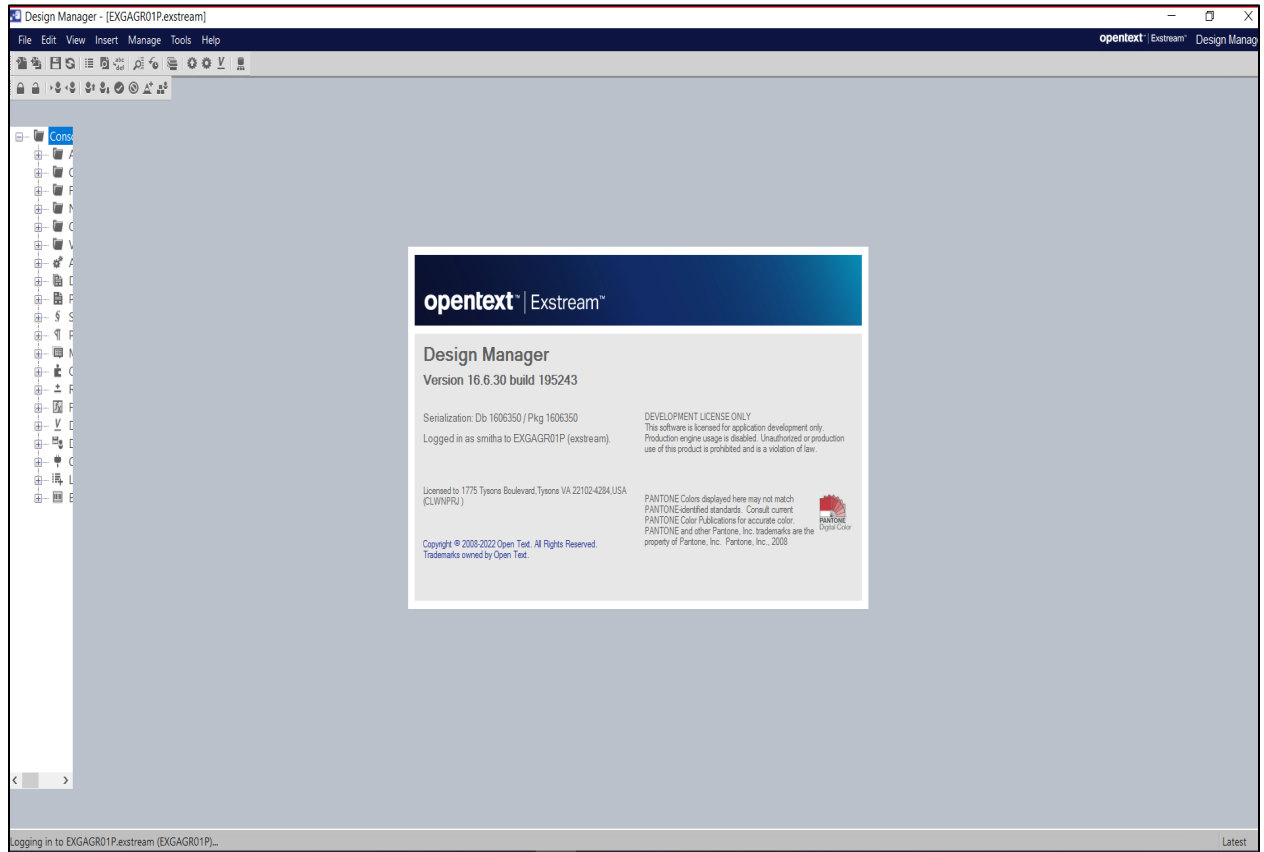
CalSAWS GA/GR Exstream Design Manager – AWS Login Instructions

12. Log into Exstream Design Manager using your current Exstream application credentials. Note that you are now in:
- Design Manager Version **16.6.3**
 - And are now logging into “**EXGAGR01P**” Designer DB (lower left corner of the image)

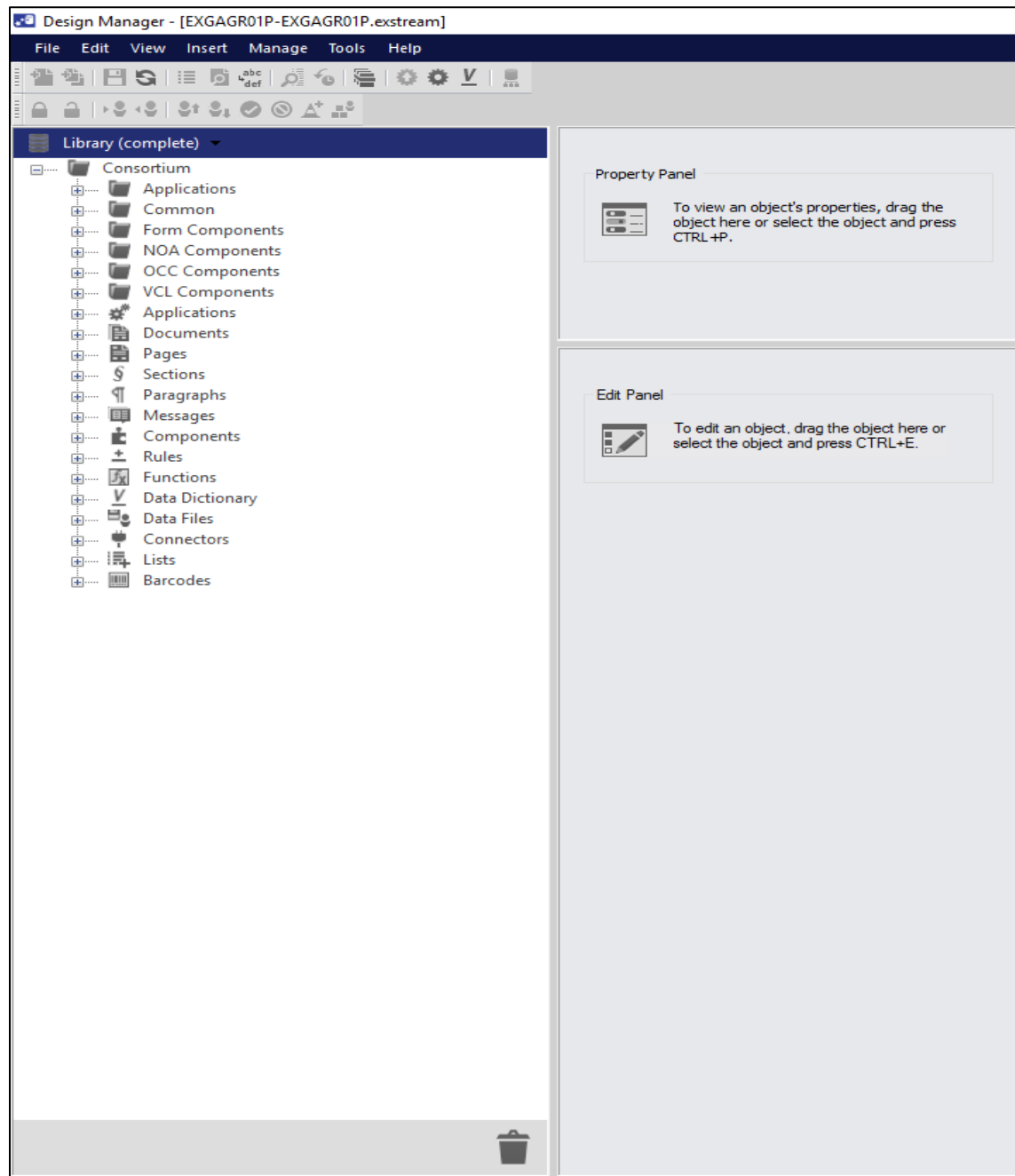


CalSAWS GA/GR Exstream Design Manager – AWS Login Instructions

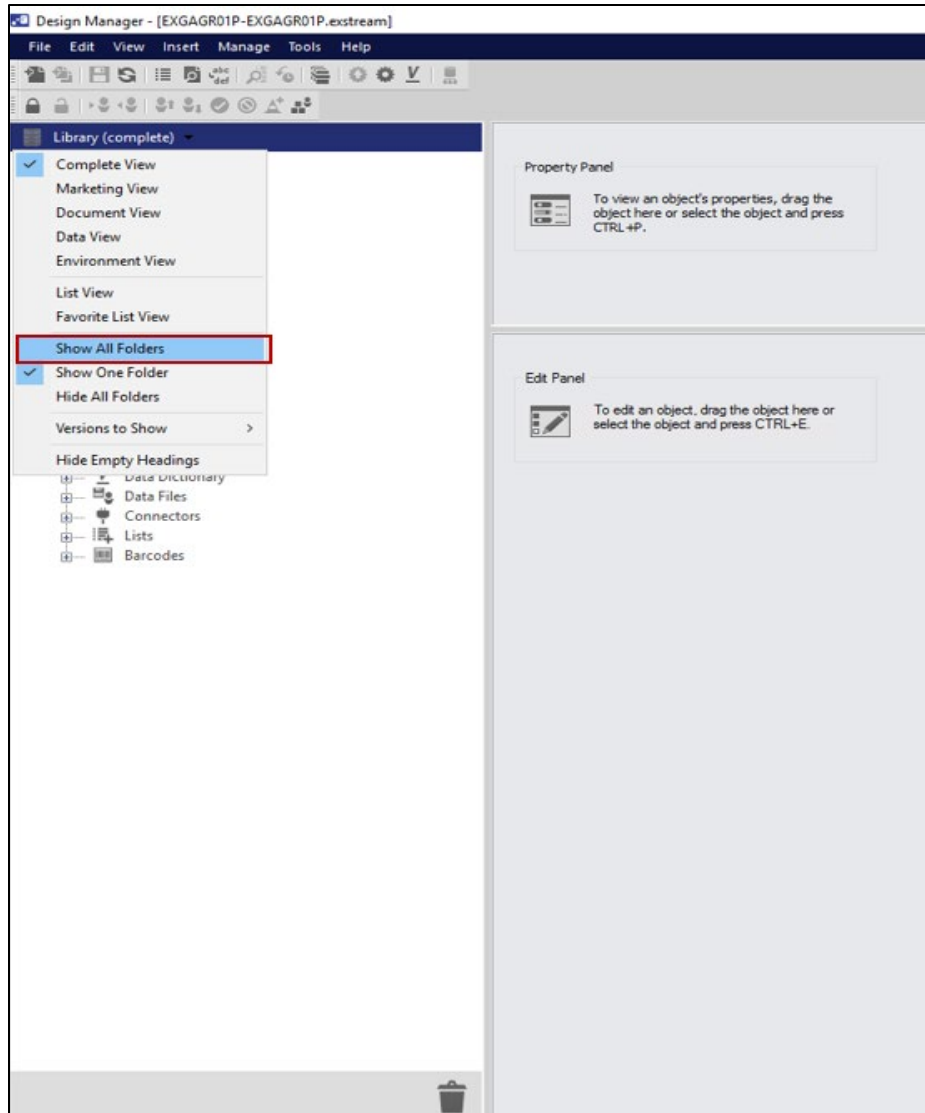
13. You will see a splash window with “OpenText Exstream” . . . “Version 16.6.3”. This confirms you have logged into the new Exstream application in AWS.

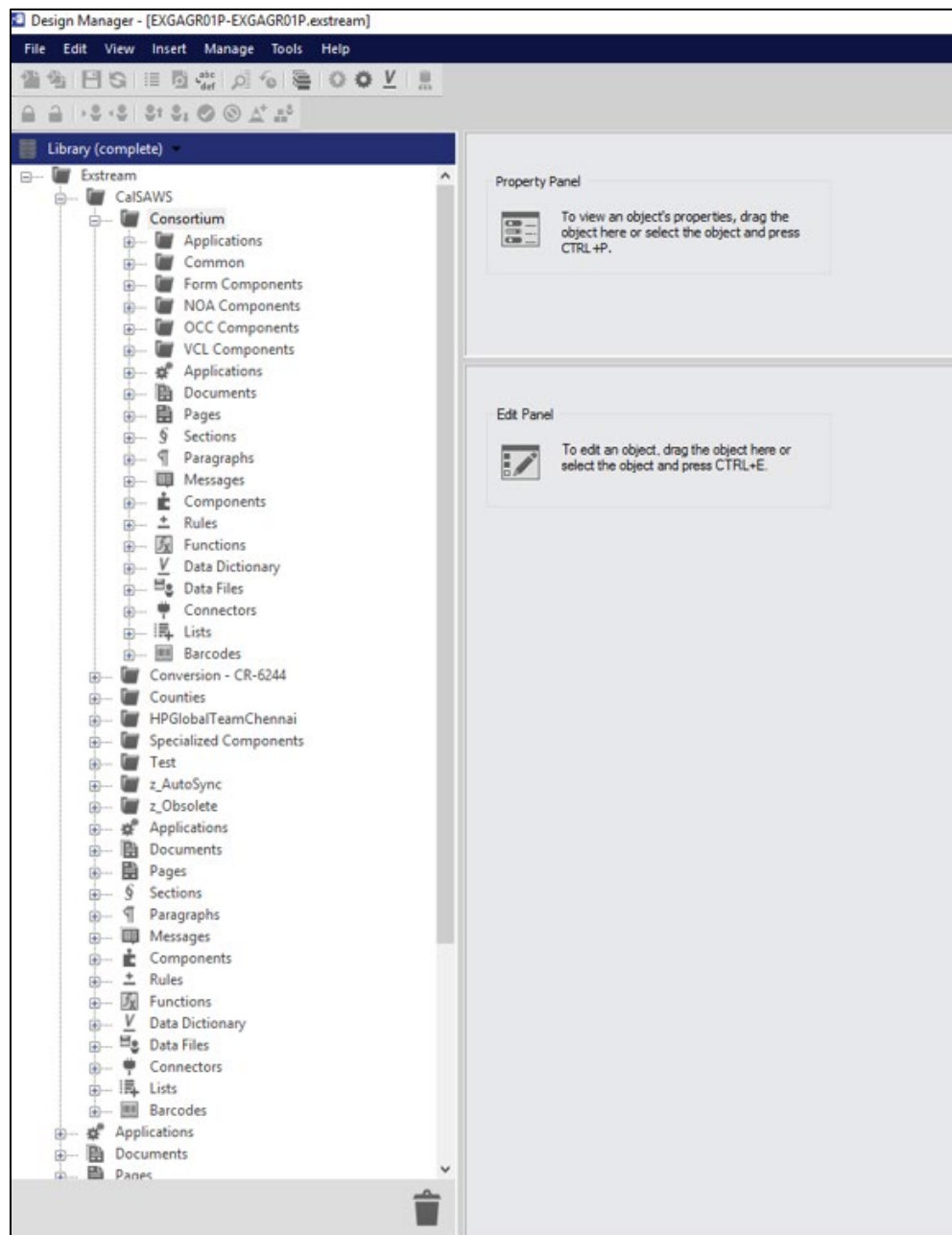


14. At this point, you have successfully logged into GA/GR Exstream Design Manager and you can proceed with your normal Exstream Designer activities.



CalSAWS GA/GR Exstream Design Manager – AWS Login Instructions





Congratulations!

You have successfully logged into the new GAGR Exstream design environment.

For any login support:

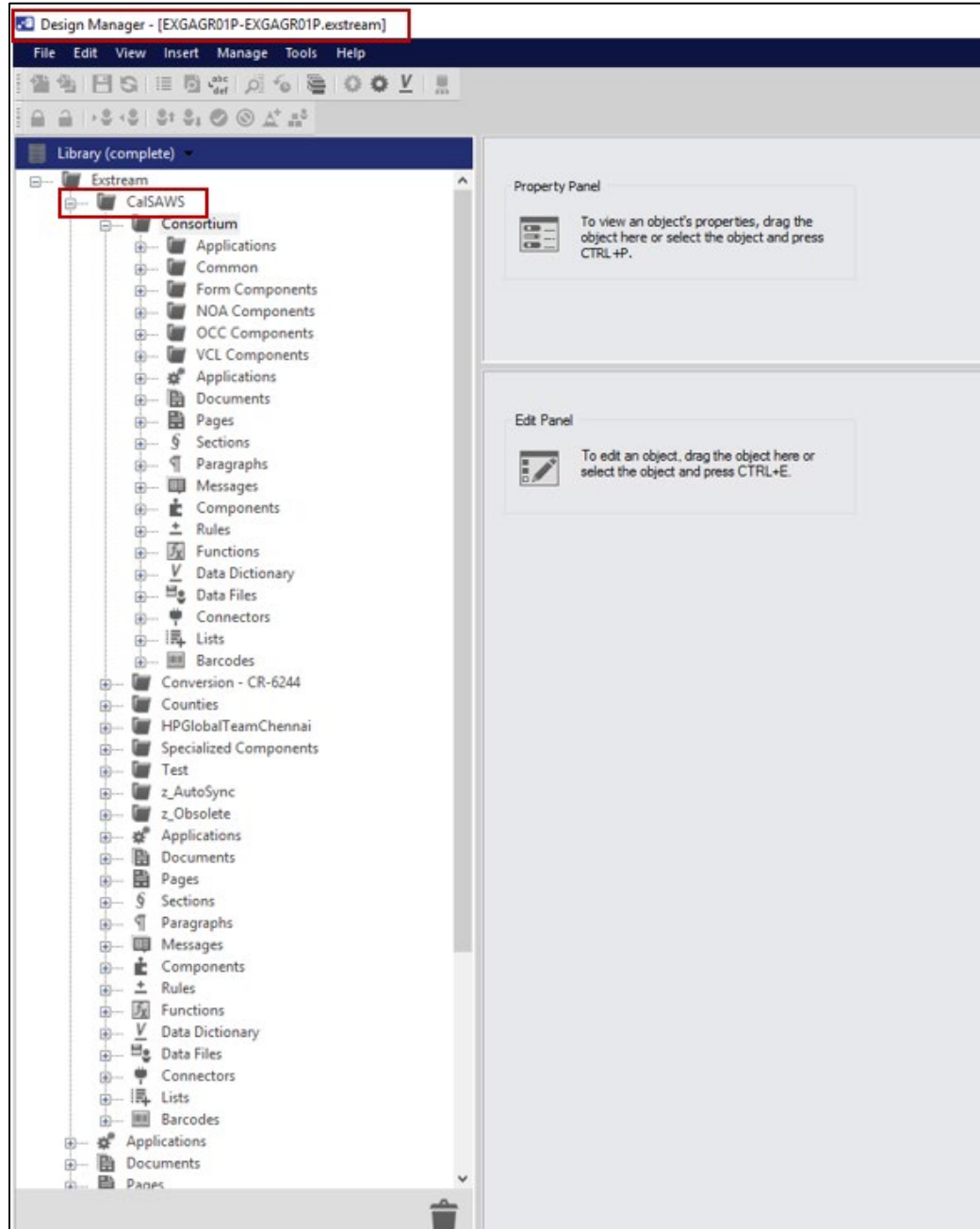
Please open an SR, then request that the help desk assign it to Nisma Gurung.

Note: Each time you log in, please double check the Exstream database you are connecting to:

- CalWIN database = EXST1P or
- CalSAWS database = EXGAGR01P

CalSAWS GA/GR Exstream Design Manager – AWS Login Instructions

On this screenshot you can see you are logged into the **CalSAWS** GA/GR Exstream Database.



CalSAWS GA/GR Exstream Design Manager – AWS Login Instructions

On this screenshot you can see you are logged into the **CalWIN** Exstream Database.

