

CalSAWS

California Statewide Automated Welfare System

Design Document

CA-238402

Turn off Work Participation Rate (WPR)
Unengagement Dashboard in QLIK

CalSAWS	DOCUMENT APPROVAL HISTORY	
	Prepared By	Stephen Hilliard
	Reviewed By	Thao Ta

DATE	DOCUMENT VERSION	REVISION DESCRIPTION	AUTHOR
12/20/2021	1.0	Initial Document	Stephen Hilliard
12/20/2021	1.1	Updated document to expand on the recommendations and to sync up with CalSAWS design document standards.	Thao Ta

Table of Contents

1	Overview	5
1.1	Current Design	5
1.2	Requests	5
1.3	Overview of Recommendations	5
1.4	Assumptions	5
2	Recommendations	6
2.1	Turn off WPR Unengagement Dashboard Link from Online Page	6
2.1.1	Overview	6
2.1.2	Description of Change.....	6
2.1.3	Dashboard Page Location	6
2.1.4	Counties Impacted	7
2.2	Disable WPR Unengagement Batch Jobs	7
2.2.1	Overview	7
2.2.2	Description of Change.....	7
2.2.3	Counties Impacted	7
2.3	Update WPR Homepage Dashboard.....	7
2.3.1	Overview	7
2.3.2	WPR Homepage Dashboard Mockup.....	7
2.3.3	Description of Change.....	8
2.3.4	Dashboard Page Location	9
2.3.5	Counties Impacted	9
2.4	Update WPR Engagement Trend Dashboard.....	9
2.4.1	Overview	9
2.4.2	WPR Engagement Trend Dashboard Mockup.....	9
2.4.3	Description of Change.....	10
2.4.4	Dashboard Page Location	10
2.4.5	Counties Impacted	11
2.5	Remove Unengagement Dashboard Button from All Other WPR Dashboards ..	11
2.5.1	Overview	11
2.5.2	WPR Dashboard Navigation Mockup.....	11
2.5.3	Description of Change.....	11
2.5.4	Dashboard Page Location	12

2.5.5	Counties Impacted	12
3	Supporting Documents	12
4	Requirements	12
4.1	Project Requirements	12
4.2	Migration Requirements	13
5	Migration Impacts.....	13
6	Appendix.....	13

1 OVERVIEW

This design outlines the request to decommission the Work Participation Rate (WPR) Unengagement Dashboard in QLIK.

1.1 Current Design

In CalSAWS there is a WPR Unengagement Dashboard which displays Work Participation Rate/Welfare to Work information for cases with Unengagement. This dashboard was originally a C-IV dashboard and was replatformed in QLIK and made available to all 40 CalSAWS counties.

The dashboard loads hundreds of millions of records and takes up a lot of capacity in the batch job run each night, which takes up run time and resources to process other jobs. In the past 45 days, no user has accessed the dashboard, confirming with usage data that this dashboard is not being used.

1.2 Requests

The request is to turn off the WPR Unengagement Dashboard and turn off the associated batch jobs.

1.3 Overview of Recommendations

1. Remove link to the WPR Unengagement Dashboard from the CalSAWS Business Intelligence DPSSTATS online page.
2. Turn off the associated batch jobs for the WPR Unengagement Dashboard.
3. Update the WPR Homepage Dashboard to remove the "Unengagement by Organization" widget and the "People with Breaks In Activities" widget.
4. Update the WPR Engagement Trend Dashboard to remove the "People with Break Trends" widget.
5. Remove links to the WPR Unengagement Dashboard from the other WPR Dashboards in QLIK:
 - a. WPR Homepage
 - b. WPRD
 - c. WPRD Trend
 - d. WPRD Status
 - e. Engagement Trend
 - f. Initial Engagement and Attendance
 - g. Program Hours
 - h. Program Trend

1.4 Assumptions

1. No other dashboards will be impacted by this change.
2. The data in this WPR Unengagement dashboard is available in other reports (WPR On-Request Report) as well as the Welfare to Work Dashboards available in QLIK.

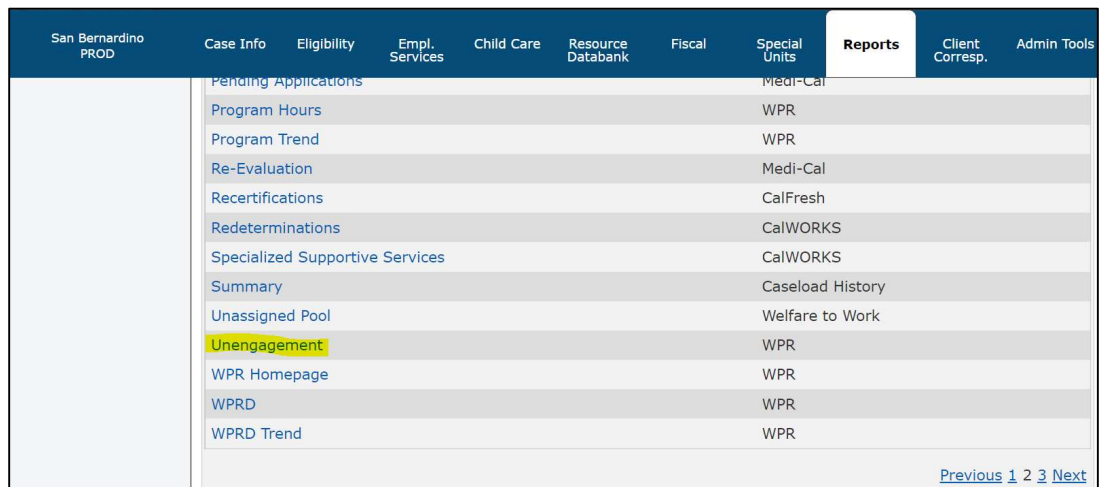
2 RECOMMENDATIONS

This SCR recommends decommissioning the WPR Unengagement Dashboard. It entails removing the link, turning off the batch jobs, and removing related widgets from other dashboards that use the WPR Unengagement data.

2.1 Turn off WPR Unengagement Dashboard Link from Online Page

2.1.1 Overview

The WPR Unengagement Dashboard link will be removed from the Business Intelligence DPSSSTATS Online page.



San Bernardino PROD	Case Info	Eligibility	Empl. Services	Child Care	Resource Databank	Fiscal	Special Units	Reports	Client Corresp.	Admin Tools	
	Pending Applications							Medi-Cal			
	Program Hours							WPR			
	Program Trend							WPR			
	Re-Evaluation							Medi-Cal			
	Recertifications							CalFresh			
	Redeterminations							CalWORKS			
	Specialized Supportive Services							CalWORKS			
	Summary							Caseload History			
	Unassigned Pool							Welfare to Work			
	Unengagement							WPR			
	WPR Homepage							WPR			
	WPRD							WPR			
	WPRD Trend							WPR			

[Previous](#) [1](#) [2](#) [3](#) [Next](#)

Figure 2.1.1- The link highlighted in yellow will be removed from the Business Intelligence DPSSSTATS online page.

2.1.2 Description of Change

1. Remove the Unengagement report's link and its information from the Business Intelligence DPSSSTATS online page.

2.1.3 Dashboard Page Location

Global: Reports

Local: Business Intelligence

Task: DPSSSTATS

Title: Unengagement

Note: This section change is for the Business Intelligence DPSSSTATS online page.

2.1.4 Counties Impacted

All CalSAWS counties will be impacted by the changes outlined in this section.

2.2 Turn off WPR Unengagement Batch Jobs

2.2.1 Overview

Since the dashboard is requesting to be turned off, the associated batch jobs processing the data will be turned off.

2.2.2 Description of Change

1. Turn off the following report batch jobs:
 - a) RDS_WPR_UNENGAGED_DALY_AGG
 - b) QLIK_EX_WPR_UNENGAGED_DALY_AGG
 - c) QLIK_TS_WPR_UNENGAGED_DALY_AGG_INCREMENTAL
 - d) QLIK.DB_UI_PROD_WPR_UNENGAGEMENT

2.2.3 Counties Impacted

All CalSAWS counties will be impacted by the changes outlined in this section.

2.3 Update WPR Homepage Dashboard

2.3.1 Overview

Any data or reference related to the Unengagement Dashboard will need to be removed from the WPR Homepage Dashboard. This section will remove the "Unengagement by Organization" widget and "People with Breaks in Activities" widget from the WPR Homepage Dashboard which uses Unengagement data.

2.3.2 WPR Homepage Dashboard Mockup

Current Screenshot:

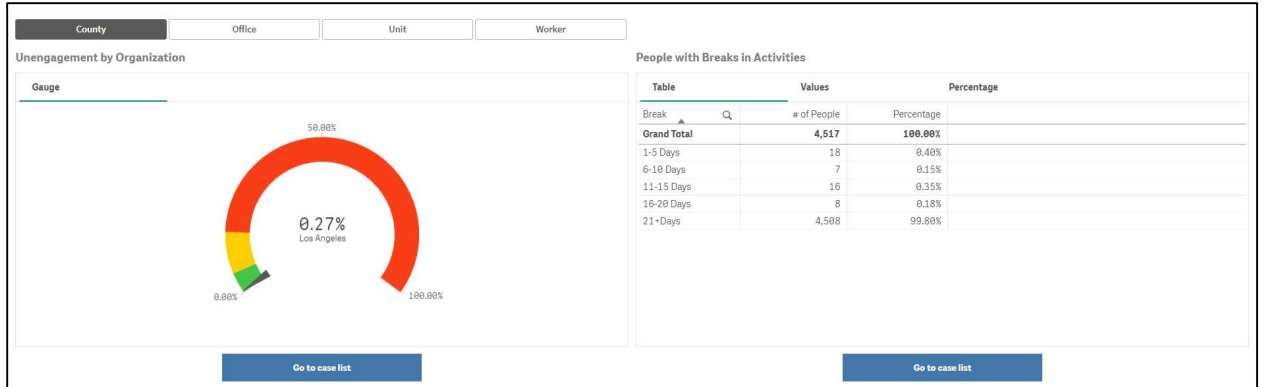


Figure 2.3.1- Current WPR Homepage Dashboard with the “Unengagement by Organization” widget and “People with Breaks in Activities” widget in the dashboard.

New Screenshot of what new Dashboard would look like:

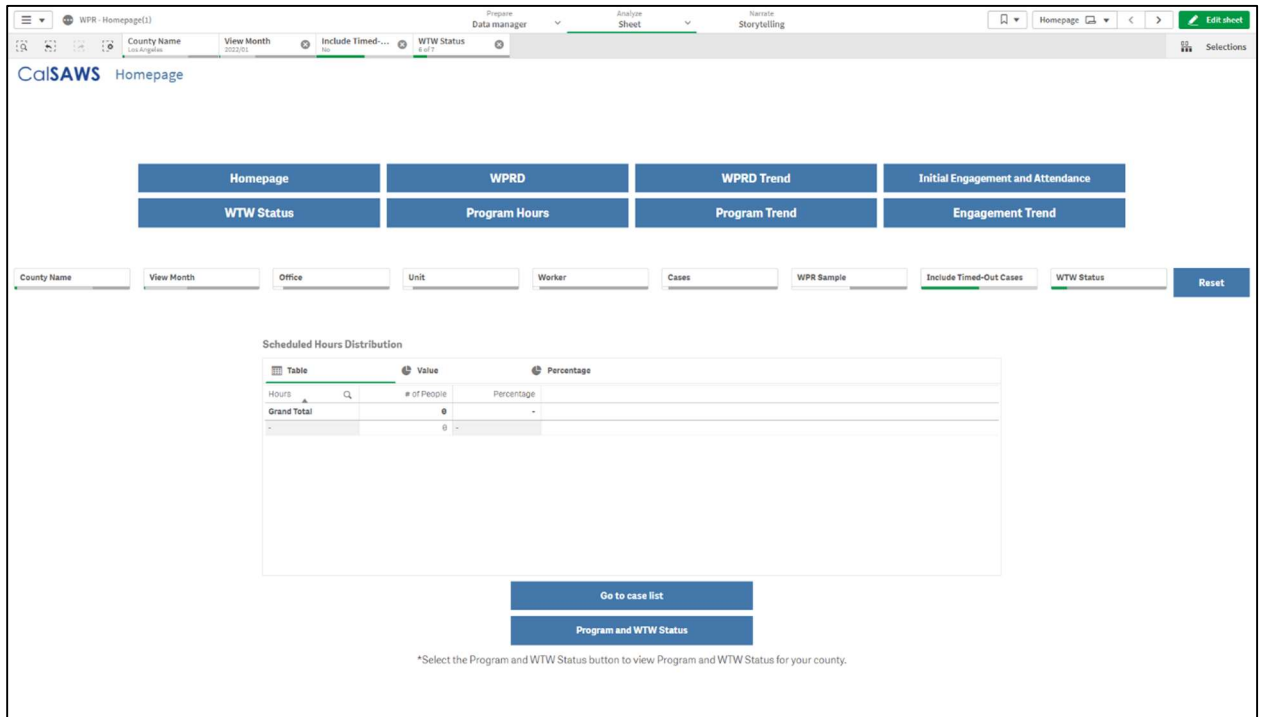


Figure 2.3.2- Mockup of the WPR Homepage Dashboard after the removal of the “Unengagement by Organization” widget and the “People with Breaks in Activities” widget.

2.3.3 Description of Change

1. Remove the “Unengagement by Organization” widget from the WPR Homepage Dashboard.
2. Remove the “People with Breaks in Activities” widget from the WPR Homepage Dashboard.

2.3.4 Dashboard Page Location

Global: Reports
Local: Business Intelligence
Task: DPSSTATS
Title: WPR Homepage
Category: WPR

2.3.5 Counties Impacted

All CalSAWS counties will be impacted by the changes outlined in this section.

2.4 Update WPR Engagement Trend Dashboard

2.4.1 Overview

Any data or reference related to the Unengagement Dashboard will need to be removed from the Engagement Trend Dashboard. This section will remove the “People with Break Trends” widget from the WPR Engagement Trend Dashboard which uses Unengagement data.

2.4.2 WPR Engagement Trend Dashboard Mockup

Current Screenshot:

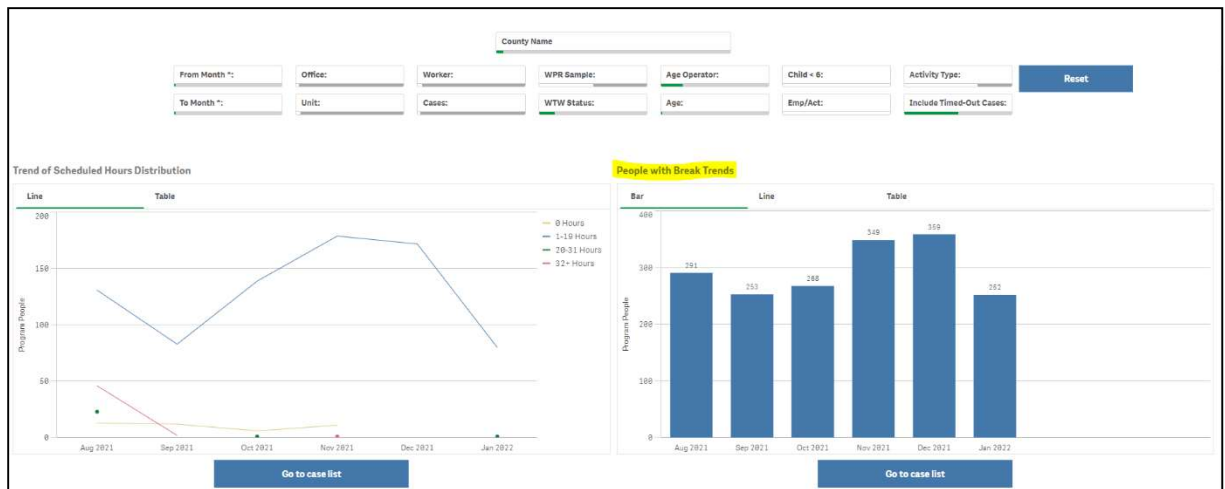


Figure 2.4.1- Current screenshot of the “WPR Engagement Trend” Dashboard with the “People with Break Trends” highlighted.

New Screenshot of what new Dashboard would look like:

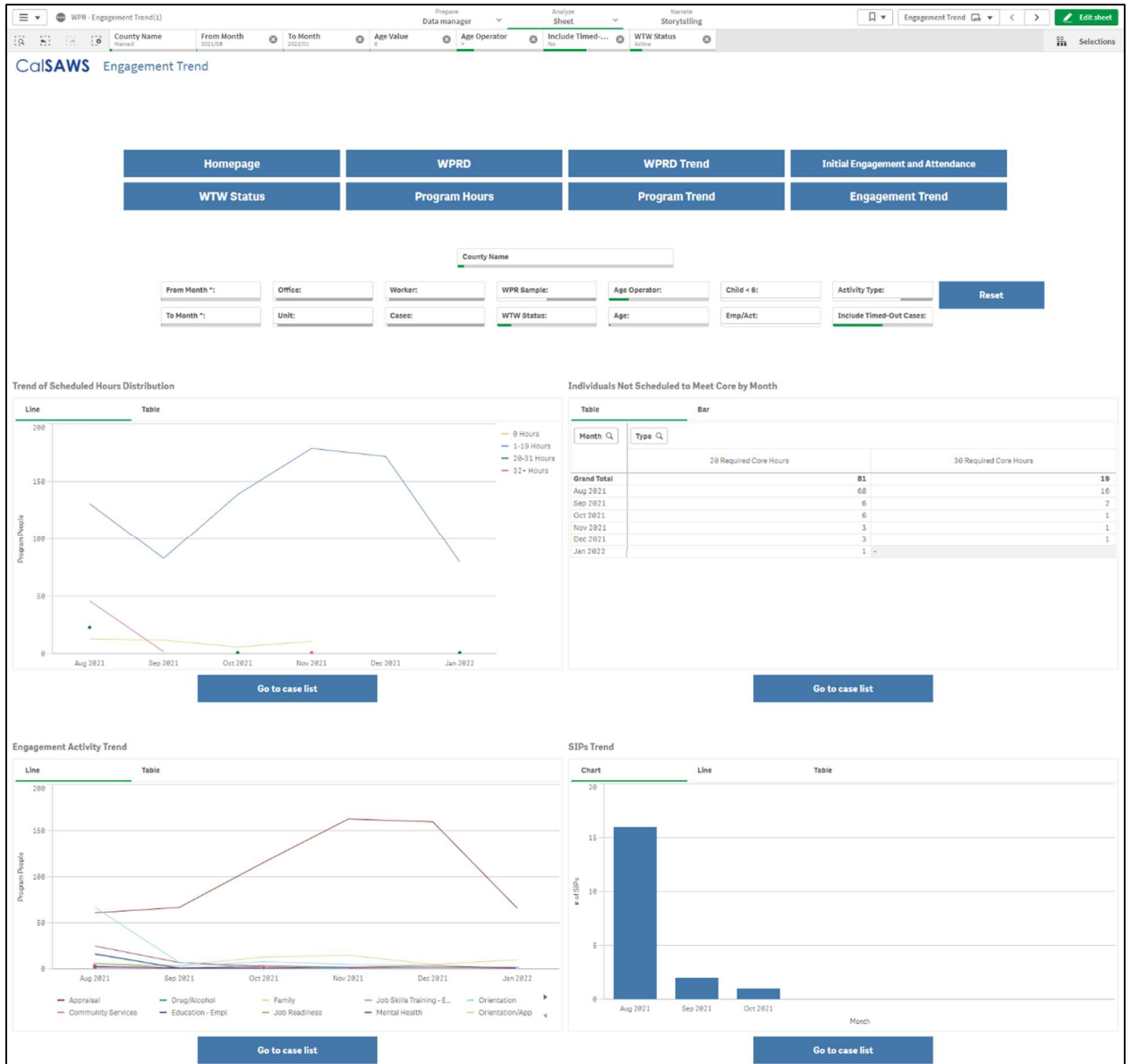


Figure 2.4.2- Mockup screenshot of the “WPR Engagement Trend” Dashboard after the removal of the “People with Break Trends” widget.

2.4.3 Description of Change

1. Remove the “People with Break Trends” widget from the WPR Engagement Trend dashboard and move other widgets up in position.

2.4.4 Dashboard Page Location

Global: Reports

Local: Business Intelligence

Task: DPSSTATS

Title: Engagement Trend

Category: WPR

2.4.5 Counties Impacted

All CalSAWS counties will be impacted by the changes outlined in this section.

2.5 Remove Unengagement Dashboard Button from All Other WPR Dashboards

2.5.1 Overview

The WPR dashboards all have button navigation at the top for the other WPR dashboards. Due to this, the “Unengagement” button will need to be removed from all of them.

2.5.2 WPR Dashboard Navigation Mockup

Current:



Figure 2.5.1- Current example of the navigation bar, which includes the “Unengagement” button link, boxed in red.

Mockup of Change:



Figure 2.5.1- Current example of the navigation bar, which does not include the “Unengagement” button link.

2.5.3 Description of Change

1. Remove the “Unengagement” button from the navigation bars on the other WPR dashboards, which are the following:
 - a. WPR Homepage
 - b. WPRD
 - c. WPRD Trend
 - d. WPRD Status
 - e. Engagement Trend
 - f. Initial Engagement and Attendance
 - g. Program Hours
 - h. Program Trend

2.5.4 Dashboard Page Location

This section impacts eight different dashboards:

Global: Reports
Local: Business Intelligence
Task: DPSSTATS
Category: WPR
Title: WPR Homepage

Global: Reports
Local: Business Intelligence
Task: DPSSTATS
Category: WPR
Title: Engagement Trend

Global: Reports
Local: Business Intelligence
Task: DPSSTATS
Category: WPR
Title: WPRD

Global: Reports
Local: Business Intelligence
Task: DPSSTATS
Category: WPR
Title: Initial Engagement and Attendance

Global: Reports
Local: Business Intelligence
Task: DPSSTATS
Category: WPR
Title: WPRD Trend

Global: Reports
Local: Business Intelligence
Task: DPSSTATS
Category: WPR
Title: Program Hours

Global: Reports
Local: Business Intelligence
Task: DPSSTATS
Category: WPR
Title: WPRD Status

Global: Reports
Local: Business Intelligence
Task: DPSSTATS
Category: WPR
Title: Program Trend

2.5.5 Counties Impacted

All CalSAWS counties will be impacted by the changes outlined in this section.

3 SUPPORTING DOCUMENTS

N/A

4 REQUIREMENTS

4.1 Project Requirements

REQ #	REQUIREMENT TEXT	How Requirement Met
2.24.1.11	The CalSAWS/LRS shall support all reports required by federal, State, and local laws, rules, regulations, ordinances, guidelines,	This SCR will continue to enable CalSAWS to provide reports that is data that is

	directives, policies, and procedures, including statistical, operational, workload, and fiscal reports.	required, and the removal of this dashboard will allow for improvement in the batch job performance of other reports that are more critical and regularly used.
--	---	---

4.2 Migration Requirements

N/A

5 MIGRATION IMPACTS

N/A

6 APPENDIX

N/A